



SEASON

35

SPARK



BLUEBARN THEATRE



via farina

**CAREFULLY CRAFTED
PASTA & PIZZA**



**LATE NIGHT HAPPY HOUR
AFTER THE SHOW**

GOVIAFARINA.COM (402) 502.9880

FOUR OUTSTANDING BALLET. ONE AMAZING EXPERIENCE!

momentum

AMERICAN
MIDWEST
Ballet

OCTOBER 14 & 15: HOFF FAMILY ARTS & CULTURE CENTER



Featuring
the premiere of
Erin Alarcón's
**FRAGILE
CREATURES**



OCTOBER 27 & 29

DON PASQUALE

Composed by Gaetano Donizetti
Libretto by Giovanni Ruffini

ORPHEUM THEATER

TICKETOMAHA.COM

Arthur & Friends
Make a Musical!

**LIFE DOESN'T
FRIGHTEN ME**

**night at the
FARM**
a bedtime party

**THREE
LITTLE BIRDS**



**Charlotte's
Web**

Imagine the POSSIBILITIES

Anything is possible at The Rose! This season at The Rose, we invite you to step into the spotlight alongside favorite characters with *Arthur & Friends Make a Musical* and *Rudolph the Red-Nosed Reindeer*. Be empowered with Maya Angelou's *Life Doesn't Frighten Me*. Meet farmyard friends in *Night at the Farm* and find a new groove *Three Little Birds*. Enjoy a silly twist on the classic *Red Riding Hood*, experience the wonder of friendship with *Charlotte's Web*, and discover what makes life sweet with *Charlie & the Chocolate Factory*.

Anything is possible as the curtain rises, the lights begin to twinkle and the story begins. It all begins this season at The Rose! **Imagine the possibilities!**

PLUS...Rose members get DISCOUNTED TICKETS to 2023-24 Premium Events:
Rudolph the Red-Nosed Reindeer and *Charlie & the Chocolate Factory*!



JOIN TODAY!

402-345-4849

www.rosetheater.org



CHANTICLEER UPCOMING 2023-2024 SEASON

TICKETS ON SALE NOW!



Auditions: Sep 17 & 19
Show Dates:
Dec 07-10 & 14-17, 2023



Auditions:
December 10 & 11, 2023
Show Dates:
Jan 11-14 & 18-21, 2024



Auditions:
January 14 & 15, 2024
Show Dates:
Mar 14-17 & 21-24, 2024



Auditions:
March 17 and 18, 2024
Show Dates:
May 09-12 & 16-19, 2024



402 671-0396 | www.FinesseOmaha.com



Finesse was born from the desire to provide quality, safe and conservative aesthetics treatments.

It takes years of experience, a discerning eye and a willingness to listen to what a client needs to feel and look their best.

Don't trust your face to just anyone.



Leanne Carlson, PA-C

**Specializing in Botox, Fillers, RF Microneedling,
and other Medical Grade Skin Care Needs**

Proud Supporter of the Blue Barn Theatre

When you're downtown...
Try the RICHEST Around!

Ted & Wally's

= ICE CREAM =

OLD MARKET 1120 Jackson St (402) 341-5827	BENSON 6023 Maple St (402) 551-4420
--	--

OMAHA NE - EST 1986



@tedandwallys

ADVENTURE AWAITS OFFSTAGE



SARO CIDER LOUNGE

Full Bar Live Music	Gluten-Free Appetizers	Local Draft Cider
------------------------	---------------------------	----------------------

SAROCIDER.COM

1012 S. 10th St.
Omaha, Nebraska

COME CELEBRATE!

BLUEBARN ANNIVERSARY BASH

SATURDAY - OCTOBER 14 - 2023

7:00pm - MIDNIGHT

FESTIVE FOOD FIERY LIBATIONS FANCY FOOTWORK



SPARKLE YOUR ATTIRE AS YOU DESIRE...

VALET PARKING

BASH Tickets \$135

402.345.1576 or QR Code



BLUEBARN Theatre is a tax
exempt 501(c)(3)
organization
Each ticket includes
benefits valued at \$35

1989 35 YEARS 2024

BLUEBARN SEASON 35 SPARK



MACBETH

BY WILLIAM SHAKESPEARE

SEPTEMBER 21 – OCTOBER 22, 2023

A VERY DIE HARD CHRISTMAS

BY JEFF SCHELL AND THE HABIT

NOVEMBER 24 – DECEMBER 17, 2023



THE GREAT LEAP

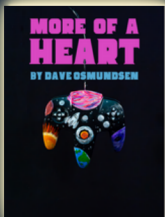
BY LAUREN YEE

FEBRUARY 1 – FEBRUARY 25, 2024

MORE OF A HEART

BY DAVE OSMUNDSEN

MARCH 28 – APRIL 21, 2024



POTUS:

OR BEHIND EVERY DUMBASS ARE SEVEN WOMEN
TRYING TO KEEP HIM ALIVE

BY SELINA FILLINGER

MAY 23 – JUNE 23, 2024

BLUEBARN.ORG
402-345-1576

1106 S. 10TH ST, OMAHA NE



SCAN ME

WELCOME FROM THE BOARD PRESIDENT



Greetings BLUEBARNers, and welcome to **SEASON 35!**

35 years - a tremendous reason to celebrate and to look back over a legacy of intimate and engaging productions. From standards such as "Waiting for Godot" and "Frost/Nixon," to new works like "Red Summer" and even "Little Nellie's Naughty Noel," the works that the BLUEBARN carefully curates always live within our Missional lane to provoke thought, emotion, action, and change and then come alive on the stage with a clear BLUEBARN fingerprint.

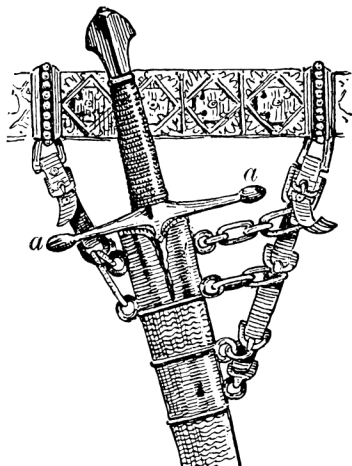
I encourage everyone to hop on the BLUEBARN website some time to review the production history dating back to 1989. Those of us who have been along for the ride for many of these years will experience fond and thrilling memories, and those that are new attendees can get a glimpse into a theatrical legacy that will live on and continue to thrive certainly for another 35 years and beyond.

I look forward to seeing you all at this and the remaining season productions, and hopefully at the BLUEBARN Bash on October 14th!

Sincerely,

A handwritten signature in black ink that reads "Devin Fox".

Devin Fox, Board President





BLUEBARN THEATRE
PRESENTS



SEPTEMBER 21
- OCTOBER 22

Directed by Beth Ann Hopkins

Powerful ambitions. Crippling guilt. Brutal consequences. William Shakespeare's dark and bloody tragedy is as relevant today as it was 400 years ago. In this World Premiere adaptation by Beth Ann Hopkins, with original music by Elliot Roth, ambition corrupts a noble mind. Macbeth will betray and destroy all he holds dear.

***This performance runs approximately 2 hours
with one intermission.***

Please silence all cell phones, smart watches, and other noise-making devices.

BLUEBARN season artwork design by Jimmy Nguyen
"Macbeth" artwork design by Michelle Zacharia

SHOW SPONSORS

Bruce Reneaud & Kerry Dobson

**James and Susan Tracy
Charitable Foundation**

Ruth H. Keene



BIG MUDDY Workshop

Master Planning | Landscape Architecture | Green Infrastructure

35TH SEASON SPONSORS

HOLLAND
foundation

**Fred & Eve Simon
Charitable Foundation**

**THE SHUBERT
FOUNDATION**

**Anonymous
Foundation**

Mammel Foundation

Amy Haddad & Steve Martin

Giger Foundation

**94.5
BOOMER!**

valmont 

MAVENSOCIAL

Fashion Cleaners
■ PASSION ■ SERVICE ■ INNOVATION ■



**Would you or your company like to sponsor a BLUEBARN
production? Contact Heather at 402.345.1576 x6 or
hhoyt@bluebarn.org.**

PLAY SYNOPSIS

Written by Beth Ann Hopkins, director of MACBETH

Amid thunder and lightning, three weird sisters/witches decide that their next meeting will be with Scottish General Macbeth. As the war concludes, Queen Duncan receives reports from the front that not only have they won, but Generals Macduff and Banquo should be praised for their bravery and fighting prowess. As Macbeth and Banquo travel home, they are approached by the sisters and told that Macbeth will be given two additional titles; Thane of Cawdor and King of Scotland. They also predict that his comrade Banquo will be the father of future kings. The sister's prophecies begin to come true as Macbeth soon receives the title of Thane of Cawdor from Duncan. Upon returning home (and encouraged and assisted by his wife), Macbeth murders Duncan and blames the Queen's guards. Soon thereafter, Macbeth is named king.

Out of paranoia, and unbeknownst to Lady Macbeth, Macbeth hires two men to follow and kill Banquo and Fleance, his child. While Banquo's murder is successful, his child Fleance escapes with her life. Later that night, Banquo's ghost haunts Macbeth's dinner party, seen only by Macbeth. Macbeth is visibly upset and scolds the vision. Now all who are present suspect Macbeth's person as more and more rumors are spread throughout Scotland that Macbeth is mad and becoming a tyrant.

Macbeth begins to build an army so as to retain his control and calls on Macduff, the Thane of Fife to join him. When Macduff refuses, Macbeth sends two henchmen to kill Macduff's entire family while Macduff seeks out and joins forces with Duncan's eldest son Malcolm. Macbeth revisits the weird sisters and demands to be given more information about his future.

Civil war erupts to overthrow Macbeth who has fallen further into madness driven by guilt, lack of sleep, and his ever-tightening grip on this kingdom. As Malcolm leads the army forward, all the weird sisters' predictions come true as Macduff arrives at the final battle with nothing to lose.

"MACBETH" ENGAGEMENT PROGRAMMING

Engagement events are free and open to the public
unless otherwise noted



for full information and the link
to purchase tickets, scan this!



Community Collaboration Screening of Throne of Blood in Partnership with Film Streams

Tuesday, September 26th | 6:00 pm – 9:00 pm

Location: Ruth Sokolof Theater | 1340 Mike Fahey St. Omaha, NE

Tickets purchased through Film Streams

\$7 Film Streams Member | \$9 Special | \$12 General Admission

Returning to their lord's castle, samurai warriors Washizu and Miki are waylaid by a spirit who predicts their futures. When the first part of the spirit's prophecy comes true, Washizu's scheming wife, Asaji presses him to speed up the rest of the spirit's prophecy by murdering his lord and usurping his place. Director Akira Kurosawa's resetting of William Shakespeare's Macbeth in feudal Japan is one of his most acclaimed films.

Please join us for a screening of Throne of Blood followed by a post-screening panel discussion with Film Streams and BLUEBARN Theater.



Thanes of Fire

Post-Show BLUEBARN Porchyard Bonfire

in partnership with

Nebraska Poetry Society and the
Nebraska Writers Collective

Saturday, September 30th | Following the 7:30 pm show



Join us for a very special evening in partnership with the Nebraska Poetry Society and the Nebraska Writers Collective as they present four original pieces in response to the themes of Macbeth!

Omni Webster, Kazmere Nicholson, Shyla Shehan, and Hannah Johnson

For full Engagement Info visit bluebarn.org/engagement



Saro Cider / BLUEBARN Theatre
presents...

Shakespeare Trivia Night: To Trivia or Not to Trivia?

Wednesday, October 4th | 7:00 pm – 9:00 pm

Location: Saro Cider | 1012 S 10th St, Omaha, NE 68108

Hark! Lend thy ears and open thy hearts, for a night of merry-making awaits at our Shakespeare Trivia Night! "All the world's a stage," and on this night our stage (bar) shall be filled with laughter and camaraderie, as we engage in friendly rivalry. From Star-cross lovers to mischievous fairies, we shall venture through the realm of the Bard's timeless tales. Gather your wittiest comrades for the 'game is afoot', and only the sharpest minds shall emerge victorious. So 'come what come may,' 'speak what we feel, not what we ought to say', and embark on a night of merriment!

(groups of 4 individuals per team)

*1st Place team: 2 single tickets for Macbeth & 1 \$50 gift card to SARO Cider

2nd Place team: Surprise Prize



"From Spark to Stage"

in conversation with Beth Ann Hopkins and Jill Anderson

Friday, October 20th | Following the 7:30 pm show

Join our Director, Beth Ann Hopkins, and Costume Designer, Jill Anderson, for an inside glimpse into the creative process and the visual inspiration that brought Macbeth to life!



**"ENTANGLED"
Macbeth Art Exhibition**

Art in the Blue | BLUEBARN Mammel Lobby | Curated by Jared Spence

ARTISTS

**Joe Addison | Shawnequa Linder | David Manzanares |
Adam Roberts | Mark Sabaliauskas | Jared Spence | Weston Thomson**

Entangled draws its inspiration from Shakespeare's tragic masterpiece, Macbeth. This captivating exhibition delves deep into the intricately dark realms of a tormented psyche, entwined by overwhelming guilt and paranoia. Through its art, Entangled explores the exquisitely brutal essence of a mind ensnared in its own web of emotions and consequences.

**Opening Reception of "Entangled"
Sunday, September 24th, 3:00 pm - 6:00 pm**

Join us for a pre-show Q&A led by Jared Spence and featured artists who offer a wealth of united and varied experiences through their work.

**Sun, Oct 1st w/ David Manzanares | 1:30 pm, before the 2:00 pm show
Sat, Oct 7th w/ Mark Sabaliauskas | 7:00 pm, before the 7:30 pm show**

The "Entangled" exhibit is on display to the public
45 minutes prior to show, M-F during Box Office Hours, 10 am-4 pm.

All art proceeds will go directly to the participating local artists

For full Engagement Info visit bluebarn.org/engagement

LAND ACKNOWLEDGEMENT

The BLUEBARN Theatre stands in honor of the first inhabitants and our ancestors. We acknowledge the land on which The BLUEBARN stands — the unceded territory of the Umonhon ("um AHhah") and ochethi Sakoiwic, We acknowledge the painful history of genocide and forced removal from this territory. We honor the generations of stewards, and we pay our respects to the many diverse Indigenous peoples still connected to this land

Visit native-land.ca to discover the native land on which you reside or currently find yourself.

ANTI-RACISM | ANTI-OPPRESSION ETHOS

BLUEBARN Theatre owns that systemic racism is real, always at play, and intersects with multiple systems of oppression and that all must be fought against wherever and however they show up - in our community, in our theater, in ourselves.

ANTI-HARASSMENT & INCLUSION

BLUEBARN Theatre is committed to fostering a culture of civility, dignity, and respect as a right and responsibility of all who walk through its doors. Employees, guest artists, volunteers, and patrons are entitled to and responsible for maintaining an environment of mutual trust - free from intimidation, exploitation, harassment, and discrimination. Offensive, abusive, or unwelcome verbal or physical conduct will not be tolerated. Adhering to this standard is vital to the BLUEBARN's mission.

DIVERSE AUDIENCE PRACTICES PRINCIPLE

Hospitality has always been one of the BLUEBARN's core values. Welcoming you to this space is our great joy. You are invited to bring your full self to the experience. Audible reactions and responses are absolutely welcome. For some people, this is church, for some a meditative space, for others an escape, and we invite you to respect the ways that others engage in the experience based on their individual or cultural practices. By gathering at the BLUEBARN, you have committed to a shared experience in community with others, free from etiquette shaming, microaggressions, and entitled behavior.



ACCESS

BLUEBARN Theatre is committed to ensuring that our boundary-breaking theatre is accessible to everyone. We are committed to easing cost barriers for young professionals and students. We are committed to providing low-cost, last-minute opportunities for anyone to see a show. We are committed to recognizing those who give the most in service to our community.

BLUCrew - Young Patron Development Program

Anyone 35 or under is eligible. Members receive rush pricing for most Sunday and Thursday shows throughout the season with no upfront cost. Contact Sydney at sreadman@bluebarn.org to join BLUCrew.



Rush Tickets

Every unsold seat. Every show. \$20. Available only at the box office, 45 minutes before curtain. If we're not sold out, you have a new way in.



Nebraska Educators, Healthcare Workers, and Military Personnel

\$4 off all tickets. All the time.



Radical Hospitality

Sometimes you need a break. It doesn't matter why. For pay-what-you-wish tickets to any show, contact Sydney at sreadman@bluebarn.org.



Assisted Listening Devices

These are available at the box office for mainstage productions. BLUEBARN also utilizes Listen Everywhere, a smartphone application that allows you to stream audio directly to your own headphones and Bluetooth-compatible hearing aids. See our box office staff for assistance or scan the QR code provided.



An **American Sign Language** interpreted performance is offered for Macbeth on **Friday, Sept. 29**, generously supported by the Nebraska Arts Council.

An **Audio Description Service** is provided through Outlook Nebraska upon request. Audio-described performances fall on the 3rd Thursday of each run when requested.

Sensory Kits are available at the box office and the lobby is always available as a respite from the performance environment. Sensory Kits provided by **Autism Action Partnership**.

To request these or additional accommodations, or for more information, Please call **(402) 345-1576** or email Sydney at sreadman@bluebarn.org.

CAST

Macbeth.....	Ryan Kathman
Lady Macbeth.....	Jill Anderson
Banquo.....	Jimmy Nguyen
Daughter/2nd Apparition.....	Maggie Conway
Duncan/Porter/Hecate.....	Moira Mangiameli
Malcolm/2nd Murderer.....	Christian Negrón
Lennox.....	Shane Staiger
Ross.....	Brandon Williams
Macduff.....	George Dippold
Weird Sister/Lady Macduff.....	Alissa Hanish
Weird Sister.....	Zoella Sneed
Weird Sister.....	Lilly Weak

PRODUCTION CREATIVES

Director.....	Beth Ann Hopkins
Composer/Music Director.....	Elliot Roth
Assistant Director.....	Isa Gott
Fight Choreography.....	Kevin Barratt/Murphy Scott Wulfgar
Table Work.....	Jonathan Michael Hopkins
Stage Manager.....	Madelyn Hubbard
Scenic Designer.....	Martin Marchitto
Production Manager & Props Design.....	Amy Reiner
Lighting Design.....	Maya Pacana-Bredenkamp
Costume Design.....	Jill Anderson
Asst. Costume Designer/Draper.....	Katherine Neary
Leathersmith/Fabricator.....	Steve Morrison
Costume Coordinator.....	Kerri Drake
Creation of Lady Macbeth's rope robe.....	René Johnson Harper
Braiding/Hair Design.....	Jonathan Hickerson
Makeup Design.....	Abz Cameron
Scenic Artist.....	Craig Lee
Sound Board Operator.....	Mindy Cotner
Master Carpenter.....	Shane Staiger
Master Electrician.....	Sally Grosenbach
Art Curator, Mammel Lobby.....	Jared Spence



BLUEBARN Theatre is an Associate Member of the **National New Play Network**.

NNPN is an alliance of professional theatres across the country who are evolving and exploring the frontiers of the American theatre. **BLUEBARN** has long been Omaha's home for professional contemporary theatre, bringing diverse perspectives, new voices, and provocative work to our community. The **National New Play Network** has become the most powerful, growing force in new play development, production, and promotion in the nation.

BLUEBARN is committed to seeking out collaborative relationships with other NNPN member theatres, producing and supporting the work of the most dynamic emerging voices in contemporary playwrighting, and promoting local artists on a platform with national reach.

To support New Play Development at the **BLUEBARN**, contact Susan at sclement@bluebarn.org. To learn more about **NNPN** and its programs, visit NNPN.org.

CAST BIOS



Jill Anderson - Lady Macbeth & Costume Designer

Jill Anderson, an Omaha native, has had a long career in the arts working primarily as a singer, actor, director and educator. Her performance career has spanned the United States with theatre and concert appearances in venues as varied as the Library of Congress in Washington DC to an abandoned train station in Omaha, Nebraska. Besides professional theatre, concert and cabaret work, Jill has acted as Artistic Director for the Joslyn Castle Literary Festival, recorded four CDs of Irish folk music, and created theatre projects for people with developmental disabilities. Jill has had the pleasure of performing the role of Mrs. Lovett in Sweeney Todd at Barter Theatre in Virginia and at Lawrence Arts Center in Kansas.



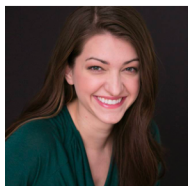
Maggie Conway - she/her - Daughter/2nd Apparition

Maggie Conway is a 6th grader at Loveland Elementary School. She has performed in school productions as Miss Hannigan in Annie and Chip in Beauty and the Beast. This is her first professional production and she is excited to be joining the BLUEBARN Theatre. Maggie has enjoyed several theater camps with Nebraska Shakespeare, The Rose, and Little Warrior Theatre Camp as well as private acting lessons. She plays piano and enjoys art.



George Dippold - he/him - Macduff

George Dippold is thrilled to work with BLUEBARN for the first time. Originally from Virginia, and a James Madison University alum, he served as a Resident Actor with Charleston Stage, toured nationally for three years with Virginia Repertory Theatre, and performed for three summers in the Scioto Society's outdoor historical drama and Shakespeare seasons. Onstage credits: Alonso, The Tempest & Sir Toby, Twelfth Night (Old School Shakespeare Omaha); FBI Agent, Without A Formal Declaration of War & Cord Brechman & Others, Dharma (Great Plains Theatre Commons); 2nd Headmaster & A Very Tall Man, Puffs... (Creighton University); Krampus, Christmas Spirit (Brigit St. Brigit Theater); Harridan, The Witches Project (Firehouse Theatre); Chris, All My Sons (Swift Creek Mill Theatre). Film: Captain Spectacular, People Don't Die in the Comics Anymore. Much love and gratitude to his near and far family--and especially his partner, Addie; pup, Finn; cats, Ginsburg & Boiyanka; and chickens, Hennifer, Olivia, Hendela & Hennedy. @geedipp on Instagram



Alissa Hanish - she/her - Weird Sister/Lady Macduff

Alissa Hanish (She/Her) is over the moon to be back at the BLUEBARN after last appearing as Ami in Before After as part of their 2021 Bonfire Series. Some of her favorite Omaha credits include Viola in Shakespeare in Love and Nina in Stupid F*cking Bird, both at the Omaha Community Playhouse. By day, Alissa is a Preschool Resource Teacher with Westside Community Schools and the Lead Teaching Artist for Disney Musicals in Schools with Omaha Performing Arts. She holds a BFA in Acting from The Theatre School at DePaul University in Chicago. In her free time, Alissa likes to go on adventures with her husband and twin girls, read fantasy novels, and prepare year-round for Halloween.



Ryan Kathman - he/him - Macbeth

Ryan Kathman is an actor, director, fight director, playwright and educator who has worked on stage and screen, primarily in Nebraska, Tennessee, Minnesota and Kansas. After the privilege of playing Kent in the BLUEBARN's production of King Lear last year, he is beyond grateful for this singular opportunity. Other favorite Shakespeare roles include Romeo, Malvolio, Antipholus of Syracuse, Edgar, half of the roles in Twelfth Night in his recent two-person adaptation (titled What Two Will) and all of the roles in his solo Hamlet adaptation, One-Ham Manlet. He is a member of the Stage Directors & Choreographers Society, the Society of American Fight Directors, and a former member of the Actors Equity Association. Ryan is an assistant professor of Acting/Directing at Nebraska Wesleyan University in Lincoln, where he lives with his "noble partner" Jenny, and the "undaunted mettle" of Gracie and George. Thank you for supporting live theatre! www.onehammanlet.com



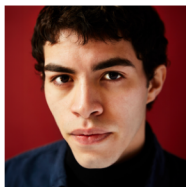
Moira Mangiameli - she/her - Duncan/Porter/Hecate

Moira is thrilled to be back at the BLUEBARN again, with the additional bonus of working on her beloved Shakespeare with friends and family. Moira has been an active member of the Omaha theatre scene for over 35 years as a performer, director and educator. Most recently she directed Ryan Kathman and Delaney Jackson in Ryan's 2-person adaptation of Twelfth Night at Benson Theatre. Her Blue Barn credits include Escaped Alone, The Woodsman, Our Town and The Goat. Moira works at Ollie Webb, Inc. Her biggest accomplishments are her 3 sons and 2 grandchildren. She'd like to thank Mark, her husband of 38 years for, well... everything.



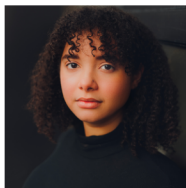
Jimmy Nguyen - he/him - Banquo

Jimmy is a Vietnamese-American actor and has worked at various theatre institutions across the country including The Kennedy Center in D.C., Hope Repertory Theatre in MI, Illinois Shakespeare Festival, and a world premiere of a new Asian-American musical called *Gold Mountain* at the Utah Shakespeare Festival. Recently, he took over the roles as the immediate replacement for Demetrius in *A Midsummer's Night Dream* and Benvolio in *Romeo & Juliet* during the last month of performances at the Utah Shakespeare Festival in August 2023. His identity as an Asian-American guides his practice and how he approaches his craft. As a kid, he saw Asian-Americans in the media repeatedly portrayed as bullied nerds, gas station clerks, laundromat workers, cab drivers, etc. He decided he wanted to change that narrative. Through his work, he continues to challenge what it means to be an Asian-American actor. jimmynguyenactor.com



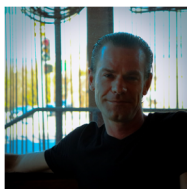
Christian Negrón - he/they - Malcolm/2nd Murderer

Christian Negrón is excited to be making his BLUEBARN debut! He is an actor, writer, Haim enthusiast, and a lifelong New Yorker. He studied at NYU's Tisch School of the Arts and the Stella Adler Studio of Acting. He was last seen in Omaha last summer with Nebraska Shakespeare as Ariel in *The Tempest* and in *Othello*. His stage credits in New York include: the premiere production of *Erastes* (Fresh Fruit Festival at The Wild Project), *Measure For Measure* (Smith Street Stage), and *Killing The Baby Seals* (Interrobang Festival at The Brick). He would like to thank his family and friends for their continued love and support. [@chrisanegrón](https://www.instagram.com/chrisanegrón)



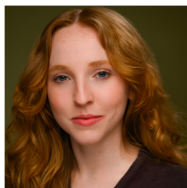
Zoella Sneed - she/her - Weird Sister

Zoella Sneed received her dual B.A in Theatre Performance & Theatre for Youth and Communities from the University of Northern Iowa. Since her recent move to Omaha in 2021, she has been featured in roles such as "Ella" in *Cinderella* and "Elephant" in the World Premiere of *Giraffes Can't Dance: The Musical* with The Rose Theater, as well as various projects with Great Plains Theatre Commons and The Union for Contemporary Art. When she isn't onstage as an actor herself, she's in a classroom introducing the joy and magic of theatre to the young artists of Omaha. Zoellasneed.wixsite.com/theatre



Shane Staiger - Lennox

Shane has been acting on stage since he was 10. His most recent appearance on stage was as Tadhg McCabe in *The Field* by John B. Keane at the Brigit Saint Brigit Theater. He has performed at the Omaha Community Playhouse, BLT, Circle, and Shelterbelt/SNAP theatres. His other BLUEBARN credits include: *King Lear*, *Talk Radio*, *Silent Night of the Lambs*, *Who Killed Santa*, *Edward II*, *Vieux Carre*, *Cruelties*, *Poseidon an Upsidedown Musical*, and *Toxic Avenger the Musical*. He has also done radio/TV ads, print work (modeling), and has appeared in a few smaller film projects. He has a BSAD from Metropolitan Community College in Accounting. Shane is honored to have you here tonight to see this production and to have the privilege of working with such an amazing collection of talented artists and actors. He hopes you enjoy the show!



Lilly Weak - she/her - Weird Sister

Lilly Weak is an Omaha native who recently received her B.F.A in Drama from New York University with double minors in Entertainment Business and Producing. While in New York, she participated in multiple seasons of student-produced play festivals, made her Off-Off-Broadway debut at The Tank Theater in "Pink Morph Suits" and toured as Iris in "The Up Above" through New York City Public Schools. During Lilly's Junior year, she was selected to attend the International Theatre Workshop in Amsterdam, NL, where she was exposed to groundbreaking new devising techniques and lifelong mentorships. Lilly is currently in postproduction on a short film she wrote and directed in partnership with Lighthouse Ladies Productions, a female-led producing collective whom she is proud to call her friends. She sends her love to her family and friends who have helped support her in her performing career. @mybravado



Brandon Williams - he/him - Ross

Brandon Williams was previously on stage here at BLUEBARN in *The Legend of Sleepy Hollow*. He previously taught physical education for two years at Nelson Mandela Elementary School. He's been a golf instructor for 13 years, working with kids as young as 6 to 17 years old. He's been involved with several productions, notably at the Omaha Community Playhouse: *Stick Fly*, *A Raisin in the Sun*, *Sweat*, and was recently in *Fences* at OCP. His goal is to make a career in film. 'It always seems impossible until it's done.' – Nelson Mandela

CREATIVE BIOS



Beth Ann Hopkins - she/her - Director

Beth Ann Hopkins is the co-founder of Smith Street Stage (SSS), a Brooklyn based theater company that specializes in Shakespeare's work. At SSS she has produced, directed and acted in shows since its inception in 2010. She created and directed adaptations of King Lear, A Christmas Carol, An Enemy of the People, and Measure for Measure with SSS. She also directed The Tempest for their award-winning Shakespeare in Carroll Park series. Outside of SSS, Beth Ann has directed for the Stella Adler Studio of Acting/NYU & Day Conservatory. While this will be Beth Ann's Director debut at BLUEBARN, this is not her first time working in Omaha. She performed last summer in Nebraska Shakespeare's farewell performance of The Tempest, playing the role of Caliban. Next up, her company, Smith Street Stage, will be premiering a documentary film project entitled Hamlet Rehearsed in December of 2023. www.BethAnnHopkins.com



Isa Gott - she/they - Assistant Director

Isa Gott is a talented singer, actress, dancer, and performing artist and is thrilled to be making her assistant direction debut at the BLUEBARN! Isa is a third-year vocal performance music major and theater minor. Recent productions include Mimi Marquez in Rent (Omaha Community Playhouse) Cinderella in Into the Woods (UNO Theater), and Fernanda in Perdido en mi Cabeza (BLUEBARN). Isa would like to thank her production team, friends, and most importantly her family for their constant support and love.



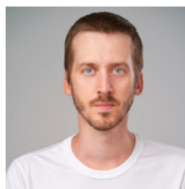
Elliot Roth he-him - Composer/Music Director

Elliot Roth is a NYC based singer/pianist/actor, composer and instructor. Hailed by the New York Times for his "silky smooth voice". Broadway, "Our Sinatra*", Off-Broadway "A Christmas Carol" (Smith Street Stage). He is thrilled to have worked with Beth Ann Hopkins via Smith Street Stage as composer/music director for other past productions in NYC. He has appeared in Downbeat Magazine as one of the NYC's "Top 20 Performers to Watch" and has headlined at such legendary venues as The Apollo Theater (NYC), The Lyric (Los Angeles) and David Geffen Hall/Lincoln Center. He currently serves on the voice faculty at Marymount Manhattan College's Theatre Arts Department and is the musical director of summer intensives at Two River Theater in Red Bank, NJ.



Kevin Barratt - Fight Choreographer

Over the last thirty years, Kevin has worked extensively in the area as an actor, director, and fight choreographer. His most recent stage appearance was Dance Teacher Pat in BLUEBARN's *Dance Nation*. He also played Thady "Bull" McCabe in the Brigit St. Brigit production of *The Field*. He has appeared in previous BLUEBARN productions as Scrooge in Jacob Marley's Christmas Carol and Jerry Goss in *Bug*. He has acted in most local venues including the Omaha Community Playhouse, SNAP, The Rose Theatre, and the Circle Theatre. He has staged fights at the OCP, Opera Omaha, BLUEBARN, Rose Theatre and many other college and high school productions. He is a master artist with the Nebraska Arts Council's Artists-In-Schools Program and a retired Omaha Public Schools educator.



Jonathan Michael Hopkins - he/him - Table Work

Jonathan Michael Hopkins is an actor and director who lives in Brooklyn, New York who is thrilled to be working at BLUEBARN for the first time. He is the co-founder and Artistic Director of the award winning theater company Smith Street Stage, an actor led company that focuses on finding modern relevance in Shakespeare's plays. Jonathan has acted Off-Broadway for Project: Theater, the Pearl, SoHo Rep and Smith Street Stage, regionally in Virginia, New York, New Jersey and Tennessee. He was faculty at the Stella Adler Studio of Acting for ten years, and has an MA with Distinction in Shakespeare & Theater from the Shakespeare Institute in Stratford-upon-Avon.

<https://jonathanmhopkins.com>



Martin Marchitto - he/him - Scenic Designer

Martin Scott Marchitto is excited to be returning to the BLUEBARN for its 35th season! His previous set designs include: *Reefer Madness*, *In the Next Room*, or the *Vibrator Play*, *Hir* and many more! Martin is an award-winning designer whose notable credits include; *Off Broadway Mack the Knife*, *The Life and Times of Bobby Darrin*: The Theatre at Saint Peters, *Lightnin Out*: The Judith Anderson. Regional credits include *Sweeney Todd*: Opera Omaha, Associate Designer for *Big River* and *The Foreigner*: Utah Shakespeare Festival, *My Three Angels*, Broadway, *The Last of the Red Hot Lovers*: Studio Summer Theatre, *Riggaletto*, *The Tenderland*: Opera North, *Elixir of Love*: Illinois Opera, *Shooting Stars*, *The Pirates of Penzance*: Illinois Repertory Theatre. He is a regular set designer for the Ivoryton Playhouse and Curtain Call Theatre in CT.





Maya Pacana-Bredenkamp - Lighting Designer

Maya returned to her native Omaha in 2012. She received a Bachelor of Fine Arts in Technical Theatre from the University of Nebraska-Kearney, an internship as an Assistant Lighting Designer at American Repertory Theater at Harvard University, and Masters of Fine Arts in Theatrical Design from Northwestern University. Her career began at Walt Disney World-Epcot as a lighting designer, and an Event Technical Specialist for Walt Disney Entertainment. Next, she was a Systems Project Manager for Barbizon Lighting in Orlando and Chicago. She joined Schuler Shook Theater Consultants as a Theater Specialist, working on new and renovated performance spaces. Maya designed for several Chicago Storefront theater companies. Maya is very excited to return after making her debut at the Bluebarn in November. She would like to thank her family for their support!

Katherine Neary - Asst. Costume Designer/Draper

Katherine grew up underneath her mother's sewing table, found herself working at the costume shop in college at Lawrence University, and has continued to enjoy her time around clothing and theater ever since. She managed Ralston Costume, was shop foreman at the Rose, and ran the Hot Tail Honeys Burlesque troupe. She has been both on stage and behind the scenes at the BLUEBARN since 1998.

Madelyn Hubbard - she/her - Stage Manager

Madelyn is an arts manager and theatre professional in Omaha, Nebraska, where she was born and raised. Madelyn truly loves the arts. Being a part of the process from the first design meeting to taking down the last piece at strike is what drives her every day to become a better professional. @ilmisshubbard

Craig Lee - he/him - Scenic Artist

Mr. Lee has lived in the Midtown area of Omaha since 1985. His work has appeared on virtually every local live theatre stage since then, as well as in movies, television, and publications. He has worked with the finest designers in the area on countless shows and has painted indoor and outdoor murals all over Omaha. At his studio he has completed commissioned paintings, drawings, and production designs. He has taught scenic painting and worked with students on many university productions. He has proudly supported and collaborated with BLUEBARN Theatre for much of its existence and is extremely fortunate to call the talented, passionate professionals who work here some of his very best friends.

Mindy Cotner - Sound Board Operator

Mindy has been involved in Omaha-area theater since age 11, first appearing onstage as Lullaby League #2 in a production of *The Wizard of Oz*. After earning a B.F.A from the University of Nebraska Omaha Writer's Workshop, she came to roost in technical theater and discovered the joys of working on the "dark side." Favorite productions in her 18 seasons with BLUEBARN include *The 39 Steps*, *Spring Awakening*, and *Every Brilliant Thing*. She has also worked on several productions with the Ollie Webb Center's Art of Imagination, appearing onstage as the Banshee and Selkie Queen in *Fear Liath*, and running follow spot for *The White Gander* and *Morozko*.

RESIDENT CREATIVE BIOS

Susan Clement - She/Her - Producing Artistic Director

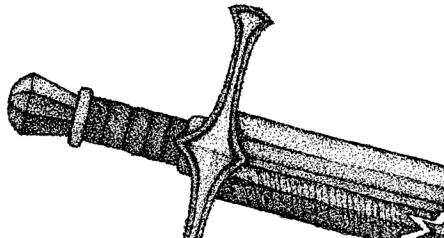
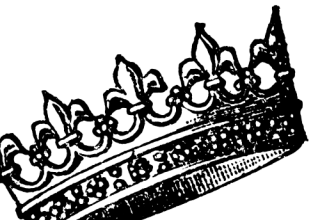
Susan has served as BLUEBARN's Producing Artistic Director since 2002. She has directed numerous productions at the BLUEBARN, beginning with *The Night Larry Kramer Kissed Me* in 1993. OEAA Awards – Best Director: *Red Summer* (2020), *Indecent* (2019) *The Resistible Rise of Arturo Ui* (2018), *Our Town* (2015), *39 Steps* (2013), *Spring Awakening* (2012), *Seascape* (2008); Best Play - *Our Town* (2015), *Red* (2013), *The Pillowman* (2006). As director of the BLUEBARN, Susan alongside Shannon Walenta (Managing Director at the time) spearheaded the capital campaign that enabled the BLUEBARN to build its own stand-alone theater, and saw the dream fulfilled when BLUEBARN moved into its new home at 10th and Pacific in 2015. Susan holds a B.F.A in Theatre/Film from the State University of New York at Purchase Conservatory.

Amy Reiner - She/Her - Director of Production & Props Designer

Amy joined the BLUEBARN in 2012 as Production Manager and Properties Master. Amy went to college at the University of Nebraska-Lincoln where she received a B.F.A in technical theatre with an emphasis on Scenic and Lighting Design. After leaving Lincoln, she spent three years freelancing in Los Angeles in the fields of film and television. Returning to her hometown of Omaha in 2000, she worked as Properties Master for 12 years at The Omaha Community Playhouse where some of her favorite shows were *Violet*, *The Battle of Shallowford* and *The Fantasticks*. Some of Amy's favorite BLUEBARN shows include *Red*, *American Buffalo*, *the 39 Steps*, and *A Very Die Hard Christmas!*. In her free time Amy enjoys volunteering at a few places including HETRA, a Gretna based equine therapy program. She especially loves her fur children Ethel, Norman, Pearl and Rose, as well as her goldfish Elmer Fudd and Sylvester.

Bill Kirby - He/Him - Technical Director & Sound Designer

Bill joined the BLUEBARN staff as the Resident Creative and Technical Director in 2019, after working as a freelance designer for the two previous seasons. Favorite BLUEBARN productions include *Venus in Fur*, *Wakey, Wakey*, *Indecent* (OEA Award for Outstanding Sound Design), and *Red Summer* (OEA Award). Before relocating to Omaha in 2017, Bill spent 10 years as the resident sound designer and head sound engineer at Princeton University's McCarter Theatre Center. Bill's favorite McCarter productions include sound designing the original workshop production of Danai Gurira's *Eclipsed* and serving as the production sound engineer for the world premiere of Christopher Durang's *Vanya and Sonia and Masha and Spike*, which would go on to win the 2013 Tony Award for best play. Kirby has worked nationally and internationally, including productions at the New York Fringe Festival, LA's Kirk Douglas Theatre, the Wuzhen Grand Theatre in China, and the Repertory Theatre of St. Louis. Bill is a graduate of the Royal Welsh College of Music and Drama. Web: kirbysound.live



BLUEBARN Staff

Susan Clement

Producing Artistic Director

Erika Sieff

Managing Director

Amy Reiner

Director of Production & Properties Master

Heather Hoyt

Director of Development and Marketing

Bill Kirby

Resident Creative & Technical Director

Sydney Readman

Front of House / Box Office Manager &
Community Connector

Madelyn Hubbard

Resident Stage Manager

Francisco Franco

Production Assistant / Rentals Manager

Jimmy Nguyen

Graphic Designer & Community Connector

Marti Baumert

Bookkeeper

BLUEBARN Board

Devin J. Fox, MD, President

Robert Peters, Treasurer

Laura Peet Erkes, Secretary

Ethan Bondelid

Jannette J. Davis

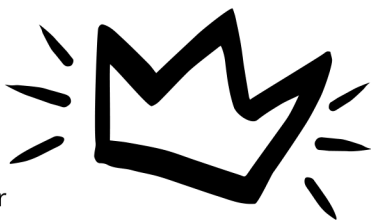
Sara Foxley

Sara McClure

Jim McKain

Michael Walenta

Susan Clement (ex-officio)



Facebook.com/BLUEBARN

@bluebarntheatre_omaha



@bluebarntheatre

@bluebarn.theatre



Al Marcault

Murphy Scott Wulfgar

Voodoo's Odd Shop

John "Johan" Leclerc

BLUEBARN Theatre

Season Contributors

July 1, 2022 - September 1, 2023

INSTITUTIONAL GIVING

\$25,000+

Douglas County
Holland Foundation
Shubert Foundation
The Fred and Eve Simon Charitable Foundation

\$10,000-\$24,999

First National Bank
Great Plains Theatre Commons
Mammel Foundation
Mutual of Omaha
Nebraska Arts Council (NAC)
Omaha Steaks International

\$5,000-\$9,999

Anonymous
Boomer Radio
Gilbert M. and Martha H. Hitchcock Foundation
Metro Community College
metroMAGAZINE
Valmont Industries, Inc.
Whitmore Charitable Trust

\$1,000-\$4,999

Big Muddy Workshop, Inc.
Bluestem Prairie Foundation
Highline Warren
Saro Cider Omaha
Sips on 10th
The Brownie Bar Omaha

\$10-\$999

AmazonSmile Foundation
Community Foundation for Western Iowa
Fashion Cleaners
Marti CPA LLC
Network For Good
PayPal Giving Fund
US Bank

INDIVIDUAL GIVING

Visionaries (\$15,000+)

Bruce Reneaud and Kerry Dobson

Masterminds (\$10,000-\$14,999)

Sandi and Bill Bruns
Marilyn Fox
Rob Block and Devin Fox
Amy Haddad and Steve Martin
Carter and Vernie Jones

Innovators (\$5,000-\$9,999)

Jannette Davis
Sara Foxley
Rich and Fran Juro
Ray Kawaguchi and Nancy Gilliland
Annette and Paul Smith
Jim and Susan Tracy
Tim Wilson and Dr. Katie Weitz

Renegades (\$2,500-\$4,999)

Jill Anderson
Laura Peet Erkes and Cory Erkes

Rebels (\$1,000-\$2,499)

Anonymous
Ethan and Susan Bondelid
Scott Carollo
Mary Coleen Jungman-Duda
Ruth Keene
Lou and Pat Lamberty
Dave Steadman & Sara McClure
Ryan and Rebecca McCreery
James and Kathy McKain
Don and Rita Otis
Richard and Mary Parrish
Robert and Barbara Peters
Shannon and Mike Walenta
George Wimmer and Ann Beckenhauer
Jay Worden and Timothy Held

BLUEBARN Theatre

Season Contributors

July 1, 2022 - September 1, 2023

Trailblazers (\$500-\$999)

Duane and Clare Baylor
Tony and Claudia Deeb
Dan Gallagher and Jeff Grinnell
Howard and Gloria Kaslow
George Kleine and Tom Knox
Sue A. Lawson
John and Renee Lillard
Alan Meyer
James and Bobbie
Montequin
Duncan and Rozanne
Murphy
Bradley Perry
Emily Tonniges

Groundbreakers (\$100-\$499)

Bill and Barb Anderson
Anonymous
Trish Battaglia
Doug and Liz Bisson
Marvin J Bittner
Cathy Blake
Katie Blesener and John
Royster
Amy and Dennis Boesen
Amy Bones
Amanda Boyle
Stephen and Anne Bruckner
Arlene Burianek
Leanne Carlson
Kent Clark
Susie and Dennis Collins
Timothy and Rachel Combs
Tricia Cottrell
Josh Cox and Josh Point
Michael Davidian
Susan and David Davies
Anne Dey
Benjamin Dey
Jeff Dickinson
George and Barbara Douglas
Jim and Sherry Douglas
Pete Eckerman and Sarah
Wengert
Ron and Mary Ferdig
Paige and Pete Festersen
Christopher and Lisa Fox
Duane and Jacqueline Fox
Renee and Douglas Fox
Linda Gjere

Caron Gray
Megan Green
M. Kathlyn Gross
Ellen Hargus
Betty Harris
Constance Heiden
Nancy Hemmingsen
Shari Hofschire
Durell Kidd and Ray Hogan
Nancy Hornstein
Maddy Hubbard
Catherine and Stephen Jesus
Julie Livingston and Dwight
Johnson
Kim Jubenville
Julie Kaminski
Ray Wood and Mary Keitel
Steve Kenyon and Mary
Stolinski
Birgit and Jimmy
Khandalavala
Jennifer Kinney
Julia and Joseph Knezetic
Debbie and Steve Krambeck
Craig Kramer
David and Vicki Krecek
Marie and Jack Kubat
Barbara and Marshall
Kushner
Laurie Lambert
Dale and Toni Larsen
Guy and Dorothy Lawson
Lyn and Natalie Leach
Richard and Norma LeClerc
William Liebermann
Alice Lindsay
Patricia Lontor
Mark Manhart and Bonnie
Gill
Wayne and Karen Markus
Gerald McAndrew
M E McDaniel
Amy McGaha
Steve and Jeanne Miller
Steve Mohr
Lynne Mytty
Karen and Larry Nelsen
Diana Nevins
Patty and Steve Nogg
Robert Ottemann and Kim
Kalkowski
Tanya Patry

Rosemary Pauley
Bruce and Deanna Plath
Jerry and Elizabeth Powell
Kathleen Rettig
Jill Rizzo and Brian Wetjen
Debra Romberger
Larry Salinas
Amy Sand
Jo Ann Schmidman
Mark Schulze
Luan and Jeffrey Scott
Todd and Betiana Simon
Randy Mousel and Stephen
Smith
Joan Squires
Thomas Stalnaker
Mary Eileen Stark
Joni and Jason Street
Mary Stultz
Gregory Swanson
Erica Sweany
Steve Hutchinson and Susan
Thomas
Molly Toberer
Katie Twit
Bob Sievers and Brad Tyson
Tom and Sue Weidner
Tracy and John Wells
Sadi Vila and Fajardo Ximena

Radicals (\$10-\$99)

Tim and Phyllis Adams
Deb Ady
Ronald Alexander
Greg Andersen
Daryl Anderson
Anonymous
Susanne Astley
Michael and Janelle Baber
Kevin Barratt
Benjamin Beck
Gregg and Pam Beeman
Karen Bluvass
William Bucy
April Butterfield
Ashley Byars
Daniel and Diana Byrd
Jim and Anne Carroll
Charitable Fund
Kay and Bernie Clark
Virginia Collins
Paula Cope

BLUEBARN Theatre

Season Contributors

July 1, 2022 - September 1, 2023

Diane Crouch
Dr. Debra Reilly and Bob
Culver
George H Curry
Erin Dahlke
Jeffrey Day
Stephen and Suzan DeCamp
Ricardo Delgado
Marty and Helen Desilets
Dan Dixon
Diplar Donations
Linda Duckworth
Peggy Dunn
Steve Ellefson and Chris Rix
Myrna Esluer
Ronald and Mary Filipowicz
Alan and Cordie Fisher
Betty Foster
Krista Freimuth
Bill Gaus
Rodger Gerberding and
Kathy Jurgens
Marilyn Gillen
Rose Glock
DeWayne Greim
Scott Groth
Cynthia Hadsell
Gary and Jane Hagebush
Elizabeth Hallgren
Hair For You Inc. John
Davison & Ron Hansen
Cathy Hanson
Tony Hartzell
Julie Hewett
Kari Hilliard
Ida Holliday
Gail Houghton
Nancy Huston
Stephanie and Dave Jenkins
Gloria Jensen
Susan Johnson
Dick and Linda Johnson
Michaela Johnson
Ann Johnson
Michaela Kanoski
Emily Kean Puccioni and Ron
Widman
Mary Kelly
Pat and Andy Ketterson
Susan Kimball
William Kingston

Merlyn Knudson and James
Davis
Gary Kudym
Leslie A. Kuhnel
Dan Miller and Ken Larose
Mary-Lu Larson
Kevin Lawler
Pat and Bruce Little
Anna Maio
Moira J. Mangiameli
Ross and Jill Manhart
Natalie Manley
Elizabeth McInerney
Lucia Milone and William
Dittrick
Maureen Mitchell
Hope Mock
Rachel Moody
Bobbie and Bruce Moore
Betty Morar
Ruth Muchemore
Howard and Lee Needelman
Michael and Linda Nichols
Margaret Niebling
Devon Niebling
Gail and Nancy Nielsen
Beth Nodes
Kerri O'Connell
Beth Ostiek Smith
Dennis Owen
Beth Paprocki
Michael Pflueger
Sara Pirtle
Thomas Purcell
Elizabeth and Robert Recker
Julie Ryan
Jeanne and Pat Salerno
Jason and Tammy Sealer
Melissa Seffens
Chris Shonka
Martin and Aveva Shukert
Erika Sieff
Kendall Ziebarth & Myron
Sikora
Cathy Solarana
Megan Sorensen
Steve and Audrey Spence

Kathleen Stage
Marian Standeven
Aaron Stovall
Cathy Tauke
Kevin Thompson
Mary Thomsen
Carol Schmid & Jerry Toll
Scott Van Den Top
Catherine Walling
Valerie Ware
Lindsay Weddle
Don Westling and Jo
Bartikoski
Mary Wiedman
M. Eugene Williams
Ron Wilson
Dave Wingert
Keith and Lisa Winton
Karen Wittler
Scott Working
Emily and Kirk Wynn



MEMORIALS & TRIBUTES

In memory of...

Jim Watson

Marti Baumert

Tim and Mary Lorenz

Lisa Wigand

Diane Watson

Bill and Sandy Matthews

Rachel and Timothy Combs

Bob Donlan

Mary & Ron Filipowicz

In Honor of...

Devin Fox

Sandra Smiley

SEASON 35 PRODUCERS

BLUEBARN celebrates its Season Producers that SPARK,
our 35th year of kick-ass theater!

Season Producers are patrons who have made contributions in addition to their TruBLU memberships. The donations we receive above and beyond our ticket sales and subscriptions are vital to BLUEBARN's artistic success, and to the livelihoods of the artists responsible for that success. Thank you for believing in our work and supporting professional theatre in Omaha.

Tim and Phyllis Adams
Ronald Alexander
Don Keelan-White
(Anonymous)
Gregg and Pam Beeman
Doug and Liz Bisson
Cathy Blake
Daniel and Diana Byrd
Leanne Carlson
Kay and Bernie Clark
Andrew and Mary Helen
Cockle
Paula Cope
Diane Crouch
Dr. Debra Reilly and Bob
Culver
Stephen and Suzan DeCamp
Ricardo Delgado
Dan Dixon
Linda Duckworth
Steve Ellefson and Chris Rix
Alan and Cordie Fisher
Krista Freimuth
Bill Gaus
Rose Glock
Dan Gallagher and Jeff
Grinnell

Gary and Jane Hagebush
Elizabeth Hallgren
Cathy Hanson
Nancy Hemmingsen
Durell Kidd and Ray Hogan
Ida Holliday
Gail Houghton
Stephanie and Dave Jenkins
Dick and Linda Johnson
Emily Kean and Ron Widman
Ruth Keene
Ray Wood and Mary Keitel
Susan Kimball
Leslie A. Kuhnel
Dan Miller and Ken Larose
Mary-Lu Larson
Guy and Dorothy Lawson
William Liebermann
John and Renee Lillard
Pat and Bruce Little
Patricia Lontor
Steve and Jeanne Miller
Lucia Milone and William Dittrick
Maureen Mitchell
James and Bobbie Montequin
Bobbie and Bruce Moore
Betty Morar

Lynne Mytty
Karen and Larry Nelsen
Diana Nevins
Kerri O'Connell
Beth Ostiek Smith
Robert Ottemann and Kim
Kalkowski
Rosemary Pauley
Robert and Barbara Peters
Thomas Purcell
Kathleen Rettig
Jeanne and Pat Salerno
Randy Mousel and Stephen
Smith
Kathleen Stage
Thomas Stalnaker
Cathy Tauke
Mary Thomsen
Katie Twit
Don Westling and Jo
Bartikoski
Mary Wiedman
Jay Worden and Timothy
Held

THE ARTISTS' FUND

EST. 2009

At BLUEBARN we believe that artists should be honored for their work not only with applause but with a paycheck. We believe that every theatre artist deserves to be paid fairly for their work, and we are committed to providing payment to every actor or artist working in our theatre. To honor this commitment, BLUEBARN established The Artists' fund in 2009, to support the creative spirits who help continue and propel the life of the BLUEBARN.

We recognize the following donors who have made contributions to The Artists' fund, and we'd like to add your name to this list! If you would like to contribute, please email Heather Hoyt at hhoyt@bluebarn.org, or donate online at www.bluebarn.org.

Anonymous

Elias Adams

Deb Ady

Ronald Alexander

Vicki and Steven Allely

Keith Allerton and Becky Noble

Bill and Barb Anderson

Cara Anderson

Judy Archer

Dean Arkfeld and Peggy Reinecke

Barbara Armstead

John Ashley

Tony and Susan Awender

Barbara Bakhit

Kevin Barratt

Betty L. Beach

Benjamin Beck

Carl Beck

Thomas and Lee Belford

Gerry Beltz

Paul Bennett

Bob Benzel and Gerry Sullivan

Sam Bertino

Doug and Liz Bisson

Big Muddy Workshop

Katie Blesener and John Royster

Jan Blosser

Bluestem Prairie Foundation

Karen Bluvas

Amy and Dennis Boesen

Amy Bones

Dana and Patricia Bradford

MaryLee Brock

Christina Broekemeier

Jeanne Brown

Stephen and Anne Bruckner

Sandi and Bill Bruns

Catrice Bryson

William Bucy

Jean Burggraf

Arlene Burianek

Char Bush

Larry Carlson

Leanne Carlson

Debbie Carman

Jim and Anne Carroll

Charitable Fund

Jeff Carstens DDS

Maria Caskey

Pamela Chase

John Christensen and Stacie Lamb

Kay Clark

Anthony and Kim Clark-

Kaczmarek

Babe Cohn

Susie and Dennis Collins

Timothy and Rachel Combs

Bruce and Marsha Congdon

David Corbin and Josie

Metal-Corbin

Mindy Cotner

Tricia Cottrell

Curb Appeal Salon and Spa

Janey Dann

Mary and Kurt Davey

David Davidson

Susan and David Davies

Thatcher Davis

Philip Dawson

Jeffrey Day

Mary Deak

Ricardo Delgado

John and Carol Dennison

Marty and Helen Desilets

Jeff Dickinson

Jaclyn DiGiacomo Oltmans

DipJar Donations

Alan Dorn

Terry Doughman

Linda Duckworth

Tiffany Dunagan

Peggy Dunn

Maguerite Dunn

Pete Eckerman and Sarah

Wengert

Steve Ellefson and Chris Rix

Myrna Esluer

Teri Fender

Ron and Mary Ferdig

THE ARTISTS' FUND

EST. 2009

Liz Fleissner	Shari Hofschire	Ashley Kobza
Sherry Fletcher	Bob Hoppe	Susan Ann Koenig
Benjamin Floyd	Andrea Howard	Karen Krall-Murphy
Jesse and Eileen Fonseca	Jacqueline Hoyt	Debbie and Steve Krambeck
Betty Foster	Julie Huff	Craig Kramer
James Fowler	Debra & Richard Humble	Michael Kreikemeier
Rob Block and Devin Fox	Richard A. Hunt	Gordon Krentz
Christopher and Lisa Fox	John and Nancy Hurley	Shane Krzycki
Marilyn Fox	John and Laura Iliff	Marie and Jack Kubat
Sara Foxley	Catherine Ingalls	Leslie A. Kuhnel
Leslie Frederickson	Joanie Jacobson	Barbara and Marshall Kushner
Nathan Frey	Stephanie Jacobson	Lou and Pat Lamberty
Darrel Frisch	Lynette Anthony and Donna James	Andrea Lang
Bill Gaus	Chris Janicek	Kathy Larimer
Kristine and Jared Gerber	Grace Janiszewski	Dale and Toni Larsen
Rodger Gerberding and Kathy Jurgens	Gloria Jensen	Kevin Lawler
Charlie Gill and Beth Molloy	Ann Johnson	Sue A. Lawson
Rose Glock	Kay Johnson	Patricia Leaman
Susan Goldsmith	Michaela Johnson	Connie Lee
Jeff and Danielle Gorman	Mary and Doug Johnson	Gina Leonardo
DeWayne Greim	Todd Johnson	Karen Levin
Bobby and Allison Grennan	Nakia Johnson	Alice Lindsay
Margaret Grennan	Carter and Vernie Jones	Pat and Bruce Little
Dan Gallagher and Jeff Grinnell	Cheri Jones	Patricia Lontor
M. Kathlyn Gross	Coulter Jones (In honor of Vernie and Carter Jones)	Marc Lowe
Haley Haas	Kim Jubenville	William and Constance Lowndes
Howard and Carol Hahn	Rich and Fran Juro	Marya Lucca-Thyberg
Daniel Hamann	Sissy Silber	Mammel Foundation
Mary Hamilton	Nate Kaufman	Don and Maureen Mangan
Jeni Hamlin	Steve Kenyon and Mary Stolinski	Moir J. Mangiameli
Ellen Hargus	Mary Kerr	Ross and Jill Manhart
Kimberly Harris	William and Maureen Kessler	Mark Manhart and Bonnie Gill
Michael and Leslie Harsh	Jimmy Khandalavala	Karen and Michael Markey
John Hartigan	Bill Kirby	Doug and Laura Marr
Constance Heiden	George Kleine and Tom Knox	Dennis Martin
Nancy Hemmingsen	Mogens Knudsen	Mele Mason
Team Hesse	Merlyn Knudson and James Davis	Gerry and Christy McAndrew
Mark Hewett		Gerald McAndrew
Denise Hill		Corey McCallan
Kari Hilliard		Teri McCarthy
		Deb and John McCollister

THE ARTISTS' FUND

EST. 2009

Ryan and Rebecca

McCreery

M E McDaniel

George and Carolyn

McDonald

Dede McFayden-Donahue

Amy McGaha

James and Kathy McKain

Lauren Medici

R & D Nicklin Memorial

Charity Fund Drive

Alan Meyer

Steve and Jeanne Miller

Steve Mohr

James and Bobbie

Montequin

Sue Moskovits

Barbara Motes

Ruth Muchemore

Joshua Mullady

William and Patricia Munro

Marie Murphy

Lynne Mytty

Carrie Nath

Karen and Larry Nelsen

Megan Neville

Diana Nevins

Mary Newman

Devon Niebling

Margaret Niebling

Roxanne R. Nielsen

Gail and Nancy Nielsen

Amy Niles

Helen Nosov

Thomas O'Brien

Kerri O'Connell

James Ogden

Carolyn Owen Anderson

Richard and Mary Parrish

Brigid Payton

Pauline Pechnik

Gail and Mervin Peck

Grant Pedersen

Laura Peet Erkes and Cory

Erkes

Bob Perrin

Bradley Perry

Peter Kiewit Foundation

Deb Peterson

Michael Pflueger

M. Michele Phillips

Amber Phillipsen

Westley Pierce

Jim and Kathleen Piper

Bradley and Sara Point

Cecilia Poon

Jerry and Elizabeth Powell

Francie Prier

Thomas Purcell

Caitlin Purcell

Kori Radloff

Ruth Rath

Elizabeth and Robert

Recker

Leslie Regan

Pegeen Reilly

M Jean Reiner

Bruce Reneaud and Kerry

Dobson

Therese Rennels

Doug Rennels

Barbara Rennett

Anonymous

Robin Richards

The Fred and Eve Simon

Charitable Foundation

Anne and David Rismiller

Christina and Carl Rohling

Marti Rosen-Atherton

John Rosman and Rod

Carlson

Sky Rotert

Susan Rothholz

Sara Rueschhoff

Donald Ruleaux

Carol and Rick Russell

Jeanne and Pat Salerno

Eric Sauvage

Deborah Savadge

Tony Schik

Jo Ann Schmidman

Jeffrey Schweid

Judy Schweikart

Richard Scott

Greg Searson

Betty Segell

Margaret Semin

Theodore Sewell

Shelly Shannon

Robert Sharp

Jeanne Shelton

Chris Sheridan

Chris Shonka

Martin and Aveva Shukert

Mark Siano

Myron Sikora

Michele and Peter Silberstein

Ronda Simpson

Marty Skomal

Sandra Smiley

Annette and Paul Smith

Laurie Smith Camp

Susie and Stuart Smoler

Brent Spencer and Jonis Agee

John and Sandy Spessard

Joan Squires

Thomas Stalnaker

Mary Eileen Stark

Meghann Stewart

Jean Stillmock

Kristine Stirn

Erin Strasil Larson

Sara Strattan

Mary Stultz

Heider Family Foundation

Erica Sweany

THE ARTISTS' FUND

EST. 2009

Bronson Sweet
Tony and Christine Swerczek
Analisa Swerczek
Jeff and Sherry Taxman
Steve Hutchinson and Susan Thomas
Suzanne Titus
Molly Toberer
Judy Torrens
Jim and Susan Tracy
Dorothy and Dean Tuma
Kent and Linda Tyler
Jenny Pullen and Karol Ulmer
Robert Urbinati
Quincy Valencia
The Vallier Family
Bill VanDeest and Carol Wisner
Scott Van Den Top
Ann M. Van Hoff

Gail and Irv Veitzer
Thomas and Jennifer Vinton
Christopher Violet
Judd and Pat Wagner
Madeline Wahl
Shannon and Mike Walenta
Kathleen Walenta
Diane and Julie Walker
Hughston Walkinshaw
Paula Wallace
Diane Watson
Tom and Sue Weidner
Kate and Roger Weitz
Weitz Family Foundation
Janet West
Don Westling and Jo Bartikoski
Mary Wiedman
Tammy and John Williams
M. Eugene Williams
Nancy Williams

Lucia Williams and William Ditrack
Stephen Williams
George Wimmer and Ann Beckenhauer
Dave Wingert
Keith and Lisa Winton
Jackee Wise
Diane Withem
Karen Wittler
Casey Wood
Jay Worden and Timothy Held
Scott Working
Aaron Wrigley
Deborah Wyatt
Patrick Wyman
Robert Yazowski
Charlotte Young
Damian Zuerlein
Amy and Tim Zweiback



WISH LIST

SUN SHADES

BIG OUTDOOR FANS

AMAZON WISH LIST AT THE QR CODE



THE BLUEBARN THRIVES THANKS TO THE GENEROUS FINANCIAL
SUPPORT OF OUR FRIENDS AND CONTRIBUTORS.



TO MAKE A DONATION, CONTACT HEATHER HOYT
AT 402.345.1576 X 6 OR HHOYT@BLUEBARN.ORG.
DONATE ONLINE AT BLUEBARN.ORG/DONATE

DONATE TODAY!

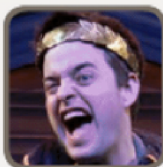
Please consider supporting the BLUEBARN with a donation. Your gift will help professional theatre thrive in Omaha and support the heart of our mission: **to provoke thought, emotion, action, and change.**

WAYS TO GIVE

- Look for our **Giving DipJar** in the Lobby and Dip to Donate! Simply dip your credit card for a fun and fast way to give.



- Give Online: bluebarn.org/donate
- Call Us Directly: **402.345.1576 x6**
- Drop Your Gift in the Mail:
1106 S 10th St Omaha, NE 68108



1989



2024



NEW YORK BORN - OMAHA RAISED

On Sale Now!

Beautiful

The Carole King Musical

Starting at
\$25



Sept. 15 – Oct. 15

Hawks Mainstage

Directed by Stephen Santa



omaha**community**playhouse

6915 Cass St. | (402) 553-0800 | OmahaPlayhouse.com

Hawks Mainstage
Series Sponsor:
 Immanuel

Presenting
Sponsor:
 Mutual of Omaha

Orchestra Series
Sponsor:
 CHI Health

Artistic Team
Sponsor:
 SECURITY
NATIONAL BANK

Special Effects
Sponsor:
 KPMG

Costume Care
Sponsor:
 MAX L WALKER






ticket
Omaha

MIDLANDS **business journal**

Subscribe to the MBJ

mbj.com/subscribe



**Local Business & Community News
We got you covered.**

**Midlands Business Journal
\$7/month**

A full year of MBJ delivered either digitally, in print or both (52 issues)

**Insider news for the Omaha metro area including the counties of:
Douglas, Sarpy, Pottawattamie & Lancaster via mbj.com**

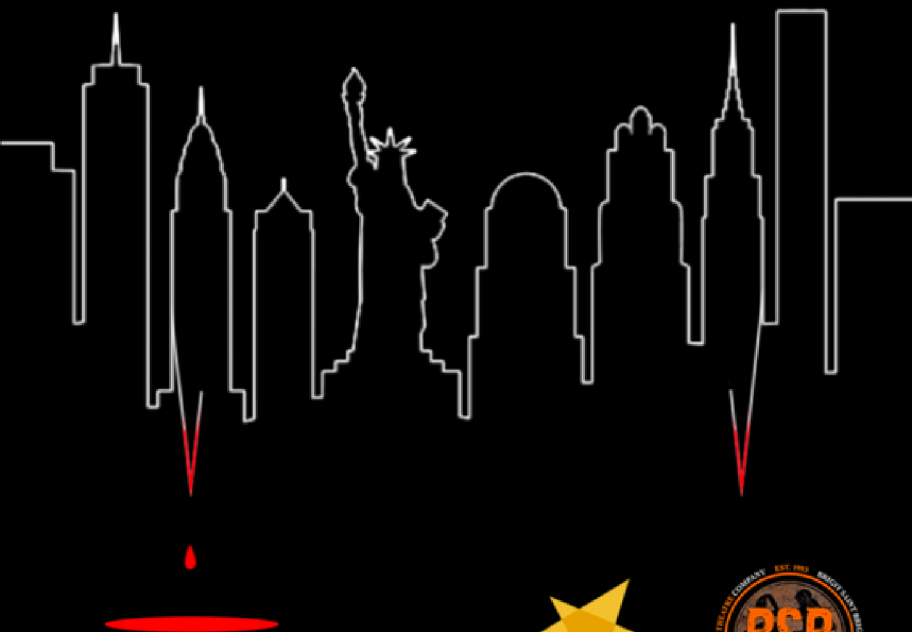
Unlimited access on any device

Bonus publications including:

Corporate Giving Guide & Event Book, 101 Things to LOVE about the Omaha metro,
metroMAGAZINE, 40 Under 40, Book of Lists plus more!

Discounted tickets to MBJ & metroMAGAZINE signature events and more!

DRACULA 77



**BENSON THEATRE
BRIGIT SAINT BRIGIT THEATRE COMPANY
VOX DANCE COLLECTIVE**

Dracula 77 presents Bram Stoker's story as written in 1897
Whitby, England—with all the excitement, drama, fear, and passion
of the original – and sets it in 1977, New York.

OCTOBER 5TH - 8TH & 12TH - 15TH 2023

TICKETS AT WWW.BENSONTHEATRE.ORG



FILM STREAMS™

RUTH SOKOLOF THEATER
DUNDEE THEATER

Join Omaha's premier nonprofit arthouse cinemas to engage in a variety of programs within five principal areas:

- ▶ NEW RELEASES
- ▶ CLASSICS
- ▶ COMMUNITY ENGAGEMENT
- ▶ EDUCATION
- ▶ SPECIAL PROGRAMS

FOR SHOWTIMES AND
MORE SCAN OR VISIT
FILMSTREAMS.ORG



RUTH SOKOLOF THEATER
1340 MIKE FAHEY STREET
OMAHA, NE 68102
FILMSTREAMS.ORG

FILM  STREAMS™

DUNDEE THEATER
4952 DODGE STREET
OMAHA, NE 68132
FILMSTREAMS.ORG

AN ART FORM · DEVOTED TO THE PRESENTATION AND DISCUSSION OF FILM AS AN ART FORM · DEVOTED TO

The names you know and love!

LEGENDARY LINEUP
LIVE & LOCALLY
OWNED
BOOMER!
radio



94.5 • 1490 • 104.1 • 97.3



DAVE WINGERT



CHUCK YATES



JACK SWANDA



NEIL NELKIN

myboomerradio.com



NOW OPEN

THE LAST ACT IS ACROSS THE STREET

AFTER THE SHOW, CAP THE NIGHT OFF AT
OMAHA'S NEWEST COCKTAIL AND CHAMPAGNE BAR.

1022 S. 10TH ST.

COCKTAILS • FOOD • CHAMPAGNE