



SEASON

35

\*SPARK\*



BLUEBARN THEATRE



*via farina*

**CAREFULLY CRAFTED  
PASTA & PIZZA**



**LATE NIGHT HAPPY HOUR  
AFTER THE SHOW**

GOVIAFARINA.COM (402) 502.9880



A PERFORMANCE SO GOOD YOU'LL

# » COME BACK « FOR SECONDS

Omaha Steaks is proud to sponsor  
the BLUEBARN Theatre and the arts  
community this holiday season.



Shop your local store, call, or visit online:

96th and J Street  
North of L Street

Lakeside Plaza  
17390 West Center

Tower Plaza  
78th and Dodge

OmahaSteaks.com  
1.800.228.9055

# THE NUTCRACKER

**December 9 & 10**  
Orpheum Theater

Freshly baked  
for you: a delightful  
new Gingerbread  
dance!

Company artist  
Whitney Woods

AMERICAN  
MIDWEST  
**Ballet**  
[amballet.org](http://amballet.org)



**FEBRUARY 16 & 18**

## LA TRAVIATA

Composed by Giuseppe Verdi  
Libretto by Francesco Maria Piave

ORPHEUM THEATER

[TICKETOMAHA.COM](http://TICKETOMAHA.COM)



**Arthur  
& Friends**  
Make a Musical!

**LIFE DOESN'T  
FRIGHTEN ME**

**night at  
the FARM**  
a bedtime party

**THE ROSE'S  
THREE  
LITTLE BIRDS**



**Charlotte's  
Web**

# Imagine the POSSIBILITIES

Anything is possible at The Rose! This season at The Rose, we invite you to step into the spotlight alongside favorite characters with *Arthur & Friends Make a Musical* and *Rudolph the Red-Nosed Reindeer*. Be empowered with Maya Angelou's *Life Doesn't Frighten Me*. Meet farmyard friends in *Night at the Farm* and find a new groove *Three Little Birds*. Enjoy a silly twist on the classic *Red Riding Hood*, experience the wonder of friendship with *Charlotte's Web*, and discover what makes life sweet with *Charlie & the Chocolate Factory*.

Anything is possible as the curtain rises, the lights begin to twinkle and the story begins. It all begins this season at The Rose! **Imagine the possibilities!**

**PLUS...Rose members get DISCOUNTED TICKETS to 2023-24 Premium Events:**

***Rudolph the Red-Nosed Reindeer* and *Charlie & the Chocolate Factory*!**



**JOIN TODAY!**

**402-345-4849**

[www.rosetheater.org](http://www.rosetheater.org)



**CHANTICLEER COMMUNITY THEATER PRESENTS**

**OH, FUDGE!**

**A CHRISTMAS STORY**

**The Musical**

SPONSORED BY SHERRY G. BILLS-TAYLOR

**DEC 07-10 & 14-17, 2023**

**THU-SAT 7:30PM & SUN 2PM**

**SCAN CODE FOR TICKETS!**

**HOFF FAMILY ARTS & CULTURE CENTER**  
1001 S 6th St Council Bluffs, IA

**FINESSE**  
ADVANCED MEDICAL AESTHETICS

402 671-0396 | [www.FinesseOmaha.com](http://www.FinesseOmaha.com)

Finesse was born from the desire to provide quality, safe and conservative aesthetics treatments. It takes years of experience, a discerning eye and a willingness to listen to what a client needs to feel and look their best.

**Don't trust your face to just anyone.**

Leanne Carlson, PA-C

**Specializing in Botox, Fillers, RF Microneedling, and other Medical Grade Skin Care Needs**

Proud Supporter of the Blue Barn Theatre



When you're downtown...  
Try the RICHEST Around!

# Ted & Wally's

= ICE CREAM =

**OLD MARKET**  
1120 Jackson St  
(402) 341-5827

**BENSON**  
6023 Maple St  
(402) 551-4420

OMAHA NE - EST 1986



@tedandwallys

# ADVENTURE AWAITS OFFSTAGE



## SARO CIDER LOUNGE

Full Bar  
Live Music

Gluten-Free  
Appetizers

Local Draft  
Cider

SAROCIDER.COM

1012 S. 10th St.  
Omaha, Nebraska

2023 UNDEFEATED CIF CHAMPIONS



ARTISAN  
COMMERCIAL & DEVELOPMENT



SCAN THE QR CODE FOR TICKETS  
WWW.BEEFFOOTBALL.COM - (402)-346-2333

## Proud to Support Bluebarn

Best of Luck to  
all the performers!

Great Pay and  
Benefits Package!

Apply online at  
[highlinewarren.com/job-openings/](http://highlinewarren.com/job-openings/)





# BLUEBARN SEASON 35 SPARK



## MACBETH

BY WILLIAM SHAKESPEARE

SEPTEMBER 21 – OCTOBER 22, 2023

## A VERY DIE HARD CHRISTMAS

BY JEFF SCHELL AND THE HABIT

NOVEMBER 24 – DECEMBER 17, 2023



## THE GREAT LEAP

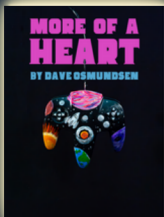
BY LAUREN YEE

FEBRUARY 1 – FEBRUARY 25, 2024

## MORE OF A HEART

BY DAVE OSMUNDSEN

MARCH 28 – APRIL 21, 2024



## POTUS:

OR BEHIND EVERY DUMBASS ARE SEVEN WOMEN  
TRYING TO KEEP HIM ALIVE

BY SELINA FILLINGER

MAY 23 – JUNE 23, 2024

BLUEBARN.ORG  
402-345-1576

1106 S. 10TH ST, OMAHA NE



SCAN ME

## WELCOME FROM THE BOARD PRESIDENT



Greetings BLUEBARNers, and Happy Holidays to you all!

It's a delight to welcome you to the BLUEBARN for one of Omaha's newest and most popular holiday traditions - the BLUEBARN holiday show! Take a moment to reflect on the incredible and often

more lighthearted programming that has come to our December stage over the years: Santaland Diaries, Silent Night of the Lambs, Every Christmas Story Ever Told (and Then Some!), and, yes, Little Nellie's Naughty Noel (\*blush\*), among many others. This year, we are pleased to present one of the most popular - A Very Die Hard Christmas! - for an encore performance. Is it a Christmas movie, or isn't it?? I think this stage adaptation settles that question (YES!) once and for all.

I know you will have a blast at the Theatre today and hope you come back with friends and family to share Die Hard with them. As well, take a moment to peruse this season's remaining shows. As usual, we have a variety of offerings that will not only entertain, but as well will support our mission of provoking thought, emotion, action, and change.

And that critical mission can't continue without support from you all. Please look out for our year-end fundraising appeal and consider BLUEBARN in your giving this year. A huge thank you on behalf of the BLUEBARN board to those of you who have already given, and in advance for those who soon will!

Enjoy the show!

Sincerely,

A handwritten signature in cursive script that reads "Devin Fox".

**Devin Fox, Board President**

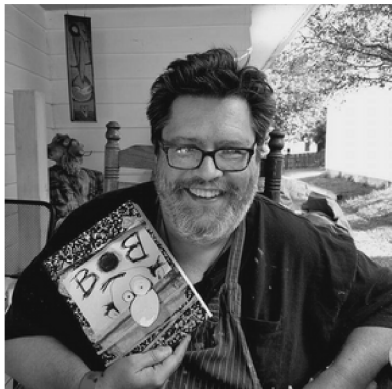




# Artist, Scenic Designer, Friend of the BLUEBARN...

## BOB DONLAN

BLUEBARN will be using the same original set design as our 2019 production, created by our wonderful Scenic Designer, Bob Donlan, who has since passed. We would like to honor Bob's memory with a tribute written by our scenic artist, Craig Lee



Here are a few words about my friend Bob. First, if you knew Bob you recognized that you were lucky. My first memory of getting to know him was as co-workers on a movie set. I was new to the project, he'd been there a couple of weeks. His humor was what attracted me (it's always the humor), and his easy handling of any work assigned made him seem like an expert at everything we were doing. That really struck me-how did he already know how to do that? After getting to know him a little better and working with him a few more times I realized how talented and prolific he was. His paintings, comics, sculptures, and theatre pieces could break your heart, dazzle your eye, or make you smile before you were aware of why. If you were lucky enough to see the mini-retrospective of his work we hosted here at BLUEBARN in the days after his passing you know what I mean. If not, I hope the set design he did for this production is the tribute to our remarkable friend we've intended it to be. Bob was a real original, and his big personality and bigger heart made everyone who knew him feel at home and in on the joke. I'll miss our conversations and his quick wit. Wish we had a few more years with him because for all he accomplished and for as many lives as he touched, I can't help thinking he was just getting started.

***-Craig Lee***

**BLUEBARN's holiday smash hit is back! Join us at Nakatomi Plaza as John McClane battles Hans Gruber with Christmas itself on the line. This madcap celebration of 1980s nostalgia will have you rolling in the aisles, whether you're a DIE HARD virgin or you know every line of the movie by heart.**

***This performance runs approximately 2 hours with one intermission.***

Please silence all cell phones, smart watches, and other noise-making devices.

Artwork design by Carly Frolio



**BLUEBARN THEATRE**  
**PRESENTS**

**A VERY**  
**DIE HARD**  
**CHRISTMAS**

**BY JEFF SCHELL AND THE HABIT**  
**NOV 24 – DEC 17, 2023**

A Very Die Hard Christmas was originally produced in 2018 by Marxiano Productions and Seattle Public Theater, with original music by John Kranz and Mark Siano, under the direction of Mark Siano. Music Direction was by JohnKranz, Production Design by Ron Darling, Sound Design by Rob Whitmer, Properties by Robin Macartney, and Stage Management by Noël Parkinson.

# SHOW SPONSORS



**Vernie & Carter Jones**

 **Highline Warren** **Ben & Mel Teply**

# 35TH SEASON SPONSORS

**HOLLAND** foundation      Fred & Eve Simon Charitable Foundation      THE **SHUBERT** FOUNDATION

Anonymous Foundation      Mammel Foundation      Amy Haddad & Steve Martin  
Giger Foundation      **94.5 BOOMER!**      **valmont.** 

**MAVEN**SOCIAL

**Fashion Cleaners**  
■ PASSION ■ SERVICE ■ INNOVATION ■



Would you or your company like to sponsor a BLUEBARN production? Contact Heather at 402.345.1576 x6 or [hhoyt@bluebarn.org](mailto:hhoyt@bluebarn.org).



## **ENOA "Giving HeARTs" Tree**

**Throughout the run of the show  
Giving HeARTs Tree Located in the Mammel Lobby**



BLUEBARN is proud to continue its partnership with Eastern Nebraska Office on Aging (ENOA), now in its 16th year! Ornaments bearing the names of local elders in need will be on sale on the "Giving HeARTs" tree located in the lobby. Become an elf for the elderly by fulfilling holiday gift needs for seniors in the region.

# "DIE HARD" ENGAGEMENT PROGRAMMING

Engagement events are free and open to the public



Saro Cider / BLUEBARN Theatre  
presents...

## Christmas Movie Trivia Night

Hosted by DIE HARD cast members Theresa Sindelar and Bill Grennan

Tuesday, December 5th | 7:00 pm – 9:00 pm

Location: Saro Cider | 1012 S 10th St, Omaha, NE 68108

Let's kick off the Holiday Season in style with a Christmas Movie themed Trivia Night! Join us for an evening of festive fun as we test your knowledge on beloved holiday classics like "It's a Wonderful Life", "Elf", "Home Alone", and (is it even a Christmas movie?) "DIE HARD"! So, grab your Santa hats, put on your best John McClaine-inspired attire, and assemble your friends and family for a jolly night filled with laughter, cider, and prizes for those who know their Christmas Movie Trivia best!

\*1st Place team: 2 single tickets for DIE HARD & one \$50 gift card to SARO Cider

2nd Place team: \$20 gift card to SARO Cider & a Surprise Prize

## ART IN THE BLUE CURATED BY JARED SPENCE



### DIE HARD ART EXHIBITION

The "POP!" exhibit is on display to the public, 45 minutes prior to the show, M-F during Box Office Hours, 10 am-4 pm.

## "POP!" DIE HARD Art Exhibition

Art in the Blue | BLUEBARN Mammel Lobby  
Curated by Jared Spence

### ARTISTS

Barber, Brandon Rial, Courtney Kenny  
Porto, Thomas Prinz, Brad Marr, Andrew  
Johnson, Dan Crane, Derek Courtney

All art proceeds will go directly to the  
participating local artists

For full Engagement Info visit [bluebarn.org/engagement](http://bluebarn.org/engagement)

## LAND ACKNOWLEDGEMENT

The BLUEBARN Theatre stands in honor of the first inhabitants and our ancestors. We acknowledge the land on which The BLUEBARN stands — the unceded territory of the Umonhon ('um AHhah") and ochethi Sakoiwic, We acknowledge the painful history of genocide and forced removal from this territory. We honor the generations of stewards, and we pay our respects to the many diverse Indigenous peoples still connected to this land

**Visit [native-land.ca](http://native-land.ca) to discover the native land on which you reside or currently find yourself.**

## ANTI-RACISM | ANTI-OPPRESSION ETHOS

**BLUEBARN Theatre owns that systemic racism is real, always at play, and intersects with multiple systems of oppression and that all must be fought against wherever and however they show up - in our community, in our theater, in ourselves.**

### **ANTI-HARASSMENT & INCLUSION**

BLUEBARN Theatre is committed to fostering a culture of civility, dignity, and respect as a right and responsibility of all who walk through its doors. Employees, guest artists, volunteers, and patrons are entitled to and responsible for maintaining an environment of mutual trust - free from intimidation, exploitation, harassment, and discrimination. Offensive, abusive, or unwelcome verbal or physical conduct will not be tolerated. Adhering to this standard is vital to the BLUEBARN's mission.

### **DIVERSE AUDIENCE PRACTICES PRINCIPLE**

Hospitality has always been one of BLUEBARN's core values. Welcoming you to this space is our great joy. You are invited to bring your full self to the experience. Audible reactions and responses are absolutely welcome. For some people, this is church, for some a meditative space, for others an escape, and we invite you to respect the ways that others engage in the experience based on their individual or cultural practices. By gathering at the BLUEBARN, you have committed to a shared experience in community with others, free from etiquette shaming, microaggressions, and entitled behavior.



# ACCESS

BLUEBARN Theatre is committed to ensuring that our boundary-breaking theatre is accessible to everyone. We are committed to easing cost barriers for young professionals and students. We are committed to providing low-cost, last-minute opportunities for anyone to see a show. We are committed to recognizing those who give the most in service to our community.

## BLUCrew - Young Patron Development Program

Anyone 35 or under is eligible. Members receive rush pricing for most Sunday and Thursday shows throughout the season with no upfront cost. Contact Sydney at [sreadman@bluebarn.org](mailto:sreadman@bluebarn.org) to join BLUCrew.



## Rush Tickets

Every unsold seat. Every show. \$20. Available only at the box office, 45 minutes before curtain. If we're not sold out, you have a new way in.



## Nebraska Educators, Healthcare Workers, and Military Personnel

\$4 off all tickets. All the time.



## Radical Hospitality

Sometimes you need a break. It doesn't matter why. For pay-what-you-wish tickets to any show, contact Sydney at [sreadman@bluebarn.org](mailto:sreadman@bluebarn.org).



## Assisted Listening Devices

These are available at the box office for mainstage productions. BLUEBARN also utilizes Listen Everywhere, a smartphone application that allows you to stream audio directly to your own headphones and Bluetooth-compatible hearing aids. See our box office staff for assistance or scan the QR code provided.



An **American Sign Language** interpreted performance is offered for **DIE HARD** on **Friday, December 1st**, generously supported by the Nebraska Arts Council.

An **Audio Description Service** is provided through Outlook Nebraska upon request. Audio-described performances fall on the 3rd Thursday of each run when requested.

**Sensory Kits** are available at the box office and the lobby is always available as a respite from the performance environment. Sensory Kits provided by **Autism Action Partnership**.

To request these or additional accommodations, or for more information, Please call **(402) 345-1576** or email Sydney at [sreadman@bluebarn.org](mailto:sreadman@bluebarn.org).

## CAST

John McClane.....	<b>Josh Peyton</b>
Hans Gruber.....	<b>Hughston Walkinshaw</b>
Holly Gennero.....	<b>Nina Washington</b>
Joseph Takagi.....	<b>Wai Yim</b>
Narrator, Ensemble.....	<b>Erika Hall-Sieff</b>
Piano Man, Heinrich.....	<b>Todd Brooks</b>
Sgt. Al Powell.....	<b>Raydell Cordell III</b>
Karl.....	<b>Theresa Sindelar</b>
Argyle, Theo.....	<b>Kerron Stark</b>
Ellis, Ensemble.....	<b>Jonathan Purcell</b>
Fist Toes, Agent Johnson 1, Ensemble.....	<b>Daena Schweiger</b>
Ginny, Ensemble.....	<b>Diane Watson</b>
Agent Johnson 2, Ensemble.....	<b>Therese Rennels</b>
Deputy Dwayne, Ensemble.....	<b>Don Harris</b>
Dick Thornburg, Ensemble.....	<b>Bill Grennan</b>
Thomas Becker.....	<b>Understudy</b>

## PRODUCTION CREATIVES

Director.....	<b>Susan Clement</b>
Music Director.....	<b>Todd Brooks</b>
Choreographer.....	<b>Melanie Epps</b>
Fight Choreographer.....	<b>Ezra Colón</b>
Stage Manager.....	<b>Madelyn Hubbard</b>
Original Scenic Designer.....	<b>Bob Donlan</b>
Original Lighting Designer.....	<b>Josh Mullady</b>
Original Costume Designer.....	<b>Jenny Pool</b>
Costumes.....	<b>Keryl Brady and Carole Zacek</b>
Production Manager & Props Design.....	<b>Amy Reiner</b>
Sound and Projection Designer.....	<b>Bill Kirby</b>
Scenic Artist.....	<b>Craig Lee</b>
Sound Board Operator.....	<b>Mindy Cotner</b>
Master Carpenter.....	<b>Shane Staiger</b>
Master Electrician.....	<b>Sally Grosenbach</b>
Backstage Crew.....	<b>Chloe Fulbright and Megan Rader</b>
Art Curator, Mammel Lobby.....	<b>Jared Spence</b>



National  
New Play  
Network

**BLUEBARN Theatre** is an Associate Member of the **National New Play Network**.

**NNPN** is an alliance of professional theatres across the country that are evolving and exploring the frontiers of the American theatre. **BLUEBARN** has long been Omaha's home for professional contemporary theatre, bringing diverse perspectives, new voices, and provocative work to our community. The **National New Play Network** has become the most powerful, growing force in new play development, production, and promotion in the nation.

**BLUEBARN** is committed to seeking out collaborative relationships with other NNPN member theatres, producing and supporting the work of the most dynamic emerging voices in contemporary playwriting, and promoting local artists on a platform with national reach.

To support New Play Development at the **BLUEBARN**, contact Susan at [sclement@bluebarn.org](mailto:sclement@bluebarn.org). To learn more about **NNPN** and its programs, visit [NNPN.org](http://NNPN.org).

## CAST BIOS



### **Thomas Becker - he/him - Understudy**

Thomas has performed with The Shakespeare Theatre in Washington, DC, and the California Shakespeare Theatre. He teaches English and Drama at Duchesne Academy. His recent roles at Omaha's BLUEBARN Theatre include: Lear in King Lear, Teach in American Buffalo, Carmichael in A Behanding in Spokane, and Jekyll in Jekyll and Hyde. He performed as Krapp in Bridget St. Bridget's production of Krapp's Last Tape, Richard Harkin in The Seafarer, and Malvolio in Twelfth Night. At the Omaha Community playhouse he was Stan in Sweat, Atticus in To Kill a Mockingbird and Juror number Eight in 12 Angry Men. His award-winning audio book narrations for Commuter's Library include The Humor of Mark Twain and The Adventures of Huckleberry Finn.



### **Todd Brooks - he/him - Piano Man, Heinrich, Music Director**

Todd Brooks is a graphic artist for a local Omaha company and prepares taxes seasonally for H&R Block. Performing since he was five, Todd has continued to entertain audiences across the region. Whether it is behind the scenes as a director, accompanist, arranger, writer or backup vocalist or on stage as an actor or singer, he can usually be found involved in some kind of arts endeavor. He continues to sing and play the piano for cabarets, churches, special events and performs with professional choral groups. He also serves as President for SNAP! Productions.



### **Raydell Cordell III - he/him - Sgt. Al Powell**

Raydell is excited to return back to the BLUEBARN stage! He was in The Legend of Sleepy Hollow, A Very Die Hard Christmas, Red Summer, and The Christians (TAG Award Best Supporting Actor) at BLUEBARN. Raydell is a local actor and has been in numerous productions throughout the community. Some of his favorite and recent shows would include Miranda in The Tempest at Old School Shakespeare Omaha, The Diary of Anne Frank at the Rose Theater, A Midsummer Night's Dream with Nebraska Shakespeare Fall Education Tour, Stupid F'in Bird and To Kill a Mockingbird (OEA Award for Best Supporting Actor in both productions) at the Omaha Community Playhouse. In addition, Raydell had the privilege to travel to the United Kingdom and participate in workshops with the Royal Shakespeare Company. Raydell has a bachelor's in Theatre from the University of Nebraska at Omaha and a master's in Elementary Education from the College of Saint Mary. Raydell currently works at Loveland Elementary (Westside Community Schools) as a sixth-grade teacher and oversees the theatre program. He would like to thank everyone who has supported him: family, friends, and the theatre community here in Omaha!







### **Bill Grennan - he/him - Dickie Dickberg, Ensemble**

Bill is excited to be back at the BLUEBARN performing in A Very Die Hard Christmas! His other previous BLUEBARN acting credits include playing Clown #1 in The 39 Steps, Otto in Spring Awakening, Himself in The Ultimate Christmas Show (Abridged) and Every Xmas Story Ever Told (and then some!), Bogle in Jacob Marley's Christmas Carol, The Little Drummer Boy in Who Killed Santa?, and Stranger #1 in Gnit. He made his BLUEBARN directing debut last season with Every Xmas Story Ever Told (and then some!). He's also worked behind the scenes at BLUEBARN as Projection Designer for 33 Variations, Frost/Nixon, The Christians, and An Act of God. When not on stage, Bill serves as the Education and Engagement Manager for Omaha Performing Arts, enriching the lives of over 100,000 students and adults in Nebraska every year through the arts. He holds a B.F.A. from Creighton University and M.A. from the University of Nebraska - Omaha.



### **Don Harris - he/him - Deputy Dwayne, Ensemble**

Don Harris is delighted to return to A Very Die Hard Christmas for a third time. Other BLUEBARN Credits include: Poseidon Adventure and Upside Down Musical. Mr. Harris has been seen around the Omaha Community at Bellevue Little Theater, Firehouse Dinner Theatre, Upstairs Dinner Theatre, Dundee Dinner Theatre, Brigit Saint Brigit, Circle Theatre, SNAP!, The Rose, The Emmy Gifford Children's Theatre and over 25 productions at the Omaha Community Playhouse. Some of his favorite shows include Gypsy, Spamalot, Young Frankenstein, The Producers, Catch Me If You Can, and On Golden Pond just to name a few. He hopes you enjoy the show, "And for the love of GOD. Please silence your cell phones"



### **Josh Peyton - he/him - John McClane**

Josh Peyton is thrilled to be returning to the BLUEBARN stage to reprise his role as Officer John McClane. Previous BLUEBARN credits include his role as IChabod Crane in The Legend of Sleep Hollow and the Fool in King Lear. Most recently, Josh appeared as Jason in Clyde's, the Dentist in Little Shop of Horrors, George in Of Mice and Men, and as Sam in Fully Committed (Omaha Arts and Entertainment Award- Best Actor), all at the Omaha Community Playhouse. An Omaha native, Josh received his B.A. in Theatre Performance from Creighton University in 2009. Since then Josh has served as the interim play and musical director at Roncalli Catholic High School and currently works at Mutual of Omaha. Josh has a severe addiction to all things movies and before moving back to Omaha, lived in Burbank, CA where he was employed as a VIP Tour Guide on the Universal Pictures lot. And speaking of movies, Josh would like to state for the record that Die Hard is NOT A Christmas movie. It is THE Christmas movie. Yippee Ki Yay, MF.



### **Therese Rennels - she/her - Agent Johnson 2, Ensemble**

Therese returns with joy to Nakatomi Plaza for the third time with this excellent group. She has appeared on many area stages over the years. Her TAG Award winning roles include "Angels in America", "Sordid Lives", and "Splendor." Other favorites include, "Poseidon, An Upside Down Musical", (BLUEBARN), "Gypsy", , "Cabaret", "42nd St.", "Noises Off", "Calendar Girls", and "The Wizard of Oz." Most recently, she appeared in "Doublewide, Texas" at the Lofte Theatre. A retired registered nurse, Therese enjoys painting, and hanging out with her seven kids and ten grandkids. Many thanks to her wonderful husband Doug for his support, and the baked goods for the cast.



### **Jonathan Purcell - he/him - Harry Ellis**

Jonathan Purcell is pumped to be back at the party and reprise his role as Harry Ellis. He was most recently seen at the BLUEBARN last holiday season in Every Christmas Story Ever Told (and then some!) as a guy named Jonathan Purcell. Other BLUEBARN roles include Lemml in Indecent (OEAA outstanding actor), The Ultimate Christmas Show (Abridged), Liam in Bad Jews, Bobby in American Buffalo, and a whole freaking town in Gnit. Jonathan is an Omaha native, was a co-founder of the former independent theater group the F-Troupe Collaborative, as well as H-Minus Film Productions, both of which he acted and/or co-produced on all projects. He has acted, written/co-written, co-produced, and worked on numerous other short films, features, music videos, and other productions. He has also appeared on numerous stages in the area, including at the Joslyn Castle Art & Literacy Fest, the Great Plains Theater Commons, Brigit St. Brigit, the Omaha Community Playhouse, Bellevue Little Theater, the Shelterbelt Theater and SNAP! Productions. Jonathan also works as an Adaptive Therapy Specialist at the Munroe Meyer Institute's Recreational Therapy department in multiple programs and coordinates several others; including their performing arts and theater based activities, community based social events, and an adaptive biking group.



### **Daena Schweiger - she/her - Fist Toes, Agent Johnson 1, Ensemble**

Daena Schweiger is an Omaha native and received her B.F.A. in Theatre with an emphasis in acting from UNL. She appeared on the BLUEBARN stage this summer as Maeve in Dance Nation, and portrayed Emanuelle Giri in The Resistable Rise of Arturo Ui. She has performed at The Omaha Community Playhouse, Bellevue Little Theatre, SNAP! Productions, The Shelterbelt Theatre, Joslyn Castle, and Baby D Productions. She also appeared as Jeannette d'Arcy in Children of the Tree at the Hudson Guild Theatre in NYC. Daena is an accomplished director, helming 20+ productions in and around the Omaha metro, as well as the Chanticleer Theater in Council Bluffs. When not working on a theatrical production she can be found huddled inside a walk-in closet at home narrating audio books or editing episodes of Thank You 5, a podcast she created and hosts devoted to the Omaha theatre scene.



### **Erika Hall-Sieff - she/her - Narrator, Ensemble**

Erika is one lucky lady, since in addition to her daytime role of Managing Director at the amazing BLUEBARN Theatre, she has also been an Omaha area performer for many years. Past BLUEBARN Theatre credits include The Resistable Rise of Arturo Ui (Ensemble), Bug (RC), Rabbit Hole (Izzy), Five Women Wearing the Same Dress (Mindy McClure), Seascape (Sarah-Lizard), and A Piece of My Heart (MaryJo). Other favorite roles include Patsy Cline in Always, Patsy Cline (Omaha Community Playhouse and PART), Annie Oakley in Annie, Get Your Gun (Omaha Community Playhouse), and Magenta in five productions of The Rocky Horror Show (PART, Omaha Community Playhouse, Rave on Productions 3x!). Erika also sings in local bands The Damones (come see us at The Waiting Room December 30!) and Bennie and the Gents (with her husband, Benn Sieff). Enjoy the show!



### **Theresa Sindelar - she/her - Karl**

A veteran of the local theater community, Theresa's last Omaha theater experiences have been... almost so long ago it's hard to remember. She was in *Howie D: Back in The Day* at the Rose Theater in January 2020 and most recently she was a *Fate* in Ollie Webb's production of *Dionysia: Three Greek Myths*. Theresa has been in dozens of shows in the metro area and has been honored to receive many awards for her roles. Some of her favorite shows have been *Hummingbird*, (which was featured in the 2019 Omaha Fringe Festival), *Mack and Mabel*, *Urinetown*, *The 25th Annual Putnam County Spelling Bee*, *Parallel Lives*, *Every Christmas Story Ever Told*, and *Batboy*. Theresa has toured with a *Christmas Carol*, done commercials and is on IMDB for her cartoon voice work. She has done some stuff. Good for her. Venmo: TheresaSindelar8



### **Kerron Stark - he/him - Argyle, Theo**

Kerron Stark is a local actor, musician, and entrepreneur. He is the creator and host of Omaha's only live-action, educational, preschool series, "*Mister K's Clubhouse*" which is currently airing its third season. He has been in many productions with theaters in the community, including: *Radio Theatre*, *SNAP Productions*, and *The Chanticleer*. This is his third time on the BLUEBARN stage, appearing in the previous *Die Hard* runs. Kerron believes that if you follow your dreams and work hard, you will be simply amazing.

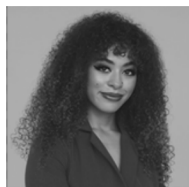


### **Hughston Walkinshaw - Hans Gruber**

Hughston is a founding member of the BLUEBARN Theatre for which he has served as both actor and director. He is thrilled to be a part of BLUEBARN's 35th Anniversary Season and to reprise the role of Hans Gruber for this 3rd production of *A Very Die Hard Christmas* (OEAA Award - Supporting Actor). Among numerous BLUEBARN acting credits, his favorites include *Every Brilliant Thing*, *Orphans*, *Reform School Timmy!*, *The Night Larry Kramer Kissed Me* (TAG Award - Lead Actor), *The Pillowman* (OEAA Award - Lead Actor), *Waiting for Godot*, *Spring Awakening - The Musical*, and *The Dresser* (TAG Award - Lead Actor). Other acting credits include *The Normal Heart* (SNAP Productions, Omaha); *Treasure Island*, *Amelia Bedelia*, *Charlotte's Web* (Rose Theatre, Omaha); *Cinderella* (Ballet Omaha); *Tell Tale Electric Poe*, *Chitty Chitty Bang Bang!* (Coterie Theatre, Kansas City); *The Homecoming*, *Mappa Mundi*, *The Crucible*, *Galileo* (MET, Kansas City); *A Christmas Carol* (NTC Productions National Tour); *5000 Nights* (NYC International Fringe Festival); *Nureyev's Eyes* (American Stage, St. Petersburg FL). Film and Television credits include *The Outsiders*, *O! Pioneers*, *The Indian Runner*, *omaha (the movie)*, *Powerslide* and assorted commercials, industrials, and voiceovers. He currently plays 'Pickle Pop Pops' in the Web Series *Mr. K's Clubhouse* created by fellow *Die Hard* cast member Kerron Stark. Hughston earned his BFA in Theatre from the State University of New York - Purchase, NY.







### **Nina Washington - she/her - Holly Gennero**

Nina is thrilled to return to the BLUEBARN after last appearing as Ashlee in Dance Nation. She was previously seen at BLUEBARN in Sunset to Starlight: A Musical Cabaret. Past theatre credits include Cathay in the Benson Theatre/BLUEBARN Theatre collaboration of Six Guns Runnin', Dreamgirls at the Omaha Community Playhouse, Cheryl in Stick Fly (OCP) (OEAA winner), Janet in The Rocky Horror Picture Show (Rave On! Productions), Don't Stop Me Now: A Celebration of Rock Musicals (Rave On! Productions), and Opera Omaha's production of Sweeney Todd. Nina loves cooking, baking and loves to spend time with her cat, Benny.



### **Diane Watson - she/her - Ginny, Ensemble**

Diane is thrilled to be back in the best Christmas story ever, Die Hard! Her other favorite hat trick was Five Women Wearing the Same Dress, performed twice here at the BLUEBARN. She's also had fun in many shows at the Playhouse, Shelterbelt and SNAP. You can see Diane in an episode (The Hole) of the series The Dead Hour streaming on Amazon Prime. You can also check out her free YouTube cooking show, Leftover Chef, where she helps viewers save money and the planet by transforming leftovers into tasty new dishes. Diane dedicates her performance to the best woman she ever knew, her mom Jean.



### **Wai Yim - he/they - Joseph Takagi**

Wai Yim is an actor/ director/ choreographer/ playwright. He directed THE CHINESE LADY here at BLUEBARN's last season and will return to direct Lauren Yee's THE GREAT LEAP in 2024. Wai last appeared in Mary Zimmerman's The Notebooks of Leonardo da Vinci at the Goodman Theatre, which toured to Shakespeare Theatre Company in D.C. and The Old Globe in San Diego. Chicago credits: A Christmas Carol, The White Snake, The King of Hell's Palace, Postnation and King of the Yeas (Goodman Theatre); Chimerica (TimeLine Theatre); ZAC EFRON (Token Theatre). Regional credits: Mary Zimmerman's The White Snake (The Old Globe, McCarter Theatre, Wuzhen Theatre Festival in China); The Oldest Boy (Unicorn Theatre); Nomad Motel (Horizon Theatre Company); In Omaha, he's worked with The Rose, BLUEBARN, Omaha Playhouse, SNAP!, Shelterbelt, Nebraska Shakespeare, and Nebraska Theatre Caravan. Film: North of the 10, Fatal Influence: Like, Follow, Survive. TV: Work in Progress, Power Book IV: Force, neXt, Chicago PD, The Chi, Patriot. Social medias: @whyym



# CREATIVE BIOS

## **Melanie Epps - she/her - Choreographer**

As a theatrical choreographer, Melanie's work has been seen in local productions of Spamalot, Shrek, School of Rock, Young Frankenstein, Mamma Mia!, Legally Blonde, Altar Boyz, Little Women, Caroline, or Change, Evil Dead: The Musical, The Producers, and Sister Act. As a performer, favorite roles include Eva Peron (Evita), Aida (Aida), Velma Kelly (Chicago), Cassie (A Chorus Line), Judy (9 to 5), Lucy Harris (Jekyll and Hyde), Mary Magdalene (Jesus Christ Superstar), The Narrator (Joseph and the Amazing Technicolor Dreamcoat), and the Lady of the Lake (Spamalot). At the BLUEBARN, her choreography has been seen in productions of Dance Nation, Sunrise to Sunset, Priscilla Queen of the Desert, A Very Die Hard Christmas, and Indecent.

## **Ezra Colón - Fight Choreographer**

Ezra Colón is an Actor, Director, and Teaching Artist now based in Omaha who was last seen on the Bluebarn stage in Indecent. This is now his third time as Fight Choreographer for A Very Die Hard Christmas and he loves it every time! He directed the fights this summer for Shakespeare on the Green and directed Othello On Tour for Nebraska Shakespeare. Prior to moving to Omaha, he directed A Midsummer Night's Dream On Tour for Nebraska Shakespeare; The Telling Project: Albuquerque, The Jungle Book, and The Drunken City for Duke City Repertory Theatre in Albuquerque, NM and directed FROSTY and The Frog Prince for the Barter Players in Abingdon, VA. As an actor, some of his favorite plays include Indecent (Avram), The Call of the Wild (Buck), Julius Caesar (Mark Antony), The 39 Steps (Clown 1), Oedipus the King (Oedipus), The Full Monty (Dave Bukatinsky), Frankenstein (Dr. Frankenstein), and King Lear (The Fool). He has a B.F.A. in Theatre Performance from Columbus State University.

## **Madelyn Hubbard - she/her - Stage Manager**

Madelyn is an arts manager and theatre professional in Omaha, Nebraska, where she was born and raised. Madelyn truly loves the arts. Being a part of the process from the first design meeting to taking down the last piece at strike is what drives her every day to become a better professional. @lilmisshubbard

## **Craig Lee - he/him - Scenic Artist**

Mr. Lee has lived in the Midtown area of Omaha since 1985. His work has appeared on virtually every local live theatre stage since then, as well as in movies, television, and publications. He has worked with the finest designers in the area on countless shows and has painted indoor and outdoor murals all over Omaha. At his studio he has completed commissioned paintings, drawings, and production designs. He has taught scenic painting and worked with students on many university productions. He has proudly supported and collaborated with BLUEBARN Theatre for much of its existence and is extremely fortunate to call the talented, passionate professionals who work here some of his very best friends.

## **Mindy Cotner - Sound Board Operator**

Mindy has been involved in Omaha-area theater since age 11, first appearing onstage as Lullaby League #2 in a production of *The Wizard of Oz*. After earning a B.F.A from the University of Nebraska Omaha Writer's Workshop, she came to roost in technical theater and discovered the joys of working on the "dark side." Favorite productions in her 18 seasons with BLUEBARN include *The 39 Steps*, *Spring Awakening*, and *Every Brilliant Thing*. She has also worked on several productions with the Ollie Webb Center's Art of Imagination, appearing onstage as the Banshee and Selkie Queen in *Fear Liath*, and running follow spot for *The White Gander* and *Morozko*.

# RESIDENT CREATIVE BIOS

## **Susan Clement - She/Her - Producing Artistic Director**

Susan has served as BLUEBARN's Producing Artistic Director since 2002. She has directed numerous productions at the BLUEBARN, beginning with *The Night Larry Kramer Kissed Me* in 1993. OEAA Awards – Best Director: *Red Summer* (2020), *Indecent* (2019) *The Resistible Rise of Arturo Ui* (2018), *Our Town* (2015), *39 Steps* (2013), *Spring Awakening* (2012), *Seascape* (2008); Best Play - *Our Town* (2015), *Red* (2013), *The Pillowman* (2006). As director of the BLUEBARN, Susan alongside Shannon Walenta (Managing Director at the time) spearheaded the capital campaign that enabled the BLUEBARN to build its own stand-alone theater, and saw the dream fulfilled when BLUEBARN moved into its new home at 10th and Pacific in 2015. Susan holds a B.F.A in Theatre/Film from the State University of New York at Purchase Conservatory.

## **Amy Reiner - She/Her - Director of Production & Props Designer**

Amy joined the BLUEBARN in 2012 as Production Manager and Properties Master. Amy went to college at the University of Nebraska-Lincoln where she received a B.F.A in technical theatre with an emphasis on Scenic and Lighting Design. After leaving Lincoln, she spent three years freelancing in Los Angeles in the fields of film and television. Returning to her hometown of Omaha in 2000, she worked as Properties Master for 12 years at The Omaha Community Playhouse where some of her favorite shows were *Violet*, *The Battle of Shallowford* and *The Fantasticks*. Some of Amy's favorite BLUEBARN shows include *Red*, *American Buffalo*, *the 39 Steps*, and *A Very Die Hard Christmas!*. In her free time Amy enjoys volunteering at a few places including HETRA, a Gretna based equine therapy program. She especially loves her fur children Ethel, Norman, Pearl and Rose, as well as her goldfish Elmer Fudd and Sylvester.

## **Bill Kirby - He/Him - Technical Director & Sound Designer**

Bill joined the BLUEBARN staff as the Resident Creative and Technical Director in 2019, after working as a freelance designer for the two previous seasons. Favorite BLUEBARN productions include *Venus in Fur*, *Wakey, Wakey*, *Indecent* (OEA Award for Outstanding Sound Design), and *Red Summer* (OEA Award). Before relocating to Omaha in 2017, Bill spent 10 years as the resident sound designer and head sound engineer at Princeton University's McCarter Theatre Center. Bill's favorite McCarter productions include sound designing the original workshop production of Danai Gurira's *Eclipsed* and serving as the production sound engineer for the world premiere of Christopher Durang's *Vanya and Sonia and Masha and Spike*, which would go on to win the 2013 Tony Award for best play. Kirby has worked nationally and internationally, including productions at the New York Fringe Festival, LA's Kirk Douglas Theatre, the Wuzhen Grand Theatre in China, and the Repertory Theatre of St. Louis. Bill is a graduate of the Royal Welsh College of Music and Drama. Web: [kirbysound.live](http://kirbysound.live)



## **BLUEBARN Staff**

**Susan Clement**

Producing Artistic Director

**Erika Sieff**

Managing Director

**Amy Reiner**

Director of Production & Properties Master

**Heather Hoyt**

Director of Development and Marketing

**Bill Kirby**

Resident Creative & Technical Director

**Sydney Readman**

Front of House / Box Office Manager &  
Community Connector

**Madelyn Hubbard**

Resident Stage Manager

**Francisco Franco**

Production Assistant / Rentals Manager

**Jimmy Nguyen**

Graphic Designer & Community Connector

**Marti Baumert**

Bookkeeper

## **BLUEBARN Board**

**Devin J. Fox, MD**, President

**Robert Peters**, Treasurer

**Laura Peet Erkes**, Secretary

**Ethan Bondelid**

**Jannette J. Davis**

**Sara Foxley**

**Sara McClure**

**Jim McKain**

**Michael Walenta**

**Susan Clement** (ex-officio)



Facebook.com/BLUEBARN

@bluebarntheatre\_omaha



@bluebarntheatre

@bluebarn.theatre



**Al Marcault**

**Omaha Beef**

**Millard Lumber**

# BLUEBARN Theatre

## Season Contributors

July 1, 2022 - November 1, 2023

### INSTITUTIONAL GIVING

#### **\$25,000+**

Douglas County  
Holland Foundation  
Shubert Foundation  
The Fred and Eve Simon Charitable Foundation

#### **\$10,000-\$24,999**

First National Bank  
Great Plains Theatre Commons  
Mammel Foundation  
Mutual of Omaha  
Nebraska Arts Council  
Omaha Steaks International

#### **\$5,000-\$9,999**

Anonymous  
Boomer Radio  
Gilbert M. and Martha H. Hitchcock Foundation  
Metro Community College  
metroMAGAZINE  
Valmont Industries, Inc.  
Whitmore Charitable Trust

#### **\$1,000-\$4,999**

Big Muddy Workshop, Inc.  
Bluestem Prairie Foundation  
DJ Sieff Style Entertainment  
Dundee Bank  
Fizzy's  
Giger Foundation  
Highline Warren  
Millard Lumber  
Saro Cider Omaha  
Sips on 10th  
The Brownie Bar Omaha

#### **\$10-\$999**

AmazonSmile Foundation  
Community Foundation for Western Iowa  
Fashion Cleaners  
Lumen Beer Co.  
Marti CPA LLC  
Network For Good  
PayPal Giving Fund  
Upstream Brewery  
US Bank

### INDIVIDUAL GIVING

#### **Visionaries (\$15,000+)**

Rob Block and Devin Fox  
Sandi and Bill Bruns  
Bruce Reneaud and Kerry Dobson

#### **Masterminds (\$10,000-\$14,999)**

Marilyn Fox  
Amy Haddad and Steve Martin  
Carter and Vernie Jones

#### **Innovators (\$5,000-\$9,999)**

Jannette Davis  
Sara Foxley  
Rich and Fran Juro  
Ray Kawaguchi and Nancy Gilliland  
Laura Peet Erkes and Cory Erkes  
Emily Kean Puccioni and Ron Widman  
Annette and Paul Smith  
Jim and Susan Tracy  
Tim Wilson and Dr. Katie Weitz

#### **Renegades (\$2,500-\$4,999)**

Jill Anderson

#### **Rebels (\$1,000-\$2,499)**

Anonymous  
Ethan and Susan Bondelid  
Scott Carollo  
Coleen Duda  
Ruth H. Keene  
Leslie A. Kuhnle and James Somers  
Lou and Pat Lamberty  
Dave Steadman and Sara McClure  
Ryan and Rebecca McCreery  
James and Kathy McKain  
Don and Rita Otis  
Richard and Mary Parrish  
Robert and Barbara Peters  
Ben and Mel Teply  
Shannon and Mike Walenta  
George Wimmer and Ann Beckenhauer  
Jay Worden and Timothy Held



# BLUEBARN Theatre

## Season Contributors

July 1, 2022 - November 1, 2023

### Trailblazers (\$500-\$999)

Duane and Clare Baylor  
Robin Behlers and Paul Mileris  
Tony and Claudia Deeb  
Dan Gallagher and Jeff Grinnell  
Kim Jubenville  
Howard and Gloria Kaslow  
George Kleine and Tom Knox  
Sue A. Lawson  
John and Renee Lillard  
Alan Meyer  
James and Bobbie  
Montequin  
Duncan and Rozanne  
Murphy  
Bradley Perry  
Emily Tonniges

### Groundbreakers (\$100-\$499)

Bill and Barb Anderson  
Angela Barry  
Trish Battaglia  
Doug and Liz Bisson  
Marvin J Bittner  
Cathy Blake  
Katie Blesener and John  
Royster  
Amy and Dennis Boesen  
Amy Bones  
Amanda Boyle  
Stephen and Anne Bruckner  
Arlene Burianek  
Leanne Carlson  
Kent Clark  
Susie and Dennis Collins  
Timothy and Rachel Combs  
Charity Conkle  
Tricia Cottrell  
Josh Cox and Josh Point  
Barbara Dahlhauser  
Michael Davidian  
Susan and David Davies  
Jeff Day  
Jesse and Katie DePriest  
Anne Dey  
Benjamin Dey  
Jeff Dickinson  
George and Barbara Douglas  
Pete Eckerman and Sarah  
Wengert  
Lori Ecklebe and Tom Shomaker  
Ron and Mary Ferdig  
Paige and Pete Festersen  
Terry and Mollie Foster  
Christopher and Lisa Fox

Duane and Jacqueline Fox  
Renee and Douglas Fox  
Kay Friesen  
Linda Gjere  
Caron Gray  
Megan Green  
M. Kathryn Gross  
Ellen Hargus  
Betty Harris  
Constance Heiden  
Nancy Hemmingsen  
Shari Hofschire  
Durell Kidd and Ray Hogan  
Nancy Hornstein  
Madelyn Hubbard  
Catherine and Stephen Jesus  
Julie Livingston and Dwight  
Johnson  
Mary and Doug Johnson  
Julie Kaminski  
Ray Wood and Mary Keitel  
Steve Kenyon and Mary  
Stolinski  
Birgit and Jimmy  
Khandalavala  
Jennifer Kinney  
Julia and Joseph Knezetic  
Lynn and Maria Knudtson  
Debbie and Steve Krambeck  
Craig Kramer  
David and Vicki Krecek  
Marie and Jack Kubat  
Craig Kukuk and A.T. Miller  
Barbara and Marshall  
Kushner  
Stacie Lamb and John  
Christensen  
Laurie Lambert  
Dale and Toni Larsen  
Guy and Dorothy Lawson  
Lyn and Natalie Leach  
Richard and Norma LeClerc  
William Liebermann  
Alice Lindsay  
Patricia Lontor  
Mark Manhart and Bonnie  
Gill  
Wayne and Karen Markus  
Karen and Michael Markey  
Gerald McAndrew  
M E McDaniel  
Amy McGaha  
Cathy McManus  
Steve and Jeanne Miller  
Steve Mohr  
Lynne Mytty

Karen and Larry Nelsen  
Diana Nevins  
Patty and Steve Nogg  
Robert Ottemann and Kim  
Kalkowski  
Tanya Patry  
Rosemary Pauley  
Bruce and Deanna Plath  
Jerry and Elizabeth Powell  
Kathleen Rettig  
Jill Rizzo and Brian Wetjen  
Debra Romberger  
Larry Salinas  
Amy Sand  
Jo Ann Schmidman  
Mark Schulze  
Luan and Jeffrey Scott  
Todd and Betiana Simon  
Jill Slupe  
Randy Mousel and Stephen  
Smith  
Joan Squires  
Thomas Stalnaker  
Mary Eileen Stark  
Joni and Jason Street  
Mary Stultz  
Gregory Swanson  
Erica Sweany  
Tony and Christine Swerczek  
Steve Hutchinson and Susan  
Thomas  
Molly Toberer  
Katie Twit  
Bob Sievers and Brad Tyson  
Tom and Sue Weidner  
JD Welch  
Tracy and John Wells  
Sadi Vila and Fajardo Ximena

### Radicals (\$10-\$99)

Tim and Phyllis Adams  
Deb Ady  
Ronald Alexander  
Greg Andersen  
Daryl Anderson  
Anonymous  
Susanne Astley  
Michael and Janelle Baber  
Kevin Barratt  
Gary and Eileen Bates  
Benjamin Beck  
Gregg and Pam Beeman  
Karen Bluvass

# BLUEBARN Theatre Season Contributors

July 1, 2022 - November 1, 2023

William Bucy  
April Butterfield  
Ashley Byars  
Daniel and Diana Byrd  
Jim and Anne Carroll  
Kay and Bernie Clark  
Virginia Collins  
Paula Cope  
Diane Crouch  
Dr. Debra Reilly and Bob Culver  
George H Curry  
Erin Dahlke  
Stephen and Suzan DeCamp  
Ricardo Delgado  
Marty and Helen Desilets  
Dan Dixon  
Linda Duckworth  
Peggy Dunn  
Steve Ellefson and Chris Rix  
Myrna Esluer  
Ronald and Mary Filipowicz  
Alan and Cordie Fisher  
Betty Foster  
Krista Freimuth  
Bill Gaus  
Rodger Gerberding and  
Kathy Jurgens  
Marilyn Gillen  
Rose Glock  
DeWayne Greim  
Scott Groth  
Cynthia Hadsell  
Gary and Jane Hagebush  
Elizabeth Hallgren  
Hair For You Inc. John  
Davison & Ron Hansen  
Cathy Hanson  
Tony Hartzell  
Julie Hewett  
Kari Hilliard  
Ida Holliday  
Gail Houghton  
Nancy Huston  
Stephanie and Dave Jenkins  
Gloria Jensen  
Susan Johnson  
Dick and Linda Johnson  
Michaela Johnson  
Ann Johnson  
Michaela Kanoski  
Mary Kelly  
Pat and Andy Ketterson  
Susan Kimball

William Kingston  
Merlyn Knudson and James  
Davis  
Gary Kudym  
Dan Miller and Ken Larose  
Mary-Lu Larson  
Kevin Lawler  
Pat and Bruce Little  
Anna Maio  
Moira J. Mangiameli  
Ross and Jill Manhart  
Natalie Manley  
Elizabeth McInerney  
Lucia Milone and William  
Dittrick  
Maureen Mitchell  
Hope Mock  
Rachel Moody  
Bobbie and Bruce Moore  
Betty Morar  
Ruth Muchemore  
Howard and Lee Needelman  
Michael and Linda Nichols  
Margaret Niebling  
Devon Niebling  
Gail and Nancy Nielsen  
Beth Nodes  
Kerri O'Connell  
Beth Ostiek Smith  
Dennis Owen  
Beth Paprocki  
Michael Pflueger  
Sara Pirtle  
Thomas Purcell  
Elizabeth and Robert Recker  
Julie Ryan  
Jeanne and Pat Salerno  
Jason and Tammy Sealer  
Melissa Seffens  
Chris Shonka  
Martin and Aveva Shukert  
Erika Sieff  
Kendall Ziebarth & Myron  
Sikora  
Cathy Solarana  
Megan Sorensen  
Steve and Audrey Spence  
Kathleen Stage  
Marian Standeven  
Aaron Stovall  
Cathy Tauke  
Kevin Thompson  
Mary Thomsen

Carol Schmid & Jerry Toll  
Scott Van Den Top  
Catherine Walling  
Valerie Ware  
Lindsay Weddle  
Don Westling and Jo  
Bartikoski  
Mary Wiedman  
M. Eugene Williams  
Ron Wilson  
Dave Wingert  
Keith and Lisa Winton  
Karen Wittler  
Scott Working  
Emily and Kirk Wynn

## MEMORIALS & TRIBUTES

In Memory of...

Outdoor Greenspace  
Lighting Dedicated in  
Memory of "Skip" Blazek  
The Giger Foundation

In Honor of...

The Marriage of  
Devin Fox and Rob Block

Holly Babitzke  
Gary and Eileen Bates  
Jack Becker and Lester Katz  
Sue and Mike Borg  
April Butterfield  
Charity Cockle  
Christopher Cook  
Josh Cox and Josh Point  
Bud Fox and Pat Reddish  
Dave and Darlene Greer  
Scott Groth  
The Grasz Family  
Aaron Gschwandegger  
Kaye Gurss  
Natalie Manley  
Amy de Meules  
Bruce and Bobbie Moore  
Jeanette Obal  
Butch and Kathy Roberts  
Dan and Jim Schmit  
Shelly Stark  
Joni and Jason Street  
Peg and Barry Taylor  
Emily Tonniges  
Chris and Pam From Five-Oh Block

# SEASON 35 PRODUCERS

BLUEBARN celebrates its Season Producers that SPARK,  
our 35th year of kick-ass theater!

**Season Producers** are patrons who have made contributions in addition to their TruBLU memberships. The donations we receive above and beyond our ticket sales and subscriptions are vital to BLUEBARN's artistic success, and to the livelihoods of the artists responsible for that success. Thank you for believing in our work and supporting professional theatre in Omaha.

Tim and Phyllis Adams  
Ronald Alexander  
Anonymous  
Gregg and Pam Beeman  
Doug and Liz Bisson  
Cathy Blake  
Daniel and Diana Byrd  
Leanne Carlson  
Kay and Bernie Clark  
Andrew and Mary Helen Cockle  
Paula Cope  
Diane Crouch  
Dr. Debra Reilly and Bob Culver  
Stephen and Suzan DeCamp  
Ricardo Delgado  
Dan Dixon  
Linda Duckworth  
Steve Ellefson and Chris Rix  
Alan and Cordie Fisher  
Krista Freimuth  
Bill Gaus  
Rose Glock  
Dan Gallagher and Jeff  
Grinnell

Gary and Jane Hagebush  
Elizabeth Hallgren  
Cathy Hanson  
Nancy Hemmingsen  
Durell Kidd and Ray Hogan  
Ida Holliday  
Gail Houghton  
Stephanie and Dave Jenkins  
Dick and Linda Johnson  
Emily Kean and Ron Widman  
Ruth Keene  
Ray Wood and Mary Keitel  
Susan Kimball  
Leslie A. Kuhnelt and James Somers  
Dan Miller and Ken Larose  
Mary-Lu Larson  
Guy and Dorothy Lawson  
William Liebermann  
John and Renee Lillard  
Pat and Bruce Little  
Patricia Lontor  
Steve and Jeanne Miller  
Lucia Milone and William Dittrick  
Maureen Mitchell  
James and Bobbie Montequin  
Bobbie and Bruce Moore  
Betty Morar

Lynne Mytty  
Karen and Larry Nelsen  
Diana Nevins  
Kerri O'Connell  
Beth Ostiek Smith  
Robert Ottemann and Kim  
Kalkowski  
Rosemary Pauley  
Robert and Barbara Peters  
Thomas Purcell  
Kathleen Rettig  
Jeanne and Pat Salerno  
Randy Mousel and Stephen  
Smith  
Kathleen Stage  
Thomas Stalnaker  
Steve Kenyon and Mary  
Stolinks  
Cathy Tauke  
Mary Thomsen  
Katie Twit  
Don Westling and Jo Bartikoski  
Mary Wiedman  
Jay Worden and Timothy Held

# THE ARTISTS' FUND

EST. 2009

At BLUEBARN we believe that artists should be honored for their work not only with applause but with a paycheck. We believe that every theatre artist deserves to be paid fairly for their work, and we are committed to providing payment to every actor or artist working in our theatre. To honor this commitment, BLUEBARN established The Artists' fund in 2009, to support the creative spirits who help continue and propel the life of the BLUEBARN.

We recognize the following donors who have made contributions to The Artists' fund, and we'd like to add your name to this list! If you would like to contribute, please email Heather Hoyt at [hhoyt@bluebarn.org](mailto:hhoyt@bluebarn.org), or donate online at [www.bluebarn.org](http://www.bluebarn.org).

## Anonymous

Elias Adams

Deb Ady

Ronald Alexander

Vicki and Steven Allely

Keith Allerton and Becky

Noble

Bill and Barb Anderson

Cara Anderson

Judy Archer

Dean Arkfeld and Peggy

Reinecke

Barbara Armstead

John Ashley

Tony and Susan Awender

Barbara Bakhit

Kevin Barratt

Betty L. Beach

Benjamin Beck

Carl Beck

Thomas and Lee Belford

Gerry Beltz

Paul Bennett

Bob Benzal and Gerry

Sullivan

Sam Bertino

Doug and Liz Bisson

Big Muddy Workshop

Katie Blesener and John

Royster

Jan Blosser

Bluestem Prairie Foundation

Karen Bluvas

Amy and Dennis Boesen

Amy Bones

Dana and Patricia Bradford

MaryLee Brock

Christina Broekemeier

Jeanne Brown

Stephen and Anne Bruckner

Sandi and Bill Bruns

Catrice Bryson

William Bucy

Jean Burggraf

Arlene Burianek

Char Bush

Larry Carlson

Leanne Carlson

Debbie Carman

Jim and Anne Carroll

Jeff Carstens DDS

Maria Caskey

Pamela Chase

John Christensen and Stacie

Lamb

Kay Clark

Anthony and Kim Clark-

Kaczmarek

Babe Cohn

Susie and Dennis Collins

Timothy and Rachel Combs

Bruce and Marsha Congdon

David Corbin and Josie

Metal-Corbin

Mindy Cotner

Tricia Cottrell

Curb Appeal Salon and Spa

Janey Dann

Mary and Kurt Davey

David Davidson

Susan and David Davies

Thatcher Davis

Philip Dawson

Jeffrey Day

Mary Deak

Ricardo Delgado

John and Carol Dennison

Marty and Helen Desilets

Jeff Dickinson

Jaclyn DiGiacomo Oltmans

DipJar Donations

Alan Dorn

Terry Doughman

Linda Duckworth

Tiffany Dunagan

Peggy Dunn

Maguerite Dunn

Pete Eckerman and Sarah

Wengert

Steve Ellefson and Chris Rix

Myrna Esluer

Teri Fender

Ron and Mary Ferdig

# THE ARTISTS' FUND

EST. 2009

Liz Fleissner	Shari Hofschire	Ashley Kobza
Sherry Fletcher	Bob Hoppe	Susan Ann Koenig
Benjamin Floyd	Andrea Howard	Karen Krall-Murphy
Jesse and Eileen Fonseca	Jacqueline Hoyt	Debbie and Steve Krambeck
Betty Foster	Julie Huff	Craig Kramer
James Fowler	Debra & Richard Humble	Michael Kreikemeier
Rob Block and Devin Fox	Richard A. Hunt	Gordon Krentz
Christopher and Lisa Fox	John and Nancy Hurley	Shane Krzycki
Marilyn Fox	John and Laura Iliff	Marie and Jack Kubat
Sara Foxley	Catherine Ingalls	Leslie A. Kuhnel
Leslie Frederickson	Joanie Jacobson	Barbara and Marshall Kushner
Nathan Frey	Stephanie Jacobson	Lou and Pat Lamberty
Darrel Frisch	Lynette Anthony and Donna James	Andrea Lang
Bill Gaus	Chris Janicek	Kathy Larimer
Kristine and Jared Gerber	Grace Janiszewski	Dale and Toni Larsen
Rodger Gerberding and Kathy Jurgens	Gloria Jensen	Kevin Lawler
Charlie Gill and Beth Molloy	Ann Johnson	Sue A. Lawson
Rose Glock	Kay Johnson	Patricia Leaman
Susan Goldsmith	Michaela Johnson	Connie Lee
Jeff and Danielle Gorman	Mary and Doug Johnson	Gina Leonardo
DeWayne Greim	Todd Johnson	Karen Levin
Bobby and Allison Grennan	Nakia Johnson	Alice Lindsay
Margaret Grennan	Carter and Vernie Jones	Pat and Bruce Little
Dan Gallagher and Jeff Grinnell	Cheri Jones	Patricia Lontor
M. Kathlyn Gross	Coulter Jones (In honor of Vernie and Carter Jones)	Marc Lowe
Haley Haas	Kim Jubenville	William and Constance Lowndes
Howard and Carol Hahn	Rich and Fran Juro	Marya Lucca-Thyberg
Daniel Hamann	Sissy Silber	Mammel Foundation
Mary Hamilton	Nate Kaufman	Don and Maureen Mangan
Jeni Hamlin	Steve Kenyon and Mary Stolinski	Moir J. Mangiameli
Ellen Hargus	Mary Kerr	Ross and Jill Manhart
Kimberly Harris	William and Maureen Kessler	Mark Manhart and Bonnie Gill
Michael and Leslie Harsh	Jimmy Khandalavala	Karen and Michael Markey
John Hartigan	Bill Kirby	Doug and Laura Marr
Constance Heiden	George Kleine and Tom Knox	Dennis Martin
Nancy Hemmingsen	Mogens Knudsen	Mele Mason
Team Hesse	Merlyn Knudson and James Davis	Gerry and Christy McAndrew
Mark Hewett		Gerald McAndrew
Denise Hill		Corey McCallan
Kari Hilliard		Teri McCarthy
		Deb and John McCollister



# THE ARTISTS' FUND

EST. 2009

Ryan and Rebecca

McCreery

M E McDaniel

George and Carolyn

McDonald

Dede McFayden-Donahue

Amy McGaha

James and Kathy McKain

Lauren Medici

R & D Nicklin Memorial

Charity Fund Drive

Alan Meyer

Steve and Jeanne Miller

Steve Mohr

James and Bobbie

Montequin

Sue Moskovits

Barbara Motes

Ruth Muchemore

Joshua Mullady

William and Patricia Munro

Marie Murphy

Lynne Mytty

Carrie Nath

Karen and Larry Nelsen

Megan Neville

Diana Nevins

Mary Newman

Devon Niebling

Margaret Niebling

Roxanne R. Nielsen

Gail and Nancy Nielsen

Amy Niles

Helen Nosov

Thomas O'Brien

Kerri O'Connell

James Ogden

Carolyn Owen Anderson

Richard and Mary Parrish

Brigid Payton

Pauline Pechnik

Gail and Mervin Peck

Grant Pedersen

Laura Peet Erkes and Cory

Erkes

Bob Perrin

Bradley Perry

Peter Kiewit Foundation

Deb Peterson

Michael Pflueger

M. Michele Phillips

Amber Phillipsen

Westley Pierce

Jim and Kathleen Piper

Bradley and Sara Point

Cecilia Poon

Jerry and Elizabeth Powell

Francie Prier

Thomas Purcell

Caitlin Purcell

Kori Radloff

Ruth Rath

Elizabeth and Robert

Recker

Leslie Regan

Pegeen Reilly

M Jean Reiner

Bruce Reneaud and Kerry

Dobson

Therese Rennels

Doug Rennels

Barbara Rennett

Anonymous

Robin Richards

The Fred and Eve Simon

Charitable Foundation

Anne and David Rismiller

Christina and Carl Rohling

Marti Rosen-Atherton

John Rosman and Rod

Carlson

Sky Rotert

Susan Rothholz

Sara Rueschhoff

Donald Ruleaux

Carol and Rick Russell

Jeanne and Pat Salerno

Eric Sauvage

Deborah Savadge

Tony Schik

Jo Ann Schmidman

Jeffrey Schweid

Judy Schweikart

Richard Scott

Greg Searson

Betty Segell

Margaret Semin

Theodore Sewell

Shelly Shannon

Robert Sharp

Jeanne Shelton

Chris Sheridan

Chris Shonka

Martin and Aveva Shukert

Mark Siano

Myron Sikora

Michele and Peter Silberstein

Ronda Simpson

Marty Skomal

Sandra Smiley

Annette and Paul Smith

Laurie Smith Camp

Susie and Stuart Smoler

Brent Spencer and Jonis Agee

John and Sandy Spessard

Joan Squires

Thomas Stalnaker

Mary Eileen Stark

Meghann Stewart

Jean Stillmock

Kristine Stirn

Erin Strasil Larson

Sara Strattan

Mary Stultz

Heider Family Foundation

Erica Sweany

# THE ARTISTS' FUND

EST. 2009

Bronson Sweet  
Tony and Christine Swerczek  
Analisa Swerczek  
Jeff and Sherry Taxman  
Steve Hutchinson and Susan Thomas  
Suzanne Titus  
Molly Toberer  
Judy Torrens  
Jim and Susan Tracy  
Dorothy and Dean Tuma  
Kent and Linda Tyler  
Jenny Pullen and Karol Ulmer  
Robert Urbinati  
Quincy Valencia  
The Vallier Family  
Bill VanDeest and Carol Wisner  
Scott Van Den Top  
Ann M. Van Hoff

Gail and Irv Veitzer  
Thomas and Jennifer Vinton  
Christopher Violet  
Judd and Pat Wagner  
Madeline Wahl  
Shannon and Mike Walenta  
Kathleen Walenta  
Diane and Julie Walker  
Hughston Walkinshaw  
Paula Wallace  
Diane Watson  
Tom and Sue Weidner  
Kate and Roger Weitz  
Weitz Family Foundation  
Janet West  
Don Westling and Jo Bartikoski  
Mary Wiedman  
Tammy and John Williams  
M. Eugene Williams  
Nancy Williams

Lucia Williams and William Ditrack  
Stephen Williams  
George Wimmer and Ann Beckenhauer  
Dave Wingert  
Keith and Lisa Winton  
Jackee Wise  
Diane Withem  
Karen Wittler  
Casey Wood  
Jay Worden and Timothy Held  
Scott Working  
Aaron Wrigley  
Deborah Wyatt  
Patrick Wyman  
Robert Yazowski  
Charlotte Young  
Damian Zuerlein  
Amy and Tim Zweiback



## WISH LIST

SUN SHADES

BIG OUTDOOR FANS

AMAZON WISH LIST AT THE QR CODE



THE BLUEBARN THRIVES THANKS TO THE GENEROUS FINANCIAL  
SUPPORT OF OUR FRIENDS AND CONTRIBUTORS.



TO MAKE A DONATION, CONTACT HEATHER HOYT  
AT 402.345.1576 X 6 OR [HHOYT@BLUEBARN.ORG](mailto:HHOYT@BLUEBARN.ORG).  
DONATE ONLINE AT [BLUEBARN.ORG/DONATE](http://BLUEBARN.ORG/DONATE)

# BLUEBARN THEATRE THE ARTISTS' FUND

EST. 2009



35TH ANNIVERSARY  
SEASON \*SPARK\*  
1989 - 2024

Artwork by Sarah Rowe

As a special Thank You,  
Year-end donors of  
\$35 or more  
will receive a Sarah Rowe  
35th Anniversary Season  
Art vinyl decal

*"The transformative power of theater cannot exist without actors. Professional actors deserve compensation for their work. If you have not already, please consider making a donation or recurring gift to The Artists' Fund."*

- Amy Haddad and Steve Martin, BLUEBARN Patrons

## DOUBLE YOUR IMPACT

Thanks to the generosity of Amy Haddad and Steve Martin, all gifts made to The Artists' Fund will be matched dollar for dollar through December 31st 2023 up to \$10,000.

Dear BLUEBARNER,

From our earliest days in Omaha, BLUEBARN has been on a mission to create and share productions that will spark connection, communion, and community. We do this not only by selecting the finest scripts that we can find, but also by employing extraordinary talent to bring those scripts to life.

We launched our Artists' Fund over a decade ago, and we have seen the creative community of Omaha flourish and grow in response. We are proud that we have been at the forefront of a growing movement in Omaha to fairly compensate artists.

We have seen the impact – and so have you. Our wonderful hometown is placing an ever-increasing value upon the contributions artists bring to create a healthy community. We are now able to support hundreds of local artists while attracting talent from across the country to join us each year.

We would not have gotten here without your help. We can and will continue this exciting level of growth with your continued support.

Please make a gift to the BLUEBARN Artists' Fund today in celebration of our 35th anniversary and make sure that extraordinary artists continue to create powerful works of art right here in the Heartland for years to come.

With gratitude,

Susan Clement  
Producing Artistic Director  
BLUEBARN Theatre



Donate in the BLUEBARN lobby  
Scan the QR code

Donate online at [bluebarn.org/artists-fund](https://bluebarn.org/artists-fund)  
Or call Heather at 402.345.1576 x6

# Queens Theatre and Benson Theatre Present



**May 17, 18, 19 2024**

**Benson Theatre  
6054 Maple Street**

**[www.BensonTheatre.Org](http://www.BensonTheatre.Org)**



# Celebrate the Holidays with OCP!

Nov. 17–Dec. 23, 2023

*Hawks Mainstage*



## A Christmas CAROL

**Tickets On Sale Now!**

### **Sister's Christmas Catechism**

by Maripat Donovan  
with Marc Silvia and Jane Morris

### THE MYSTERY OF THE MAGI'S GOLD



Nov. 24–Dec. 23, 2023

*Howard Drew*



omaha**community**playhouse

6915 Cass St. | (402) 553-0800 | [OmahaPlayhouse.com](http://OmahaPlayhouse.com)





# FILM STREAMS™

RUTH SOKOLOF THEATER  
DUNDEE THEATER

Join Omaha's premier nonprofit arthouse cinemas to engage in a variety of programs within five principal areas:

- ▶ NEW RELEASES
- ▶ CLASSICS
- ▶ COMMUNITY ENGAGEMENT
- ▶ EDUCATION
- ▶ SPECIAL PROGRAMS

FOR SHOWTIMES AND  
MORE SCAN OR VISIT  
[FILMSTREAMS.ORG](http://FILMSTREAMS.ORG)



**RUTH SOKOLOF THEATER**  
1340 MIKE FAHEY STREET  
OMAHA, NE 68102  
[FILMSTREAMS.ORG](http://FILMSTREAMS.ORG)

**FILM  STREAMS™**

**DUNDEE THEATER**  
4952 DODGE STREET  
OMAHA, NE 68132  
[FILMSTREAMS.ORG](http://FILMSTREAMS.ORG)

AN ART FORM · DEVOTED TO THE PRESENTATION AND DISCUSSION OF FILM AS AN ART FORM · DEVOTED TO

CALL YOUR BARTENDER  
FOR A GOOD TIME

COCKTAILS

BOOZY  
SLUSHEES

LATE NITE  
FOOD

HOMEMADE  
PIE



DATE NITE  
AWAITS!

A hop and a  
skip away

DOWN IN  
LIL' BOHEMIA

A SODA FOUNTAIN

**Fizzy's**

FOUNTAIN & LIQUORS

FOR GROWN UPS!

OMAHA, NEBRASKA

1408 S 13TH STREET - FIZZYSOMAHA.COM

# MIDLANDS **business journal**

**Subscribe to the MBJ**

[mbj.com/subscribe](http://mbj.com/subscribe)



**Local Business & Community News  
We got you covered.**

**Midlands Business Journal  
\$7/month**

A full year of MBJ delivered either digitally, in print or both ( 52 issues)

**Insider news for the Omaha metro area including the counties of:**  
Douglas, Sarpy, Pottawattamie & Lancaster via [mbj.com](http://mbj.com)

Unlimited access on any device

**Bonus publications including:**

Corporate Giving Guide & Event Book, 101 Things to LOVE about the Omaha metro,  
metroMAGAZINE, 40 Under 40, Book of Lists plus more!

Discounted tickets to MBJ & metroMAGAZINE signature events and more!

**MUSIC THAT MAKES YOU FEEL GOOD!**

# LEGENDARY LINEUP

*Locally Owned & Locally Loved*

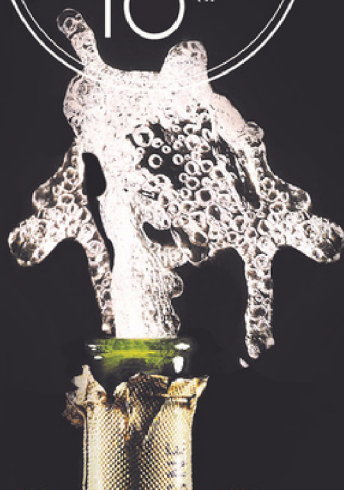
**BOOMER!**  
*radio*

94.5 • 1490 • 104.1 • 97.3



[myboomerradio.com](http://myboomerradio.com)





NOW OPEN

THE LAST ACT IS ACROSS THE STREET

**AFTER THE SHOW**, CAP THE NIGHT OFF AT  
**OMAHA'S NEWEST COCKTAIL AND CHAMPAGNE BAR.**

1022 S. 10TH ST.

COCKTAILS • FOOD • CHAMPAGNE