



SEASON

35

\*SPARK\*



BLUEBARN THEATRE



*via farina*

**CAREFULLY CRAFTED  
PASTA & PIZZA**



**LATE NIGHT HAPPY HOUR  
AFTER THE SHOW**

GOVIAFARINA.COM (402) 502.9880



# What's Your Dream?

Insuring life's possibilities.



**Mutual of Omaha**

Protect Your Kingdom



THE WORLD PREMIERE OF OUR MAGICAL NEW BALLET

# Cinderella

**April 27 & 28**

Hoff Center

**May 11 & 12**

Orpheum Theater

AMERICAN  
MIDWEST  
**Ballet**  
amballet.org



**FEBRUARY 16 & 18**

## LA TRAVIATA

Composed by Giuseppe Verdi

Libretto by Francesco Maria Piave

ORPHEUM THEATER

TICKETOMAHA.COM



**Arthur  
& Friends**  
Make a Musical!

**LIFE DOESN'T  
FRIGHTEN ME**

**night at  
the FARM**  
a bedtime party

**THREE  
LITTLE BIRDS**



**Charlotte's  
Web**

# Imagine the POSSIBILITIES

Anything is possible at The Rose! This season at The Rose, we invite you to step into the spotlight alongside favorite characters with *Arthur & Friends Make a Musical* and *Rudolph the Red-Nosed Reindeer*. Be empowered with Maya Angelou's *Life Doesn't Frighten Me*. Meet farmyard friends in *Night at the Farm* and find a new groove *Three Little Birds*. Enjoy a silly twist on the classic *Red Riding Hood*, experience the wonder of friendship with *Charlotte's Web*, and discover what makes life sweet with *Charlie & the Chocolate Factory*.

Anything is possible as the curtain rises, the lights begin to twinkle and the story begins. It all begins this season at The Rose! **Imagine the possibilities!**

**PLUS...Rose members get DISCOUNTED TICKETS to 2023-24 Premium Events:**

***Rudolph the Red-Nosed Reindeer* and *Charlie & the Chocolate Factory*!**



**JOIN TODAY!**

**402-345-4849**

**[www.rosetheater.org](http://www.rosetheater.org)**



# ON GOLDEN POND



**Mar 14-17 & 21-24, 2024**  
**Thu-Sat 7:30PM / Sun 2PM**



**FINESSE**  
ADVANCED MEDICAL AESTHETICS

402 671-0396 | [www.FinesseOmaha.com](http://www.FinesseOmaha.com)



Finesse was born from the desire to provide quality, safe and conservative aesthetics treatments.

It takes years of experience, a discerning eye and a willingness to listen to what a client needs to feel and look their best.

**Don't trust your face to just anyone.**



Leanne Carlson, PA-C

**Specializing in Botox, Fillers, RF Microneedling,  
and other Medical Grade Skin Care Needs**

When you're downtown...  
Try the RICHEST Around!

# Ted & Wally's

= ICE CREAM =

**OLD MARKET**  
1120 Jackson St  
(402) 341-5827

**BENSON**  
6023 Maple St  
(402) 551-4420

OMAHA NE - EST 1986



@tedandwallys

# ADVENTURE AWAITS OFFSTAGE



## SARO CIDER LOUNGE

Full Bar  
Live Music

Gluten-Free  
Appetizers

Local Draft  
Cider

SAROCIDER.COM

1012 S. 10th St.  
Omaha, Nebraska

BLUEBARN  
SEASON  
**35**  
SPARK



## MORE OF A HEART

BY DAVE OSMUNDSEN



MARCH 28 - APRIL 21

# NEW! TRUBLU SEASON MEMBER 3-PACK

3 SHOWS FOR \$105

ON SALE JAN 8 - FEB 25, 2024



by Selina Fillinger

May 23 - June 23

VISIT [BLUEBARN.ORG](http://BLUEBARN.ORG)  
SCAN THIS QR CODE OR  
CALL THE BOX OFFICE  
TO BUY A TRUBLU 3-PACK



CHOOSE LIVE THEATRE  
[BLUEBARN.ORG](http://BLUEBARN.ORG)  
402-345-1576  
1106 S. 10TH ST, OMAHA NE





# BLUEBARN THEATRE VALUES

AT BLUEBARN, WE MAKE OUR VALUES CENTRAL TO HOW WE WORK AND CREATE TOGETHER.  
THIS LIST OF VALUES IS ONGOING AND EVER CHANGING AND WILL EVOLVE AS WE DO.

We empower each other to try new things and be confident in their choices.  
We crave meaningful discussions that teach us how to keep improving.

WE WILL CREATE A SAFE  
SPACE FOR BOLD  
ARTISTIC CHOICES.

We believe there is always more to learn.

We believe in challenging how we think, propelling us toward a future enriched by continuous learning & creative exploration.

We believe in change through the arts and by listening to one another.

We take pride in welcoming and supporting our artists' authentic selves.

We endeavor to create a safe space that encourages creativity, individuality, and bold thinking.

We work to make everyone feel welcome.



**BLUEBARN THEATRE**

# **The Great Leap**



**FEB 1 - 25**  
**Directed by Wai Yim**

**BY  
LAUREN YEE**



# WELCOME FROM THE BOARD PRESIDENT



Greetings BLUEBARNers!

Welcome to the BLUEBARN Theatre and to another stellar production, one that deftly sheds light on a fascinating era in US-China relations and casts those times in the setting of something as superficially basic as a basketball game. I've been excited about "The Great Leap" since this season was announced and have no doubt this amazing play will give you much inspiration for great discussion after the show.

And we're only halfway through this spellbinding 35th season. Heaps of thanks to our sponsors, donors, and season ticket holders - it's so wonderful to watch Susan and her entire creative team live up to the standard of "creating theater worthy of its audience," and it is only through all of your support that this wonderful organization does just that time and time again.

Enjoy!

Devin

A handwritten signature in dark ink that reads "Devin Fox".

**Devin Fox, Board President**



## DIRECTOR'S NOTES

First and foremost, thank you for having me back to BLUEBARN. Directing *The Chinese Lady* last season was truly special to me, I hope you got the chance to see the production and that it resonated with you.

Welcome to *The Great Leap* by Lauren Yee, a play that delves into the cultural, societal, and political risks associated with expressing oneself and asserting one's position. It is also a play about family, as well as a play about redemption.

When do you "run"?

When do you "stand still"?

Do you "wait your turn"?

Or do you "take your shot"?

It is not an easy task to take a risk.

It requires a tremendous amount of bravery.

And at times, it can be dangerous.

You may even lose everything.

But yet, sometimes, it is all worth it.

Whatever your reasons are, you take the leap of faith, and you go for it.

You risk it all... for yourself, for your family, for your friends, for your country.

It means a lot to me that here in my hometown of Omaha, BLUEBARN Theatre is continuing to take risks.

I hope you will too.

Because "Every game is a second chance."

"A second chance to live your life all over again."

xo,

Wai.

# SHOW SYNOPSIS

**When a Chinese-American basketball player from the streets of San Francisco lands in Beijing in 1989, he is caught in the middle of a cultural and political battle on and off the court. As turmoil unfolds in Tiananmen Square, walls fall and secrets are revealed. Lauren Yee's "The Great Leap" explores the risks of speaking out and standing your ground in this fast-paced drama that will have you gripped until the final buzzer sounds.**

*This performance runs approximately 2 hours  
with one intermission.*

Please silence all cell phones, smart watches,  
and other noise-making devices.

---

The Great Leap was originally developed and produced by Denver Center for the Performing Arts Theatre Company, Chris Coleman, Artistic Director.

New York Premiere Presented by Atlantic Theater Company, New York City, 2018.

"The Great Leap" was developed with the support of The Playwright's Center

Developed in the New Strands Residency, a program of the American Conservatory Theater, Carey Perloff, Artistic Director - Peter Pastreich, Executive Director

A workshop production of The Great Leap was presented by New York Stage and Film & Vassar at the Powerhouse Theater, Summer 2017.



# SHOW SPONSORS



**Mutual of Omaha**

**Sara Foxley**

**Laura Peet Erkes & Corey Erkes**



**BIG MUDDY Workshop**

Master Planning | Landscape Architecture | Green Infrastructure



# SEASON 35 SUPPORTERS

**HOLLAND**  
foundation

**Fred & Eve Simon**  
Charitable Foundation

**THE SHUBERT**  
FOUNDATION

**Giger Foundation**

**Mammel**  
Foundation

**Webster Family Foundation**



**Adah and Leon**  
Millard Foundation

**Amy Haddad & Steve Martin**

**94.5 BOOMER!** **valmont**

**MAVENSOCIAL**

**Fashion Cleaners**  
■ PASSION ■ SERVICE ■ INNOVATION ■



Would you or your company like to sponsor a BLUEBARN production?  
Contact Heather at 402.345.1576 x6 or [hhoyt@bluebarn.org](mailto:hhoyt@bluebarn.org).

# CAST

Manford.....	<b>Jimmy Nguyen</b>
Saul.....	<b>Thomas Becker</b>
Wen Chang.....	<b>Adam Bassing</b>
Connie.....	<b>Patty Kuo</b>

# PRODUCTION CREATIVES

Director.....	<b>Wai Yim</b>
Stage Manager.....	<b>Madelyn Hubbard</b>
Scenic & Lighting Designer.....	<b>Steven Williams</b>
Costume Designer.....	<b>Denise Ervin</b>
Production Manager & Props Design.....	<b>Amy Reiner</b>
Sound & Projection Designer.....	<b>Bill Kirby</b>
Scenic Artist.....	<b>Craig Lee</b>
Sound Board Operator.....	<b>Mindy Cotner</b>
Master Carpenter.....	<b>Shane Staiger</b>
Master Electrician.....	<b>Sally Grosenbach</b>
Art Curator, Mammel Lobby.....	<b>Jared Spence</b>



**BLUEBARN Theatre** is an Associate Member of the **National New Play Network**.

**NNPN** is an alliance of professional theatres across the country that are evolving and exploring the frontiers of the American theatre. **BLUEBARN** has long been Omaha's home for professional contemporary theatre, bringing diverse perspectives, new voices, and provocative work to our community. The **National New Play Network** has become the most powerful, growing force in new play development, production, and promotion in the nation.

**BLUEBARN** is committed to seeking out collaborative relationships with other NNPN member theatres, producing and supporting the work of the most dynamic emerging voices in contemporary playwriting, and promoting local artists on a platform with national reach.

To support New Play Development at the **BLUEBARN**, contact Susan at [sclement@bluebarn.org](mailto:sclement@bluebarn.org). To learn more about **NNPN** and its programs, visit [NNPN.org](http://NNPN.org).

## CAST BIOS



### **Thomas Becker - he/him - Saul**

Thomas has performed with The Shakespeare Theatre in Washington, DC, and the California Shakespeare Theatre. His recent roles at Omaha's BLUEBARN Theatre include: Lear in *King Lear*, Teach in *American Buffalo*, Carmichael in *A Behanding in Spokane*, and Jekyll in *Jekyll and Hyde*. He performed as Krapp in Brigit St Brigit's production of *Krapp's Last Tape*, Richard Harkin in *The Seafarer*, and Malvolio in *Twelfth Night*. At the Omaha Community Playhouse he was Stan in *Sweat*, Atticus in *To Kill a Mockingbird* and Juror number Eight in *12 Angry Men*. His award-winning audio book narrations for Commuter's Library include *The Humor of Mark Twain* and *The Adventures of Huckleberry Finn*.



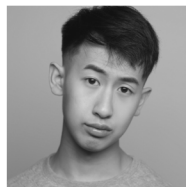
### **Adam Bassing - he/him - Wen Chang**

Adam is thrilled to be back at the BLUEBARN, where he was last seen in *The Emperor and the Fool* as part of the Big Damn Door Festival. Most recently, he was a part of Brigit St Brigit's annual *Holiday Lites* at the Benson Theatre. Other credits include *Fireside Tales* and *God on Trial* (BSB), *Eurydice* (Creighton University), *The Last Supper* (SNAP!), and *Murder on the Orient Express* (OCP). He also had a supporting role in a recent local short film, *Daylight Savings*. He received his BA in English from UNO and his PharmD from UNMC.



### **Patty Kuo - she/her - Connie**

Patty Kuo is thrilled to be making her professional acting debut with BLUEBARN. Previous credits include Masha/ensemble in *Young Frankenstein* (Nebraska Communities Playhouse) and ensemble in *Something Rotten!* (Lincoln Community Playhouse). Patty received acting training from University of Nebraska-Lincoln and University of North Carolina at Chapel Hill. Outside of theatre, Patty is a professor at UNL, where she teaches and conducts research on family and child development.



### **Jimmy Nguyen - he/him - Manford**

Jimmy is a Vietnamese-American actor and has worked at various theatre institutions across the country including The Kennedy Center in D.C., Hope Repertory Theatre in MI, Illinois Shakespeare Festival, and a world premiere of a new Asian-American musical called *Gold Mountain* at the Utah Shakespeare Festival. Recently, he took over the roles as the immediate replacement for Demetrius in *A Midsummer's Night Dream* and Benvolio in *Romeo & Juliet* at the Utah Shakespeare Festival this past August. His identity as an Asian-American guides his practice and how he approaches his craft. As a kid, he saw Asian-Americans in the media repeatedly portrayed as bullied nerds, gas station clerks, laundromat workers, cab drivers, etc. He decided he wanted to change that narrative. Through his work, he continues to challenge what it means to be an Asian-American actor. **website:** jimmynguyenactor.com

## CREATIVE BIOS



### Wai Yim - he/they - Director

Wai Yim is an actor, director, choreographer, playwright, and the Managing Director of Chicago's Token Theatre. He directed *The Chinese Lady* at BLUEBARN last season. You may have also seen him digitally onstage in *A Very Die Hard Christmas*. His semi-autobiographical play, *The Emperor and The Fool (Chronicles of the House of Yim)* was workshopped at BLUEBARN and won OEAA's Best New Script. Wai recently performed in *A Christmas Carol* at The Goodman Theatre. He was also in Mary Zimmerman's *The Notebooks of Leonardo da Vinci* (Goodman Theatre, Shakespeare Theatre Company, The Old Globe). Chicago credits: *King of the Yees*, *Postnation*, *The King of Hell's Palace*, and Mary Zimmerman's *The White Snake* (Goodman Theatre); *Chimerica* (TimeLine Theatre); *ZAC EFRON* (Token Theatre). Regional credits: *The White Snake* (The Old Globe, McCarter Theatre, Wuzhen Theatre Festival in China); *The Oldest Boy* (Unicorn Theatre); *Nomad Motel* (Horizon Theatre Company). Film: *North of the 10*, *Fatal Influence: Like, Follow, Survive*. TV: *Work in Progress*, *Power Book IV: Force*, *neXt*, *Chicago PD*, *The Chi*, *Patriot*. **Social medias:** @whyym



### Steven Williams - he/him - Scenic & Lighting Designer

In his 28th year at the University of Nebraska Omaha, Mr. Williams is Chair and Head of Design and Production for UNO Theatre. He is a freelance scenic, lighting, and graphic designer who has designed over 150 productions with such notable companies as the Lake Tahoe Shakespeare Festival, Nebraska Shakespeare Festival, Omaha Community Playhouse, BLUEBARN Theatre, The Rose Theatre, Theatre Aspen, Heritage Repertory Theatre, Indiana University, Brown County Playhouse, and Mcleod Summer Playhouse. Since 1998, he has designed scenery for Thorn Productions, which produces *The Thorn*, one of the largest touring church productions in the country. This production has been seen live by nearly 1 million people and televised to over 20 million households. He most recently served as production designer and production consultant for an international film release of *The Thorn*. Steven has designed numerous productions for the BLUEBARN including scenery and lighting for *King Lear* and *Indecent*.



### Denise Ervin - she/her - Costume Designer

Denise is a graduate of the Fashion Institute of Design and Merchandising in Los Angeles, CA. She has been designing and creating costumes and custom clothing for over 35 years. Denise has extensive experience in designing for live theatre, film and dance. As head designer for the Omaha Playhouse, she was responsible for overseeing the design and production of 5-8 shows per season. While living in Los Angeles, Denise worked as a senior designer and developer for AGRON Inc, an accessories licensee of ADIDAS while also maintaining a freelance design business. Among her credits, she was commissioned to design Marilyn Quayle's gown for the 1989 Inaugural Ball, selected as Official Couturier for the AK-SAR-BEN Coronation and Ball in 1992, 2019, 21,22. She was awarded the Bob Mackie scholarship at FIDM in 1988.

**website:** [dervin8.wixsite.com/denise-ervin-designs](http://dervin8.wixsite.com/denise-ervin-designs)



# CREATIVE BIOS

## Madelyn Hubbard - she/her - Stage Manager

Madelyn is an arts manager and theatre professional in Omaha, Nebraska, where she was born and raised. Madelyn truly loves the arts. Being a part of the process from the first design meeting to taking down the last piece at strike is what drives her every day to become a better professional. @lilmisshubbard

## Craig Lee - he/him - Scenic Artist

Mr. Lee has lived in the Midtown area of Omaha since 1985. His work has appeared on virtually every local live theatre stage since then, as well as in movies, television, and publications. He has worked with the finest designers in the area on countless shows and has painted indoor and outdoor murals all over Omaha. At his studio he has completed commissioned paintings, drawings, and production designs. He has taught scenic painting and worked with students on many university productions. He has proudly supported and collaborated with BLUEBARN Theatre for much of its existence and is extremely fortunate to call the talented, passionate professionals who work here some of his very best friends.

## Mindy Cotner - Sound Board Operator

Mindy has been involved in Omaha-area theater since age 11, first appearing onstage as Lullaby League #2 in a production of *The Wizard of Oz*. After earning a B.F.A from the University of Nebraska Omaha Writer's Workshop, she came to roost in technical theater and discovered the joys of working on the "dark side." Favorite productions in her 18 seasons with BLUEBARN include *The 39 Steps*, *Spring Awakening*, and *Every Brilliant Thing*. She has also worked on several productions with the Ollie Webb Center's Art of Imagination, appearing onstage as the Banshee and Selkie Queen in *Fear Liath*, and running follow spot for *The White Gander* and *Morozko*.



"Tank Man" temporarily stops the advance of several Chinese tanks on June 5, 1989, in Beijing. This photograph was taken by **Jeff Widener** of the Associated Press.

# RESIDENT CREATIVE BIOS

## **Susan Clement - She/Her - Producing Artistic Director**

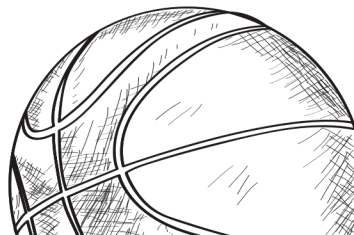
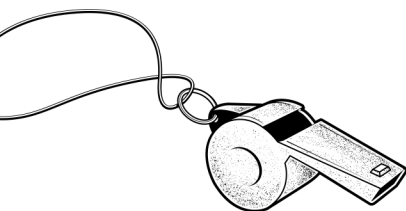
Susan has served as BLUEBARN's Producing Artistic Director since 2002. She has directed numerous productions at the BLUEBARN, beginning with *The Night Larry Kramer Kissed Me* in 1993. OEAA Awards – Best Director: *Red Summer* (2020), *Indecent* (2019) *The Resistible Rise of Arturo Ui* (2018), *Our Town* (2015), *39 Steps* (2013), *Spring Awakening* (2012), *Seascape* (2008); Best Play - *Our Town* (2015), *Red* (2013), *The Pillowman* (2006). As director of the BLUEBARN, Susan alongside Shannon Walenta (Managing Director at the time) spearheaded the capital campaign that enabled the BLUEBARN to build its own stand-alone theater, and saw the dream fulfilled when BLUEBARN moved into its new home at 10th and Pacific in 2015. Susan holds a B.F.A in Theatre/Film from the State University of New York at Purchase Conservatory.

## **Amy Reiner - She/Her - Director of Production & Props Designer**

Amy joined the BLUEBARN in 2012 as Production Manager and Properties Master. Amy went to college at the University of Nebraska-Lincoln where she received a B.F.A in technical theatre with an emphasis on Scenic and Lighting Design. After leaving Lincoln, she spent three years freelancing in Los Angeles in the fields of film and television. Returning to her hometown of Omaha in 2000, she worked as Properties Master for 12 years at The Omaha Community Playhouse where some of her favorite shows were *Violet*, *The Battle of Shallowford* and *The Fantasticks*. Some of Amy's favorite BLUEBARN shows include *Red*, *American Buffalo*, *the 39 Steps*, and *A Very Die Hard Christmas!*. In her free time Amy enjoys volunteering at a few places including HETRA, a Gretna based equine therapy program. She especially loves her fur children Ethel, Norman, Pearl and Rose, as well as her goldfish Elmer Fudd and Sylvester.

## **Bill Kirby - He/Him - Technical Director, Sound & Projection Designer**

Bill joined the BLUEBARN staff as the Resident Creative and Technical Director in 2019, after working as a freelance designer for the two previous seasons. Favorite BLUEBARN productions include *Venus in Fur*, *Wakey, Wakey*, *Indecent* (OEA Award for Outstanding Sound Design), and *Red Summer* (OEA Award). Before relocating to Omaha in 2017, Bill spent 10 years as the resident sound designer and head sound engineer at Princeton University's McCarter Theatre Center. Bill's favorite McCarter productions include sound designing the original workshop production of Danai Gurira's *Eclipsed* and serving as the production sound engineer for the world premiere of Christopher Durang's *Vanya and Sonia and Masha and Spike*, which would go on to win the 2013 Tony Award for best play. Kirby has worked nationally and internationally, including productions at the New York Fringe Festival, LA's Kirk Douglas Theatre, the Wuzhen Grand Theatre in China, and the Repertory Theatre of St. Louis. Bill is a graduate of the Royal Welsh College of Music and Drama. **web:** kirbysound.live



## **BLUEBARN Staff**

**Susan Clement**

Producing Artistic Director

**Erika Sieff**

Managing Director

**Amey Reiner**

Director of Production & Properties Master

**Heather Hoyt**

Director of Development and Marketing

**Bill Kirby**

Resident Creative & Technical Director

**Sydney Readman**

Front of House / Box Office Manager  
& Community Connector

**Madelyn Hubbard**

Resident Stage Manager

**Francisco Franco**

Production Assistant / Rentals Manager

**Jimmy Nguyen**

Graphic Designer & Community Connector

**Marti Baumert**

Bookkeeper

## **BLUEBARN Board**

**Devin J. Fox, MD**, President

**Robert Peters**, Treasurer

**Laura Peet Erkes**, Secretary

**Ethan Bondelid**

**Jannette J. Davis**

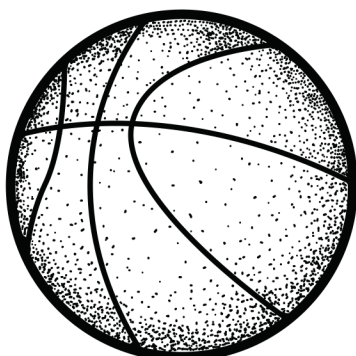
**Sara Foxley**

**Sara McClure**

**Jim McKain**

**Michael Walenta**

**Susan Clement** (ex-officio)



Facebook.com/BLUEBARN

@bluebarntheatre\_omaha



@bluebarntheatre

@bluebarn.theatre



**Al Marcault**

**Omaha Community Playhouse**  
**Creighton Costume Department**

## **LAND ACKNOWLEDGEMENT**

The BLUEBARN Theatre stands in honor of the first inhabitants and our ancestors. We acknowledge the land on which The BLUEBARN stands — the unceded territory of the Umonhon ('um AHhah") and ochethi Sakoiwic. We acknowledge the painful history of genocide and forced removal from this territory. We honor the generations of stewards, and we pay our respects to the many diverse Indigenous peoples still connected to this land.

**Visit [native-land.ca](http://native-land.ca) to discover the native land on which you reside or currently find yourself.**

## **ANTI-RACISM | ANTI-OPPRESSION ETHOS**

**BLUEBARN Theatre owns that systemic racism is real, always at play, and intersects with multiple systems of oppression and that all must be fought against wherever and however they show up - in our community, in our theater, in ourselves.**

### **ANTI-HARASSMENT & INCLUSION**

BLUEBARN Theatre is committed to fostering a culture of civility, dignity, and respect as a right and responsibility of all who walk through its doors. Employees, guest artists, volunteers, and patrons are entitled to and responsible for maintaining an environment of mutual trust - free from intimidation, exploitation, harassment, and discrimination. Offensive, abusive, or unwelcome verbal or physical conduct will not be tolerated. Adhering to this standard is vital to the BLUEBARN's mission.

### **DIVERSE AUDIENCE PRACTICES PRINCIPLE**

Hospitality has always been one of BLUEBARN's core values. Welcoming you to this space is our great joy. You are invited to bring your full self to the experience. Audible reactions and responses are absolutely welcome. For some people, this is church, for some a meditative space, for others an escape, and we invite you to respect the ways that others engage in the experience based on their individual or cultural practices. By gathering at the BLUEBARN, you have committed to a shared experience in community with others, free from etiquette shaming, microaggressions, and entitled behavior.



# ACCESS

BLUEBARN Theatre is committed to ensuring that our boundary-breaking theatre is accessible to everyone. We are committed to easing cost barriers for young professionals and students. We are committed to providing low-cost, last-minute opportunities for anyone to see a show. We are committed to recognizing those who give the most in service to our community.

## BLUCrew - Young Patron Development Program

Anyone 35 or under is eligible. Members receive discount pricing for most Sunday and Thursday shows throughout the season with no upfront cost. Contact Sydney at [sreadman@bluebarn.org](mailto:sreadman@bluebarn.org) to join BLUCrew.



## Rush Tickets

Every unsold seat. Every show. \$20. Available only at the box office, 45 minutes before curtain. If we're not sold out, you have a new way in.



## Nebraska Educators, Healthcare Workers, and Military Personnel

\$4 off all tickets. All the time.



## Radical Hospitality

Sometimes you need a break. It doesn't matter why. For pay-what-you-wish tickets to any show, contact Sydney at [sreadman@bluebarn.org](mailto:sreadman@bluebarn.org).



## Assisted Listening Devices

These are available at the box office for mainstage productions. BLUEBARN also utilizes Listen Everywhere, a smartphone application that allows you to stream audio directly to your own headphones and Bluetooth-compatible hearing aids. See our box office staff for assistance or scan the QR code provided.



An **American Sign Language** interpreted performance is offered for *The Great Leap* on **Friday, February 9**.

An **Audio Description Service** is provided through Outlook Nebraska upon request. Audio-described performances fall on the 3rd Thursday of each run when requested.

**Sensory Kits** are available at the box office and the lobby is always available as a respite from the performance environment. Sensory Kits provided by **Autism Action Partnership**.

To request these or additional accommodations, or for more information, Please call **(402) 345-1576** or email Sydney at [sreadman@bluebarn.org](mailto:sreadman@bluebarn.org).

## **Afterwords: Post Show Talkback w/ Cast and Creatives**

Friday, February 2nd | on stage, immediately following our 7:30 pm show

Immerse yourself deeper into the world of *The Great Leap* by participating in an enriching talkback session with our talented cast and crew! This experience offers a rare opportunity to connect with the individuals responsible for bringing the play to life, gain unique insights into the creative process and character development, and provide a behind-the-scenes glimpse that enhances your appreciation for the artistry and dedication involved in crafting *The Great Leap*!



**Saro Cider / BLUEBARN Theatre**  
**presents...**

## **Basketball Themed Trivia Night**

Wednesday, February 7th | 7:00 pm – 9:00 pm

Location: Saro Cider | 1012 S 10th St, Omaha, NE 68108

Join BLUEBARN for a night of hoops and brainpower at our Basketball Trivia Night at SARO Cider! Score big with slam-dunk answers, compete for MVP status, and dribble through an evening of spirited competition! So, lace up, bring your A-game, and let the trivia madness begin!

**1st Place team:** two single tickets for *The Great Leap*  
& one \$50 gift card to SARO Cider

**2nd Place team:** \$20 gift card to SARO Cider

## **Afterwords: Discussion with Playwright Lauren Yee**

**watch for details coming soon!**

In a lively and insightful conversation, acclaimed playwright Lauren Yee engages in a dynamic exchange with the cast and creatives behind *The Great Leap*. Watch as they share their perspectives and ideas as the chat becomes a vibrant exploration of artistic vision, cultural resonance, and the transformative power of storytelling in a world of theatre.



omaha  
performing  
arts  
voices amplified

## Omaha Performing Arts "Voices AMPLIFIED!"

### Pre-Show Dragon Dance and Talkback

Thursday, February 8th | 6:30 pm; Lobby open at 6:00 pm

In partnership with O-PA's Voices AMPLIFIED! Series, we will be hosting a Dragon Dance followed by a talkback with AAPI voices in the artistic community.

## Partnership with Osher Lifelong Learning Institute

Sunday, February 18th | Table with presented information

Discover the intersection of theatrical arts and lifelong learning as we showcase the collaborative initiatives between these two organizations. Come down and immerse yourself in an enriching experience, gaining insights into BLUEBARN's dynamic productions and OLLI's commitment to lifelong education.



## ART IN THE BLUE

CURATED BY JARED SPENCE



The "A Moment in Time" exhibit is on display to the public, 45 minutes prior to the show, M-F during Box Office Hours, 10 am-4 pm.

## "A Moment in Time" Art Exhibit

BLUEBARN Mammel Lobby

Curated by: Jared Spence

Featured Artists

Richard Chung | Eduardo Gardea | Lew Lunbeck  
Jared Spence | Howard Thiel | Anthony T Peña

The exhibition focuses on the dynamic nature of human movement and the lasting impact it creates. The artwork narrates the collective power of people in driving change, illustrating how their strides resonate across the fabric of time.

All art proceeds go directly to participating artists.

Pre-Show Art Chats with Curator, Jared Spence

**February 11th with Anthony T Peña** | 1:30 pm, before the 2:00 pm show

**February 17th with Lew Lunbeck** | 7:00 pm, before the 7:30 pm show

Please join us for two pre-show conversations with Jared and the "A Moment in Time" artists.

For full Engagement Info visit [bluebarn.org/engagement](https://bluebarn.org/engagement)

# BLUEBARN Theatre Season Contributors

July 1, 2022 - January 10, 2024

## INSTITUTIONAL GIVING

### **\$25,000+**

Douglas County  
Holland Foundation  
Shubert Foundation  
The Fred and Eve Simon Charitable Foundation

### **\$10,000-\$24,999**

First National Bank  
Great Plains Theatre Commons  
Mammel Foundation  
Adah and Leon Millard Foundation  
Mutual of Omaha  
Nebraska Arts Council  
Omaha Steaks International  
Weitz Family Foundation

### **\$5,000-\$9,999**

Anonymous  
Boomer Radio  
Gilbert M. and Martha H. Hitchcock Foundation  
Metro Community College  
metroMAGAZINE  
Valmont Industries, Inc.  
The Webster Family Foundation  
Whitmore Charitable Trust

### **\$1,000-\$4,999**

Anonymous  
Big Muddy Workshop, Inc.  
Bluestem Prairie Foundation  
DJ Sieff Style Entertainment  
Dundee Bank  
Fizzy's  
Giger Foundation  
Heider Family Foundation  
Highline Warren  
Millard Lumber  
Minier Family Fund  
Saro Cider Omaha  
Sips on 10th  
The Brownie Bar Omaha

### **\$10-\$999**

CoCreate Change, PLLC  
Community Foundation for Western Iowa  
Fashion Cleaners  
Lumen Beer Co.  
Marti CPA LLC  
Network For Good

PayPal Giving Fund  
Upstream Brewery  
US Bank

## INDIVIDUAL GIVING

### **Visionaries (\$15,000+)**

Rob Block and Devin Fox  
Sandi and Bill Bruns  
Bruce Reneaud and Kerry Dobson

### **Masterminds (\$10,000-\$14,999)**

Marilyn Fox  
Amy Haddad and Steve Martin  
Carter and Vernie Jones

### **Innovators (\$5,000-\$9,999)**

Jannette Davis  
Sara Foxley  
Rich and Fran Juro  
Ray Kawaguchi and Nancy Gilliland  
Laura Peet Erkes and Cory Erkes  
David and Jane Offutt  
Emily Kean Puccioni and Ron Widman  
Annette and Paul Smith  
Jim and Susan Tracy  
Tim Wilson and Dr. Katie Weitz

### **Renegades (\$2,500-\$4,999)**

Jill Anderson  
Ethan and Susan Bondelid  
Richard and Mary Parrish

### **Rebels (\$1,000-\$2,499)**

Anonymous  
Scott Carollo  
Coleen Duda  
Elizabeth Hallgren  
Ruth H. Keene  
Leslie A. Kuhnelt and James Somers  
Lou and Pat Lamberty  
Dave Steadman and Sara McClure  
Ryan and Rebecca McCreery  
James and Kathy McKain  
Don and Rita Otis  
Robert and Barbara Peters  
Ben and Mel Teply  
Shannon and Mike Walenta  
George Wimmer and Ann Beckenhauer  
Jay Worden and Timothy Held



# BLUEBARN Theatre Season Contributors

July 1, 2022 - January 10, 2024

## Trailblazers (\$500-\$999)

Duane and Clare Baylor  
Robin Behlers and Paul Mileris  
Mary and Kurt Davey  
Tony and Claudia Deeb  
Betty Foster and Roger Blauwet  
Dan Gallagher and Jeff Grinnell  
Deryl F. Hamann  
Kim Jubenville  
Howard and Gloria Kaslow  
George Kleine and Tom Knox  
Lynn and Maria Knudtson  
Sue A. Lawson  
John and Renee Lillard  
Alan Meyer  
James and Bobbie  
Montequin  
Duncan and Rozanne  
Murphy  
Rosemary Pauley & Tim  
Daugherty  
Bradley Perry  
Emily Tonniges  
Thomas Stalnaker

## Groundbreakers (\$100-\$499)

Anonymous  
Bill and Barb Anderson  
Dean Arkfeld and Peggy  
Reinecke  
Holly Babitzke  
Angela Barry  
Trish Battaglia  
Jack Becker and Lester Katz  
Doug and Liz Bisson  
Marvin J Bittner  
Cathy Blake  
Katie Blesener and John  
Royster  
Amy and Dennis Boesen  
Amy Bones  
Amanda Boyle  
Stephen and Anne Bruckner  
Arlene Burianek  
April Butterfield  
Leanne Carlson  
Kay and Bernie Clark  
Kent Clark  
Susie and Dennis Collins  
Timothy and Rachel Combs  
Charity Conkle  
Tricia Cottrell  
Josh Cox and Josh Point  
Barbara Dahlhauser  
Michael Davidian

Susan and David Davies  
Jeff Day  
Jesse and Katie DePriest  
Anne Dey  
Benjamin Dey  
Jeff Dickinson  
George and Barbara Douglas  
Pete Eckerman and Sarah  
Wengert  
Lori Ecklebe and Tom  
Shomaker  
Steve Ellefson and Chris Rix  
Ron and Mary Ferdig  
Paige and Pete Festersen  
Terry and Mollie Foster  
Christopher and Lisa Fox  
Duane and Jacqueline Fox  
Renee and Douglas Fox  
Kay Friesen  
Linda Gjere  
The Grasz Family  
Caron Gray  
Megan Green  
M. Kathryn Gross  
Scott Groth  
Aaron Gschwandegger  
Patrick Haney  
Ellen Hargus  
Betty Harris  
Constance Heiden  
Nancy Hemmingsen  
Shari Hofschire  
Durell Kidd and Ray Hogan  
Lori Hokomoto  
Nancy Hornstein  
Madelyn Hubbard  
Gloria Jensen  
Catherine and Stephen Jesus  
Heather Kundert  
Julie Livingston and Dwight  
Johnson  
Mary and Doug Johnson  
Julie Kaminski  
Mary and Tom Kerr  
Ray Wood and Mary Keitel  
Steve Kenyon and Mary  
Stolinski  
Birgit and Jimmy  
Khandalavala  
Chris and Pam Kilroy  
Jennifer Kinney  
Julia and Joseph Knezetic  
Susan Ann Koenig  
Debbie and Steve Krambeck  
Joan and Craig Kramer  
David and Vicki Krecek  
Marie and Jack Kubat

Craig Kukuk and A.T. Miller  
Barbara and Marshall  
Kushner  
Stacie Lamb and John  
Christensen  
Launie Lambert  
Dale and Toni Larsen  
Guy and Dorothy Lawson  
Lyn and Natalie Leach  
Richard and Norma LeClerc  
Craig Lee  
William Liebermann  
Alice Lindsay  
Moiria J. Mangiameli  
Natalie Manley  
Mark Manhart and Bonnie  
Gill-Manhart  
Wayne and Karen Markus  
Karen and Michael Markey  
Gerald McAndrew  
M E McDaniel  
Amy McGaha  
Cathy McManus  
Steve and Jeanne Miller  
Lucia Milone and William  
Dittrick  
Steve Mohr  
Bobbie and Bruce Moore  
Lynne Mytty  
Karen and Larry Nelsen  
David Neumann  
Diana Nevins  
Patty and Steve Nogg  
Robert Ottemann and Kim  
Kalkowski  
Tanya Patry  
Eric Pearson & Lorraine  
Chang  
Dirk and Janice Petersen  
Bruce and Deanna Plath  
Jerry and Elizabeth Powell  
Francie Prier  
Kathleen Rettig  
Lou Ann Rinn  
Jill Rizzo and Brian Wetjen  
Butch and Kathy Roberts  
Debra Romberger  
Larry Salinas  
Amy Sand  
Jo Ann Schmidman  
Dan Schmit  
Mark Schulze  
Jeffrey Schweid

# BLUEBARN Theatre Season Contributors

July 1, 2022 - November 1, 2023

Luan and Jeffrey Scott  
Martin and Aveva Shukert  
Kendall Ziebarth & Myron  
Sikora  
Sissy Silber  
Todd and Betiana Simon  
Jill Slupe  
Randy Mousel and Stephen  
Smith  
Joan Squires  
Mary Eileen Stark  
Joni and Jason Street  
Mary Stultz  
Gregory Swanson  
Erica Sweany  
Tony and Christine Swerczek  
Jeff and Sherry Taxman  
Peg Taylor  
Steve Hutchinson and Susan  
Thomas  
Molly Toberer  
Katie Twit  
Bob Sievers and Brad Tyson  
Bill Van Deest and Carol Wisner  
Cary Ward  
Diane Watson  
Tom and Sue Weidner  
JD Welch  
Tracy and John Wells  
Sadi Vila and Fajardo Ximena

## Radicals (\$10-\$99)

Janet and Andy Acker  
Tim and Phyllis Adams  
Deb Ady  
Ronald Alexander  
Greg Andersen  
Daryl Anderson  
Anonymous  
Susanne Astley  
Michael and Janelle Baber  
Susan Baker Conyers  
Kevin Barratt  
Gary and Eileen Bates  
Benjamin Beck  
Gregg and Pam Beeman  
Karen & Katy Benson  
Laila Berre  
Karen Bluvas  
William Bucy  
Ashley Byars  
Daniel and Diana Byrd

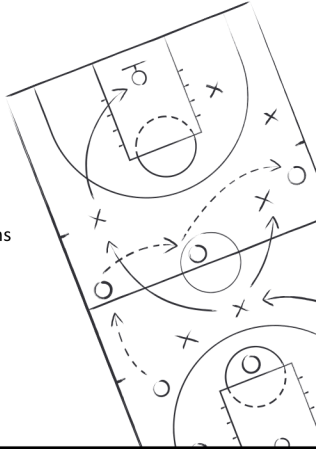
Rod Cameron  
Jim and Anne Carroll  
Kay and Bernie Clark  
Virginia Collins  
Christopher Cook  
Paula Cope  
Kim Clark-Kaczmarek  
Diane Crouch  
Dr. Debra Reilly and Bob  
Culver  
George H Curry  
Erin Dahlke  
Stephen and Suzan DeCamp  
Ricardo Delgado  
Marty and Helen Desilets  
Dan Dixon  
Linda Duckworth  
Peggy Dunn  
Tracy Durbin  
Myrna Esluer  
Ronald and Mary Filipowicz  
Alan and Cordie Fisher  
Krista Freimuth  
Bill Gaus  
Rodger Gerberding and  
Kathy Jurgens  
Marilyn Gillen  
Rose Glock  
Dwight and Rita Grangenett  
William Grennan  
DeWayne Greim  
Scott Groth  
Kaye Gurss  
Cynthia Hadsell  
Gary and Jane Hagebush  
Elizabeth Hallgren  
Hair For You Inc.  
John Davison & Ron Hansen  
Cathy Hanson  
Tony Hartzell  
Julie Hewett  
Kari Hilliard  
Ida Holliday  
Gail Houghton  
Nancy Huston  
Stephanie and Dave Jenkins  
Susan Johnson  
Dick and Linda Johnson  
Michaela Johnson  
Ann Johnson  
Michaela Kanoski  
Mary Kelly

Pat and Andy Ketterson  
Susan Kimball  
Bailey Kincaid  
William Kingston  
Merlyn Knudson and James  
Davis  
Gary Kudym  
Dan Miller and Ken Larose  
Mary-Lu Larson  
Kevin Lawler  
Pat and Bruce Little  
Anna Maio  
Ross and Jill Manhart  
Natalie Manley  
Elizabeth McInerney  
Maureen Mitchell  
Hope Mock  
Rachel Moody  
Betty Morar  
Ruth Muchemore  
Howard and Lee  
Needelman  
Mary Newman  
Michael and Linda Nichols  
Margaret Niebling  
Devon Niebling  
Gail and Nancy Nielsen  
Amy Niles  
Beth Nodes  
Kerri O'Connell  
Beth Ostiek Smith  
Dennis Owen  
Beth Paprocki  
Michael Pflueger  
Phil Pijanowski & Bob Ulip  
Sara Pirtle  
Thomas Purcell  
Kathleen Pyper  
Erik & Sara Quam  
Elizabeth and Robert  
Recker  
Kristen Rinaker  
Julie Ryan  
Jeanne and Pat Salerno  
Gene and Kathleen  
Schwartz  
Richard Scott  
Jason and Tammy Sealer  
Melissa Seffens  
Chris Shonka  
Erika Sieff  
Marty Skomal  
Cathy Solarana  
Megan Sorensen  
Steve and Audrey Spence  
Kathleen Stage  
Marian Standeven  
Michelle Stark  
Aaron Stovall  
Cathy Tauke

# BLUEBARN Theatre Season Contributors

July 1, 2022 - January 10, 2024

Kevin Thompson  
Mary Thomsen  
Carol Schmid & Jerry Toll  
Scott Van Den Top  
Catherine Walling  
Hughston Walkinshaw  
Valerie Ware  
Lindsay Weddle  
Don Westling and Jo  
Bartikoski  
Mary Wiedman  
M. Eugene & Janet Williams  
Ron Wilson  
Dave Wingert  
Keith and Lisa Winton  
Karen Wittler  
Scott Working  
Emily and Kirk Wynn  
Charlotte Young



## MEMORIALS & TRIBUTES

### In Memory of...

Outdoor Greenspace  
Lighting Dedicated in  
Memory of "Skip" Blazek  
The Giger Foundation

Megan Terry

Dave and Vicki Krecek

### In Honor of...

The Marriage of  
Devin Fox and Rob Block

Holly Babitzke

Gary and Eileen Bates

Jack Becker and Lester Katz

Sue and Mike Borg

April Butterfield

Charity Cockle

Christopher Cook

Josh Cox and Josh Point

Mary and Kurt Davey

Bud Fox and Pat Reddish

Dave and Darlene Greer

Scott Groth

The Grasz Family

Aaron Gschwandegger

Kaye Gurss

Natalie Manley

Amy de Meules

Bruce and Bobbie Moore

Jeanette Obal

Butch and Kathy Roberts

Dan and Jim Schmit

Shelly Stark

Joni and Jason Street

Peg and Barry Taylor

Emily Tonniges

Chris and Pam

From Five-Oh Block

## WISH LIST



SUN SHADES  
BIG OUTDOOR FANS



AMAZON WISH LIST  
AT THE QR CODE

**THE BLUEBARN THRIVES  
THANKS TO THE GENEROUS  
FINANCIAL SUPPORT OF OUR  
FRIENDS AND  
CONTRIBUTORS.**

**TO MAKE A DONATION,  
CONTACT HEATHER HOYT  
AT 402.345.1576 X 6 OR  
HHOYT@BLUEBARN.ORG.**

**DONATE ONLINE AT  
BLUEBARN.ORG/DONATE**



# SEASON 35 PRODUCERS

**BLUEBARN celebrates its Season Producers that SPARK,  
our 35th year of kick-ass theater!**

**Season Producers** are patrons who have made contributions in addition to their TruBLU memberships. The donations we receive above and beyond our ticket sales and subscriptions are vital to BLUEBARN's artistic success, and to the livelihoods of the artists responsible for that success. Thank you for believing in our work and supporting professional theatre in Omaha.

Tim and Phyllis Adams  
Ronald Alexander  
Anonymous  
Gregg and Pam Beeman  
Doug and Liz Bisson  
Cathy Blake  
Daniel and Diana Byrd  
Leanne Carlson  
Kay and Bernie Clark  
Andrew and Mary Helen Cockle  
Paula Cope  
Diane Crouch  
Dr. Debra Reilly and Bob Culver  
Stephen and Suzan DeCamp  
Ricardo Delgado  
Dan Dixon  
Linda Duckworth  
Steve Ellefson and Chris Rix  
Alan and Cordie Fisher  
Krista Freimuth  
Bill Gaus  
Rose Glock  
Dan Gallagher and Jeff  
Grinnell

Gary and Jane Hagebush  
Elizabeth Hallgren  
Cathy Hanson  
Nancy Hemmingsen  
Durell Kidd and Ray Hogan  
Ida Holliday  
Gail Houghton  
Stephanie and Dave Jenkins  
Dick and Linda Johnson  
Emily Kean and Ron Widman  
Ruth Keene  
Ray Wood and Mary Keitel  
Susan Kimball  
Leslie A. Kuhnelt and James Somers  
Dan Miller and Ken Larose  
Mary-Lu Larson  
Guy and Dorothy Lawson  
William Liebermann  
John and Renee Lillard  
Pat and Bruce Little  
Patricia Lontor  
Steve and Jeanne Miller  
Lucia Milone and William Dittrick  
Maureen Mitchell  
James and Bobbie Montequin  
Bobbie and Bruce Moore  
Betty Morar

Lynne Mytty  
Karen and Larry Nelsen  
Diana Nevins  
Kerri O'Connell  
Beth Ostiek Smith  
Robert Ottemann and Kim  
Kalkowski  
Rosemary Pauley  
Robert and Barbara Peters  
Thomas Purcell  
Kathleen Rettig  
Jeanne and Pat Salerno  
Randy Mousel and Stephen  
Smith  
Kathleen Stage  
Thomas Stalnaker  
Steve Kenyon and Mary  
Stolinks  
Cathy Tauke  
Mary Thomsen  
Katie Twit  
Don Westling and Jo Bartikoski  
Mary Wiedman  
Jay Worden and Timothy Held



# THE ARTISTS' FUND

EST. 2009

At BLUEBARN we believe that artists should be honored for their work not only with applause but with a paycheck. We believe that every theatre artist deserves to be paid fairly for their work, and we are committed to providing payment to every actor or artist working in our theatre. To honor this commitment, BLUEBARN established The Artists' fund in 2009, to support the creative spirits who help continue and propel the life of the BLUEBARN.

We recognize the following donors who have made contributions to The Artists' fund, and we'd like to add your name to this list! If you would like to contribute, please email Heather Hoyt at [hhoyt@bluebarn.org](mailto:hhoyt@bluebarn.org), or donate online at [www.bluebarn.org](http://www.bluebarn.org).

Andy and Janet Acker	Bam Bertino	Clark Christensen
Elias Adams	Doug and Liz Bisson	Kay and Bernie Clark
Deb Ady	Big Muddy Workshop, Inc.	Anthony and Kim Clark-
Ronald Alexander	Katie Blesener and John	Kaczmarek
Vicki and Steven Allely	Royster	CoCreate Change, PLLC
Keith Allerton and Becky	Rob Block	Babe Cohn
Noble	Jan Blosser	Susie and Dennis Collins
Bill and Barb Anderson	Bluestem Prairie Foundation	Timothy and Rachel Combs
Cara Anderson	Karen Bluvas	Community Foundation for
Anonymous	Amy and Dennis Boesen	Western Iowa
Lynette Anthony and Donna	Amy Bones	Bruce and Marsha Congdon
James	Dana and Patricia Bradford	David Corbin and Josie
Judy Archer	MaryLee Brock	Metal-Corbin
Dean Arkfeld and Peggy	Christina Broekemeier	Mindy Cotner
Reinecke	Jeanne Brown	Tricia Cottrell
Barbara Armstead	Stephen and Anne Bruckner	Curb Appeal Salon and Spa
John Ashley	Sandi and Bill Bruns	Janey Dann
Tony and Susan Awender	Catrice Bryson	Mary and Kurt Davey
Susan Baker Conyers	William Bucy	David Davidson
Barbara Bakhit	Jean Burggraf	Susan and David Davies
Kevin Barratt	Arlene Burianek	Thatcher Davis
Betty L. Beach	Char Bush	Philip Dawson
Benjamin Beck	Rod Cameron	Jeffrey Day
Carl Beck	Larry Carlson,	Mary Deak
Thomas and Lee Belford	Leanne Carlson	Ricardo Delgado
Gerry Beltz	Debbie Carman	John and Carol Dennison
Paul Bennett	Jim and Anne Carroll	Marty and Helen Desilets
Karen & Katy Benson	Jeff Carstens DDS	Jeff Dickinson
Bob Benzel and Gerry	Maria Caskey	Alan Dorn
Sullivan	Pamela Chase	Terry Doughman
Laila Berre	John Christensen and Stacie	Linda Duckworth
	Lamb	Tiffany Dunagan

# THE ARTISTS' FUND

EST. 2009

Peggy Dunn	Howard and Carol Hahn	Anonymous
Maguerite Dunn	Daniel Hamann	Sissy Silber
Tracy Durbin	Deryl F. Hamann	Nate Kaufman
Pete Eckerman and Sarah Wengert	Mary Hamilton	Ray Kawaguchi and Nancy Gilliland
Steve Ellefson and Chris Rix	Jeni Hamlin	Steve Kenyon and Mary Stolinski
Myrna Esluer	Patrick Haney	Mary and Tom Kerr
Teri Fender	Ellen Hargus	William and Maureen
Ron and Mary Ferdig	Kimberly Harris	Kessler
Liz Fleissner	Michael and Leslie Harsh	Birgit and Jimmy Khandalavala
Sherry Fletcher	John Hartigan	Bailey Kincaid
Benjamin Floyd	Constance Heiden	Bill Kirby
Jesse and Eileen Fonseca	Nancy Hemmingsen	George Kleine and Tom Knox
Betty Foster and Roger Blauwet	Team Hesse	Mogens Knudsen
James Fowler	Mark Hewett	Merlyn Knudson and James Davis
Rob Block and Devin Fox	Denise Hill	Ashley Kobza
Christopher and Lisa Fox	Kari Hilliard	Susan Ann Koenig
Marilyn Fox	Shari Hofschire	Karen Krall-Murphy
Sara Foxley	Bob Hoppe	Debbie and Steve Krambeck
Leslie Frederickson	Andrea Howard	Joan and Craig Kramer
Nathan Frey	Jacqueline Hoyt	David and Vicki Krecek
Darrel Frisch	Julie Huff	Michael Kreikemeier
Bill Gaus	Debra & Richard Humble	Gordon Krentz
Kristine and Jared Gerber	Richard A. Hunt	Shane Krzycki
Rodger Gerberding and	John and Nancy Hurley	Marie and Jack Kubat
Kathy Jurgens	John and Laura Iliff	Leslie A. Kuhnelt
Charlie Gill and Beth Molloy	Catherine Ingalls	Barbara and Marshall Kushner
Mark Manhart and Bonnie	Joanie Jacobson	Lou and Pat Lamberty
Gill-Manhart	Stephanie Jacobson	Andrea Lang
Rose Glock	Chris Janicek	Kathy Larimer
Susan Goldsmith	Grace Janiszewski	Dale and Toni Larsen
Jeff and Danielle Gordman	Gloria Jensen	Kevin Lawler
Dwight and Rita Grangenett	Ann Johnson	Sue A. Lawson
DeWayne Greim	Kay Johnson	Patricia Leaman
William Grennan	Michaela Johnson	Connie Lee
Bobby and Allison Grennan	Mary and Doug Johnson	Craig Lee
Margaret Grennan	Todd Johnson	Gina Leonardo
Dan Gallagher and Jeff Grinnell	Nakia Johnson	
M. Kathlyn Gross	Carter and Vernie Jones	
Haley Haas	Cheri Jones	
	Coulter Jones (In honor of Vernie and Carter Jones)	
	Kim Jubenville	
	Rich and Fran Juro	

# THE ARTISTS' FUND

EST. 2009

Karen Levin  
Alice Lindsay  
Pat and Bruce Little  
Anonymous  
Marc Lowe  
William and Constance  
Lowndes

Marya Lucca-Thyberg  
Mammel Foundation  
Don and Maureen Mangan  
Moiria J. Mangiameli  
Ross and Jill Manhart  
Karen and Michael Markey  
Doug and Laura Marr  
Dennis Martin  
Mele Mason  
Gerry and Christy  
McAndrew  
Gerald McAndrew  
Corey McCallan  
Teri McCarthy  
Deb and John McCollister  
Ryan and Rebecca  
McCreery  
M E McDaniel  
George and Carolyn  
McDonald

Dede McFayden-Donahue  
Amy McGaha  
James and Kathy McKain  
Lauren Medici  
R & D Nicklin Memorial  
Charity Fund Drive  
Alan Meyer  
Steve and Jeanne Miller  
Lucia Milone and William  
Dittrick  
Minier Family Fund  
Steve Mohr  
James and Bobbie  
Montequin  
Sue Moskovits

Barbara Motes  
Ruth Muchemore  
Joshua Mullady  
William and Patricia Munro  
Marie Murphy  
Lynne Mytty  
Carrie Nath  
Karen and Larry Nelsen  
David Neumann  
Megan Neville  
Diana Nevins  
Mary Newman  
Devon Niebling  
Margaret Niebling  
Roxanne R. Nielsen  
Gail and Nancy Nielsen  
Amy Niles  
Helen Nosov  
Kerri O'Connell  
Thomas Obrien  
David and Jane Offutt  
James Ogden  
Jaclyn Oltmans  
Carolyn Owen Anderson  
Richard and Mary Parrish  
Rosemary Pauley and Tim  
Daugherty  
Brigid Payton  
Eric Pearson and Lorraine  
Chang  
Pauline Pechnik  
Gail and Mervin Peck  
Grant Pedersen  
Laura Peet Erkes and Cory  
Erkes  
Bob Perrin  
Bradley and Lynn Perry  
Peter Kiewit Foundation  
Dirk and Janice Petersen  
Deb Peterson  
Michael Pflueger  
M. Michele Phillips

Amber Phillipsen  
Westley Pierce  
Jim and Kathleen Piper  
Bradley and Sara Point  
Cecilia Poon  
Jerry and Elizabeth Powell  
Francie Prier  
Thomas Purcell  
Caitlin Purcell  
Kathleen Pyper  
Erik & Sara Quam  
Kori Radloff  
Ruth Rath  
Elizabeth and Robert  
Recker  
Leslie Regan  
Pegeen Reilly  
M Jean Reiner  
Bruce Reneaud and Kerry  
Dobson  
Therese Rennels  
Doug Rennels  
Barbara Rennert  
Anonymous  
Robin Richards  
Kristen Rinaker  
Loui Anne Rinn  
Anne and David Rismiller  
Christina and Carl Rohling  
Marti Rosen-Atherton  
John Rosman and Rod  
Carlson  
Sky Rotert  
Susan Rothholz  
Sara Rueschhoff  
Donald Ruleaux  
Carol and Rick Russell  
Julie Ryan  
Jeanne and Pat Salerno  
Eric Sauvage  
Deborah Savadge  
Eileen Sawyers and Jim  
Grassmeyer

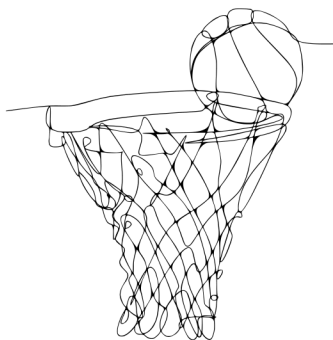
# THE ARTISTS' FUND

EST. 2009

Tony Schik  
Jo Ann Schmidman  
Gene and Kathleen  
Schwartz  
Jeffrey Schweid  
Judy Schweikart  
Richard Scott  
Greg Seanson  
Betty Segell  
Margaret Semin  
Theodore Sewell  
Shelly Shannon  
Robert Sharp  
Jeanne Shelton  
Chris Sheridan  
Chris Shonka  
Martin and Aveva Shukert  
Mark Siano  
Kendall Ziebarth & Myron  
Sikora  
Michele and Peter  
Silberstein  
The Fred and Eve Simon  
Charitable Foundation  
Ronda Simpson  
Marty Skomal  
Sandra Smiley  
Annette and Paul Smith  
Laurie Smith Camp  
Susie and Stuart Smoler  
Megan Sorensen  
Brent Spencer and Jonis  
Agee  
John and Sandy Spessard  
Joan Squires  
Thomas Stalnaker  
Mary Eileen Stark  
Meghann Stewart  
Jean Stillmock  
Kristine Stirn  
Erin Strasil Larson  
Sara Strattan

Mary Stultz  
Heider Family Foundation  
Erica Sweany  
Bronson Sweet  
Tony and Christine  
Swerczek  
Analisa Swerczek  
Jeff and Sherry Taxman  
Mel and Ben Tepley  
Steve Hutchinson and Susan  
Thomas  
Matthew Thompson  
Suzanne Titus  
Molly Toberer  
Judy Torrens  
Jim and Susan Tracy  
Dorothy and Dean Tuma  
Kent and Linda Tyler  
Phil Pijanowski and Robert  
Ulip  
Jenny Pullen and Karol  
Ulmer  
Robert Urbinati  
Quincy Valencia  
The Vallier Family  
Bill Van Deest and Carol  
Wisner  
Scott Van Den Top  
Ann M. Van Hoff  
Gail and Irv Veitzer  
Thomas and Jennifer Vinton  
Christopher Violett  
Judd and Pat Wagner  
Madeline Wahl  
Shannon and Mike Walenta  
Kathleen Walenta  
Diane and Julie Walker  
Hughston Walkinshaw  
Paula Wallace  
Diane Watson  
Tom and Sue Weidner  
Kate and Roger Weitz

Weitz Family Foundation  
Janet West  
Don Westling and Jo  
Bartikoski  
Mary Wiedman  
Tammy and John Williams  
Nancy Williams  
Stephen Williams  
Gene and Janet Eugene  
Williams  
George Wimmer and Ann  
Beckenhauer  
Dave Wingert  
Keith and Lisa Winton  
Jackee Wise  
Diane Withem  
Karen Wittler  
Casey Wood  
Jay Worden and Timothy  
Held  
Scott Working  
Aaron Wrigley  
Deborah Wyatt  
Patrick Wyman  
Robert Yazowski  
Charlotte Young  
Damian Zuerlein  
Amy and Tim Zweiback



# Queens Theatre and Benson Theatre Present



**May 17, 18, 19 2024**

**Benson Theatre  
6054 Maple Street**

**[www.BensonTheatre.Org](http://www.BensonTheatre.Org)**



**SEASON 99 CONTINUES IN 2024!**

# THE PLAY THAT GOES WRONG



JAN. 26–FEB. 18, 2024

**HAWKS**

| By Henry Lewis, Henry Shields, and Jonathan Sayer  
Directed by Susan Baer Collins



# CABARET

FEB. 23–MARCH 30, 2024

**DREW**

| Music by John Kander | Lyrics by Fred Ebb  
Book by Joe Masteroff | Directed by Alex Rodriguez



omahacommunityplayhouse

(402) 553-0800 | [OmahaPlayhouse.com](http://OmahaPlayhouse.com)

6915 Cass St. Omaha, NE





# FILM STREAMS™

RUTH SOKOLOF THEATER  
DUNDEE THEATER

Join Omaha's premier nonprofit arthouse cinemas to engage in a variety of programs within five principal areas:

- ▶ NEW RELEASES
- ▶ CLASSICS
- ▶ COMMUNITY ENGAGEMENT
- ▶ EDUCATION
- ▶ SPECIAL PROGRAMS

FOR SHOWTIMES AND  
MORE SCAN OR VISIT  
[FILMSTREAMS.ORG](http://FILMSTREAMS.ORG)



**RUTH SOKOLOF THEATER**  
1340 MIKE FAHEY STREET  
OMAHA, NE 68102  
[FILMSTREAMS.ORG](http://FILMSTREAMS.ORG)

**FILM  STREAMS™**

**DUNDEE THEATER**  
4952 DODGE STREET  
OMAHA, NE 68132  
[FILMSTREAMS.ORG](http://FILMSTREAMS.ORG)

AN ART FORM · DEVOTED TO THE PRESENTATION AND DISCUSSION OF FILM AS AN ART FORM · DEVOTED TO

# MIDLANDS **business journal**

**Subscribe to the MBJ**

[mbj.com/subscribe](http://mbj.com/subscribe)



**Local Business & Community News  
We got you covered.**

**Midlands Business Journal  
\$7/month**

A full year of MBJ delivered either digitally, in print or both ( 52 issues)

**Insider news for the Omaha metro area including the counties of:  
Douglas, Sarpy, Pottawattamie & Lancaster via mbj.com**

Unlimited access on any device

**Bonus publications including:**

Corporate Giving Guide & Event Book, 101 Things to LOVE about the Omaha metro,  
metroMAGAZINE, 40 Under 40, Book of Lists plus more!

Discounted tickets to MBJ & metroMAGAZINE signature events and more!

**MUSIC THAT MAKES YOU FEEL GOOD!**

# LEGENDARY LINEUP

*Locally Owned & Locally Loved*

**BOOMER!**  
*radio*

94.5 • 1490 • 104.1 • 97.3



[myboomerradio.com](http://myboomerradio.com)



NOW OPEN

THE LAST ACT IS ACROSS THE STREET

**AFTER THE SHOW**, CAP THE NIGHT OFF AT  
**OMAHA'S NEWEST COCKTAIL AND CHAMPAGNE BAR.**

1022 S. 10TH ST.

COCKTAILS • FOOD • CHAMPAGNE