

BLUEBARN THEATRE
SEASON
OF PURPOSE

36



NEW LOCATION! ***Now Open***

10730 Pacific St



GoViaFarina.com

24 | 25 SEASON

CELEBRATE WITH US!

- ▶ Four (or more!) tickets to each regular season show
- ▶ Ticket discounts for Premium Shows
- ▶ Be first in line with priority booking
- ▶ Entry to Member Only events
- ▶ Sneak Peek at summer camp and class schedules

Coraline

SECRET
KINDNESS
AGENTS



MILO
Imagines the World



BECOME A
MEMBER
TODAY!



PREMIUM

DIARY
of a
Wimpy Kid
THE MUSICAL



75 YEARS
of family fun!



www.rosetheater.org

A CHANTICLEER COMMUNITY THEATER PRODUCTION



Presented by
Sherry G. Billis-Taylor

DECEMBER 12-15 & 19-22, 2024
THU-SAT 7:30PM & SUN 2PM

Purchase Your Tickets Now!



HOFF FAMILY ARTS & CULTURE CENTER
PACEARTSIOWA.ORG / 712.890.5601

When you're downtown...
Try the RICHEST Around!

Ted &
Wally's
= ICE CREAM =

OLD MARKET
1120 Jackson St
(402) 341-5827

BENSON
6023 Maple St
(402) 551-4420

OMAHA, NE • EST 1986



@tedandwallys

Hiley Hunt

WEALTH MANAGEMENT

WEALTH MANAGEMENT FOR WIDOWS



**You built a life together.
Planned a future.**
Then suddenly you're on your own.

402.504.9347 | HILEYHUNT.COM

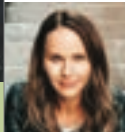


402 671-0396 | www.FinesseOmaha.com



Finesse was born from the desire to provide quality, safe and conservative aesthetics treatments. It takes years of experience, a discerning eye and a willingness to listen to what a client needs to feel and look their best.

Don't trust your face to just anyone.



Leanne Carlson, PA-C

With 17 years of expertise in Botox, Fillers, RF Microneedling, and other Medical Grade Skin Care Needs

Proud Supporter of the BLUEBARN Theatre



OCT 18 & 20 **DON GIOVANNI**
FEB 7 & 9 **THE RAKE'S PROGRESS**
MAY 1 **GIULIO CESARE**
JUNE 5-8 **FANTASTIC MR. FOX**

OPERAOMAHA.ORG/24-25



BLUEBARN THEATRE VALUES

AT BLUEBARN, WE MAKE OUR VALUES CENTRAL TO HOW WE WORK AND CREATE TOGETHER.
THIS LIST OF VALUES IS ONGOING AND EVER CHANGING AND WILL EVOLVE AS WE DO.

We empower each other to try new things and be confident in their choices.

We crave meaningful discussions that teach us how to keep improving.

WE WILL CREATE A SAFE
SPACE FOR BOLD
ARTISTIC CHOICES.

We believe there is always more to learn.

We believe in challenging how we think, propelling us toward a future enriched by continuous learning & creative exploration.

We believe in change through the arts and by listening to one another.

We take pride in welcoming and supporting our artists' authentic selves.

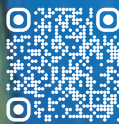
We endeavor to create a safe space that encourages creativity, individuality, and bold thinking.

We work to make everyone feel welcome.

BLUEBARN THEATRE
SEASON
of PURPOSE

30

CHOOSE LIVE THEATRE
BLUEBARN.ORG
402-345-1576
1106 S. 10TH ST. OMAHA NE



ART BY KRISTIN PLUHACEK

DRACULA

The Journal of Jonathan Harker

ADAPTED BY JIM HELSINGER

OCTOBER 3 -
OCTOBER 27, 2024

SILENT NIGHT
OF THE LAMBS

BY RYAN LANDRY

NOVEMBER 29 -
DECEMBER 22, 2024

Appropriate

BY BRANDEN JACOBS-JENKINS

FEBRUARY 6 -
MARCH 2, 2025

THE NIGHT
Larry Kramer
KISSED ME

BY DAVID DRAKE & BASED IN '80S AMERICA

MARCH 27 -
APRIL 19, 2025

THE WILD PARTY

BOOK, MUSIC, AND LYRICS BY ANDREW LIPPA

MAY 22 -
JUNE 22, 2025

Memberships on sale through the run of *Dracula*.

Bought a ticket to *Dracula* and want to become a member? Visit the Box Office to roll your ticket into the price of a new membership.

TRUBLU MEMBERSHIP PERKS



A TICKET TO **ALL 5 MAINSTAGE PRODUCTIONS**

Reserved Seats FOR BLUEBARN MAINSTAGE PRODUCTIONS

Reserved Seats FOR YOUR GUESTS WHO ATTEND WITH YOU

Advance reservation WINDOW BEFORE GENERAL PUBLIC ON-SALE

15% savings OVER PURCHASING SINGLE TICKETS

One complimentary drink TICKET PER MEMBER

Discounted tickets for Film Streams 2024-25

NATIONAL THEATRE LIVE SERIES IN PARTNERSHIP WITH

FILM  STREAMS.



Scan the QR code or stop by our box office to become a member today!



BLUEBARN THEATRE
PRESENTS

OCTOBER 3 - OCTOBER 27, 2024

DRACULA

The Journal of Jonathan Harker

ADAPTED BY JIM HELSINGER

ACKNOWLEDGMENTS

Dracula: The Journal of Jonathan Harker was originally produced as a workshop by Cape May Stage (Michael Laird, Artistic Director) in Cape May, New Jersey from October 26-30, 1994. The artistic team was as follows:

JONATHAN HARKER Jim Helsinger
Director Eric Hissom
Stage Manager John Alvarez

The world premiere was produced by the Orlando Shakespeare Theater in partnership with UCF, in Orlando, Florida from October 13-31, 1995. The artistic team was as follows:

JONATHAN HARKER Jim Helsinger
Director Michael Carleton
Scenic Design Bob Phillips
Lighting Design Eric Haugen
Sound Design Jim Helsinger
Costume Design Fred Rogers
Stage Manager Mark Rector
Assistant Stage Manager Marc Collins

SHOW SPONSORS

Friends of BLUEBARN

SEASON 36 SUPPORTERS

HOLLAND
foundation

Fred & Eve Simon
Charitable Foundation

THE **SHUBERT**
FOUNDATION

Giger Foundation

Mammel
Foundation

Webster Family Foundation

David & Jane Offutt

Amy Haddad & Steve Martin

MAVENSOCIAL

94.5
BOOMER!

valmont 



Would you or your company like
to sponsor a BLUEBARN production?

Contact Heather at 402.345.1576 x6 or hhoyt@bluebarn.org.

BLUEBARN has made every effort to make each performance experience as friendly as possible from a sensory, emotional, and atmospheric standpoint, and we acknowledge that sensitivities may vary from person to person. Please find our experiential advisory in the **WHAT TO EXPECT** section toward the back of our playbook.

Dracula: The Journal of Jonathan Harker

DIRECTOR'S NOTES

Against a background of late-Victorian industry and invention, burgeoning medical and scientific advancement and volcanic social change, Bram Stoker created "Dracula" - a wild story of vampirism, romance, murky folklore, dark gothicism and strange science fiction. Along with sharks and tornadoes, vampires are a subject that NO ONE can resist. In fact, I can imagine few subjects as popular. The story of "Dracula" has been told in myriad ways through countless mediums. What a delight then to boil it down to a single story teller and a few musicians and what a lark it is for me to have the opportunity to approach the fantastical story again after an earlier production of the play that I directed for the Joslyn Castle Literary Festival in 2014. Though a remounting, this production is transformed and reinvented through the unique talents and gifted artists of the BLUEBARN Theatre. Sincerest gratitude to all who have labored to make this show vivid and compelling - we hope it is exactly what you crave this Halloween season!

Jill Anderson

NOTES FROM THE BOARD PRESIDENT

It is my honor and privilege to welcome you to Season 36 at the BLUEBARN, my first season as board President, but one of many as an enthusiastic fan! I am grateful for the opportunity to work alongside the Board to support the work of this special place, led by our fearless Producing Artistic Director, Susan Clement, and our talented staff and artists.

I'm especially excited to share the first production of the season with you - Dracula! Dracula is an iconic tale that has captivated audiences for generations. Its significance in society extends far beyond the chilling narrative. The original work was written during the late Victorian era, and reflects the social and cultural anxieties of its time. It explores themes of fear - of change, progress and the unknown - and symbolizes the eternal struggle between good and evil. It's a story for our time.

At BLUEBARN, we are committed to creating a space where our community can come together to experience the magic of live theatre. This season, we are excited to share incredible stories of laughter, struggle, reflection, joy...and PURPOSE.

Thank you for your continued support. Your presence here tonight is a testament to the enduring power of the arts and the vital role that theatre plays in our lives.

Enjoy the show!

Laura Peet Erkes

CAST

Aaron Zavitz	Jonathan Harker
Jill Anderson	Soundscape Artist
Jesse Wohlman	Soundscape Artist

PRODUCTION CREATIVES

Director, Costume Designer, & Propmaster	Jill Anderson
Director of Production & Props Artisan	Amy Reiner
Dramaturg	George Mihai
Stage Manager	Nic Jansen
Scenic Designer	Martin Marchitto
Lighting Designer	Mason Nicks
Sound Designer	Jill Anderson, Jesse Wohlman, Bill Kirby
Scenic Artist	Craig Lee
Sound Board Operator	Mindy Cotner
Master Electrician	Sally Grosenbach
Master Carpenter	Shane Staiger



BLUEBARN Theatre is an Associate Member of the National New Play Network.

NNPN is an alliance of professional theatres across the country that are evolving and exploring the frontiers of the American theatre. **BLUEBARN** has long been Omaha's home for professional contemporary theatre, bringing diverse perspectives, new voices, and provocative work to our community. The **National New Play Network** has become the most powerful, growing force in new play development, production, and promotion in the nation.

BLUEBARN is committed to seeking out collaborative relationships with other NNPN member theatres, producing and supporting the work of the most dynamic emerging voices in contemporary playwrighting, and promoting local artists on a platform with national reach.

To support New Play Development at the **BLUEBARN**, contact Susan at sclement@bluebarn.org.
To learn more about **NNPN** and its programs, visit NNPN.org.

Biographies

CAST



Aaron Zavitz – *Jonathan Harker*

Aaron Zavitz has been a professional actor in Omaha for over 20 years but surprisingly has only been on the BLUEBARN stage a handful of times. Once for *Fuddy Meers* playing Limping Man, secondly playing Valentine in *Arcadia*, another time as Felix in the Brigit Saint Brigit/BLUEBARN partnership show of *The Odd Couple*, playing David Frost in *Frost/Nixon* and most recently as the main actor in BLUEBARN's production of Will Enos' *Wakey Wakey*. His primary work has been with the Brigit Saint Brigit Theatre where he's had lead roles in such plays as *Glass Menagerie*, *Philadelphia Here I Come*, *Doubt*, *Shining City*, and *Faith Healer*, among others. He received his Bachelor Degree in Fine Arts/ Dramatic Arts from UNO. He is also a playwright. His play *Tour of the Well Kept House* received a staged reading at the 2007 Great Plains Theatre Conference and was critiqued by Edward Albee, Will Eno, Arthur Kopit and Romulus Linney. Although the panel 'ripped him a new one' for his play (except for Will Eno), he received his first Nebraska Arts Council Award for playwrighting for *Tour of the Well Kept House*. In 2012, he received his second Nebraska Arts Council award as well as a TAG Award for Best Original Script for his play *Intelligentsia* that the Shelterbelt Theatre produced. He's also co-written, directed and been cinematographer for a few short films and a full length feature film. With his lovely wife Molly, he is the co-owner of thinkMOTION, a local video and photography company. They have two imaginative and creative children, Alexandria and Adrien. When asked to act in the title role in *Dracula* his first reaction was throwing up in his mouth a little bit and his second reaction was to move his family out of state. However, with the encouragement of his family and the belief in his talent from his Director and BLUEBARN staff, he humbly took this wonderful challenge. He thanks his family most of all for helping him with his lines and their patience while he walked around the house muttering to himself like some mantic shape shifter...being an actor is a bit of insanity! Enjoy!





Jill Anderson – *Soundscape*

Jill Anderson, an Omaha native, has had a long career in the arts working primarily as a singer, actor, director and educator. Her performance career has spanned the United States with theatre and concert appearances in venues as varied as the Library of Congress in Washington, DC to an abandoned train station in Omaha, Nebraska. Besides professional theatre, concert and cabaret work, Jill has acted as Artistic Director for the Joslyn Castle Literary Festival, recorded four CDs of Irish folk music, and created theatre projects for people with developmental disability through Omaha's Ollie Webb Center. Jill's association with the BLUEBARN Theatre spans its entire history and her involvement in BLUEBARN productions has been ongoing. Her various roles have been as a performer, director, writer and costumer. She is thrilled to have this opportunity to tread the BLUEBARN boards once again!



Jesse Wohlman – *Soundscape*

Jesse Wohlman is a singer, actor, songwriter, and private instructor based in Omaha, Nebraska and he is thrilled to be back at the BLUEBARN for his second project. You might have seen him last at the BLUEBARN in the summer of 2021 as a featured artist for *Sunset to Starlight*, an outdoor musical revue intended to help reintroduce audiences to live theatre after the lockdown brought about by Covid-19. As a composer and sound effects artist, Jesse has had the pleasure of working with a number of organizations including Nebraska Wesleyan University (*Mother Courage and Her Children*), The Rose Theater (*Wynken, Blynken, and Nod*), and the Ollie Webb Center Inc. (*The White Gander, Morozko*). Mr. Wohlman is a music faculty member at Concordia University, Nebraska and a theatre faculty member at Nebraska Wesleyan University. Please enjoy the sights and sounds of *Dracula: The Journal of Jonathan Harker!*

Biographies

CREATIVES



George Mihai

Dramaturg

George Mihai is excited to have his dramaturg debut at the BLUEBARN theater. He is a native of Bucharest, Romania, but has spent the last few years in Nebraska. He studied history and anthropology in Romania, followed by degrees in physics and chemistry in the United States. He is bringing a deep passion for history, tradition and odd history to an outstanding take on the *Dracula* story.



Martin Scott Marchitto he/him

Set Designer

Martin is excited to be returning to the BLUEBARN for it's 36th season! His previous set designs include: *Macbeth*, *Reefer Madness*, *In the Next Room*, *The Vibrator Play*, *Hir* and many more! Martin is an award-winning designer whose notable credits include; Off Broadway *Mack the Knife*, *The Life and Times of Bobby Darin*; *The Theatre at Saint Peters*, *Lightnin Out: The Judith Anderson*. Regional credits include *Sweeney Todd: Opera Omaha*, Associate Designer for *Big River* and *The Foreigner: Utah Shakespeare Festival*, *My Three Angels*, *Broadway*, *The Last of the Red Hot Lovers: Studio Summer Theatre*, *Riggaletto*, *The Tenderland: Opera North*, *Elixir of Love: Illinois Opera*, *Shooting Stars*, *The Pirates of Penzance: Illinois Repertory Theatre*, and *Sweeney Todd* for Opera Omaha He is a regular set designer for the Ivoryton Playhouse and Curtain Call Theatre in CT. Martin teaches and serves as Players Director for Manhattan University.



Mason Nicks

Lighting Designer

Mason just moved to Nebraska and is so excited for *Dracula* to be his first design in the area! He is coming from Emporia, Kansas where he received a BFA in Theatre. In Emporia, Mason designed the lighting for shows such as *God of Carnage*, *Urinetown*, *Endgame*, *House of Blue Leaves*, and many more. He has also acted as the Technical Director for shows including *God of Carnage*, *the Underpants*, and *the Constant Wife*. Mason would like to thank the BLUEBARN for the opportunity to create, and his incredible wife Joslyn for her undying support.

Craig Lee he/him/his Scenic Artist

Mr. Lee has lived in the Midtown area of Omaha since 1985. His work has appeared on virtually every local live theatre stage since then, as well as in movies, television and in publications. He has worked with the finest designers in the area on countless shows and has painted indoor and outdoor murals all over Omaha. At his studio he has completed commissioned paintings, drawings, and production designs. He has taught scenic painting and worked with students on many university productions. He has proudly supported and collaborated with BLUEBARN Theatre for much of its existence and is extremely fortunate to call the talented, passionate professionals who work here some of his very best friends.

Mindy Cotner she/her/hers Sound Board Operator

Mindy has been involved in Omaha-area theater since age 11, first appearing onstage as Lullaby League #2 in a production of *The Wizard of Oz*. After earning a B.F.A from the University of Nebraska Omaha Writer's Workshop, she came to roost in technical theater and discovered the joys of working on the "dark side." Favorite productions in her 20 seasons with BLUEBARN include *The 39 Steps*, *Spring Awakening*, and *Every Brilliant Thing*. She has also worked on several productions with the Ollie Webb Center's *Art of Imagination*, appearing onstage as the Banshee and Selkie Queen in *Fear Liath*, and running follow spot for *The White Gander* and *Morozko*.

RESIDENT CREATIVES

Susan Clement she/her Producing Artistic Director/CEO

Susan has served as BLUEBARN's Producing Artistic Director since 2002. She has directed numerous productions at the BLUEBARN, beginning with *The Night Larry Kramer Kissed Me* in 1993. OEAA Awards – Best Director: *Red Summer* (2020), *Indecent* (2019) *The Resistible Rise of Arturo Ui* (2018), *Our Town* (2015), *39 Steps* (2013), *Spring Awakening* (2012), *Seascape* (2008); Best Play - *Our Town* (2015), *Red* (2013), *The Pillowman* (2006). As director of the BLUEBARN, Susan alongside Shannon Walenta (Managing Director at the time) spearheaded the capital campaign that enabled the BLUEBARN to build its own stand-alone theater and saw the dream fulfilled when BLUEBARN moved into its new home at 10th and Pacific in 2015. Susan holds a B.F.A in Theatre/Film from the State University of New York at Purchase Conservatory.

Biographies

RESIDENT CREATIVES CONTINUED

Amy Reiner she/her

Director of Production and Props Designer

Amy joined the BLUEBARN in 2012 as Production Manager and Properties Master. Amy went to college at the University of Nebraska-Lincoln where she received a B.F.A. in technical theatre with an emphasis on Scenic and Lighting Design. After leaving Lincoln, she spent three years freelancing in Los Angeles in the fields of film and television. Returning to her hometown of Omaha in 2000, she worked as Properties Master for 12 years at The Omaha Community Playhouse where some of her favorite shows were *Violet*, *The Battle of Shallowford*, and *The Fantasticks*. Some of Amy's favorite BLUEBARN shows include *Red*, *American Buffalo*, *the 39 Steps*, and *A Very Die Hard Christmas*. In her free time, Amy enjoys volunteering at a few places including HETRA, a Gretna-based equine therapy program. She especially loves her fur children Ethel, Norman, Pearl and Rose, as well as her goldfish Sylvester, Tweety, and Granny.

Bill Kirby he/him

Technical Director and Sound Designer

Bill joined the BLUEBARN staff as the Resident Creative and Technical Director in 2019, after working as a freelance designer for the two previous seasons. Favorite BLUEBARN productions include *Venus in Fur*, *Wakey, Wakey, Indecent* (OEA Award for Outstanding Sound Design), and *Red Summer* (OEA Award). Before relocating to Omaha in 2017, Bill spent 10 years as the resident sound designer and head sound engineer at Princeton University's McCarter Theatre Center. Bill's favorite McCarter productions include sound designing the original workshop production of Danai Gurira's *Eclipsed* and serving as the production sound engineer for the world premiere of Christopher Durang's *Vanya and Sonia and Masha and Spike*, which would go on to win the 2013 Tony Award for best play. Kirby has worked nationally and internationally, including productions at the New York Fringe Festival, LA's Kirk Douglas Theatre, the Wuzhen Grand Theatre in China, and the Repertory Theatre of St. Louis. Bill is a graduate of the Royal Welsh College of Music and Drama. **web:** kirbysound.live

Nic Jansen he/they

Patron Services and Resident Stage Manager

Nicholas A. Jansen is a stage manager, actor, director, and playwright. They hold a B.A. in Theatre from the University of Nebraska at Omaha. They are the President of the Board of the Omaha Fringe Festival, where they also volunteer as Co-Marketing Coordinator. Nic is passionate about the healing and transformative power of the arts and providing creative experiences to those who may not otherwise have access to them. Nic's recent stage management credits include *Dozynki* (2023-Ollie Webb Center, Inc.) *The Wise Men of Chelm* (2023-Circle Theatre), and *Boy* (2024 Snap! Productions). Nic recently got back on the stage, performing in *The Disability Plays* at the Benson Theatre in May 2024, they will also appear in *Macbeth* with Old School Shakespeare Omaha in November.

BLUEBARN STAFF & BOARD

Susan Clement

Producing Artistic Director/CEO

Erika Sieff

Managing Director

Amy Reiner

Director of Production and Properties Master

Heather Hoyt

Director of Development and Marketing

Bill Kirby

Resident Creative and Technical Director

Carrie Nath

Director of Equitable Access

Francisco Franco

Performance Coordinator and Rental Manager

Nic Jansen

Patron Services and Resident Stage Manager

BOARD OF DIRECTORS

Laura Peet Erkes, President

Robert Peters, Treasurer

Sara McClure, Secretary

Ethan Bondelid

Jannette J. Davis

Devin J. Fox, MD

Sara Foxley

Jim McKain

Susan Clement (ex-officio)

Follow Us!



Facebook.com/BLUEBARN



@bluebarntheatre_omaha



@bluebarntheatre



@bluebarn.theatre

THANK YOU

AL MARCAULT

DANIEL TOBERER

OMAHA COMMUNITY PLAYHOUSE - ANDREW MORGAN

UNIVERSITY OF NEBRASKA LINCOLN - BRAD BUFFUM

WESLYAN UNIVERSITY - JULIE WILSHUSEN

CARLA AND DALE ROBINSON

NANCY HASSE

MCKENNA YOUNG

DEMI EDGELL

HARGISS STRINGED INSTRUMENTS - JOHN HARGISS

KEVIN BARRATT

SARAH ROWE

LAND ACKNOWLEDGMENT

The BLUEBARN Theatre stands in honor of the first inhabitants and our ancestors. We acknowledge the land on which The BLUEBARN stands – the unceded territory of the Umonhon (“um AHhah”) and ochethi Sakoiwic. We acknowledge the painful history of genocide and forced removal from this territory. We honor the generations of stewards, and we pay our respects to the many diverse Indigenous peoples still connected to this land.

Visit native-land.ca to discover the native land on which you reside or currently find yourself.

ANTI-RACISM ANTI-OPPRESSION ETHOS

BLUEBARN Theatre owns that systemic racism is real, always at play, and intersects with multiple systems of oppression and that all must be fought against wherever and however they show up - in our community, in our theater, in ourselves.

ANTI-HARASSMENT & INCLUSION

BLUEBARN Theatre is committed to fostering a culture of civility, dignity, and respect as a right and responsibility of all who walk through its doors. Employees, guest artists, volunteers, and patrons are entitled to and responsible for maintaining an environment of mutual trust - free from intimidation, exploitation, harassment, and discrimination. Offensive, abusive, or unwelcome verbal or physical conduct will not be tolerated. Adhering to this standard is vital to the BLUEBARN's mission.

DIVERSE AUDIENCE PRACTICES PRINCIPLE

Hospitality has always been one of BLUEBARN's core values. Welcoming you to this space is our great joy. You are invited to bring your full self to the experience. Audible reactions and responses are absolutely welcome. For some people, this is church, for some a meditative space, for others an escape, and we invite you to respect the ways that others engage in the experience based on their individual or cultural practices. By gathering at the BLUEBARN, you have committed to a shared experience in community with others, free from etiquette shaming, microaggressions, and entitled behavior.

ACCESS

BLUEBARN Theatre is committed to ensuring that our boundary-breaking theatre is accessible to everyone. We are committed to easing cost barriers for young professionals and students. We are committed to providing low-cost, last-minute opportunities for anyone to see a show. We are committed to recognizing those who give the most in service to our community.

BLUCREW - YOUNG PATRON DEVELOPMENT PROGRAM

Anyone 35 or under is eligible. Members receive discount pricing for most Sunday and Thursday shows throughout the season with no upfront cost. Contact Nic Jansen at njansen@bluebarn.org to join BLUCrew.

RUSH TICKETS

Every unsold seat. Every show. \$20. Available only at the box office, 45 minutes before curtain. If we're not sold out, you have a new way in.

NEBRASKA EDUCATORS, HEALTHCARE WORKERS, AND MILITARY PERSONNEL

\$4 off all tickets. All the time.

RADICAL HOSPITALITY

Sometimes you need a break. It doesn't matter why. For pay-what-you-wish tickets to any show, contact Nic Jansen at njansen@bluebarn.org.

ASSISTED LISTENING DEVICES

are available at the box office for mainstage productions. BLUEBARN also utilizes Listen Everywhere, a smartphone application that allows you to stream audio directly to your own headphones and Bluetooth-compatible hearing aids. Please find our box office staff for help or scan the QR code provided.



AMERICAN SIGN LANGUAGE PERFORMANCE

An ASL performance is offered for *Dracula* on Friday, October 18.

AUDIO DESCRIPTION SERVICES

are provided through Radio Talking Book Service upon request. Please call the box office in advance to request this service.



SENSORY KITS

are available at the box office.



To request these or additional accommodations, or for more information, please call (402) 345-1576 or email Nic Jansen at njansen@bluebarn.org.

A Special Weekend with Dacre Stoker Celebrated Author and Great Grand Nephew of Bram Stoker



127 Years of Dracula from Myth to Movies and Much, Much More

Friday, Oct 4 | 12:00 pm – 1:00 pm

Location: UNO Weber Fine Arts Building

Host: Carrie Nath



UNIVERSITY OF NEBRASKA AT OMAHA
SERVICE LEARNING ACADEMY

All aboard for a fast-paced survey originating with actual vampire hysteria of the 1700's in Europe through vampires in literature, on stage, movies, television, musicals, opera, and merchandise.

What's Vlad Got To Do With It

Friday, Oct 4 | 6:00 pm – 7:00 pm

Location: BLUEBARN Lobby

Host: Carrie Nath



UNIVERSITY OF NEBRASKA AT OMAHA
SERVICE LEARNING ACADEMY

The inseparable connection between the historic Vlad Dracula III and fictional Count Dracula. Take a tour through both medieval and modern-day Romania investigating the fact and fiction surrounding Bram Stoker's novel *Dracula*. Book signing of Dacre's co-authored *Dracula of the Undead*, the only sequel to Bram's *Dracula* approved by the Stoker Estate to follow.

Dark Tales After Hours / BLUEBARN Theatre

Friday, Oct 4 | 9:15 pm – 10:30 pm

Location: BLUEBARN Patio

Hosts: Todd Richardson, Carrie Nath



UNIVERSITY OF NEBRASKA AT OMAHA
SERVICE LEARNING ACADEMY

Throughout the Fall, BLUEBARN Director of Equitable Access, Carrie Nath, and Todd Richardson, Ph. D., professor of folk and historical literature and a member of the Goodrich Scholar Faculty, worked with Goodrich Scholars to explore the monsters of our current time. Gather around the bonfire out back to hear these chilling tales, inspired by Hillgren's letter format. Sure to reach deep into your soul in the dead of night.

For full engagement info: bluebarn.org/engagement

SARO Cider / BLUEBARN Theatre

Monsters and Demons and Ghouls, Oh My! Trivia Night



Wednesday, Oct 9 | 7:00 pm – 9:00 pm

Location: SARO Cider | 1012 S 10th St, Omaha, NE 68108

Hosts: Bill Grennan and Ben Beck

A spine-chilling evening of the most notorious specters and evil-doers! Where does Dracula's fictional castle lie? What inspired Shelley to put Frankenstein on the slab? Which Victorian felon inspired the notorious Dr. Jekyll and Mr. Hyde? This, and more, will come to light - or should we say, reveal itself in the dark? Beware the night and brave the shadows for an evening of...what's that?! I...AAAAAGGGGH!!!!

1st Place team: 2 single tickets for Dracula & SARO Beanie and Brews

2nd Place team: \$25 gift card to SARO Cider

Afterwords: Madness – Horror and the Stigmatization of Disability

Thursday, Oct. 10 | Directly following the show

Location: BLUEBARN Theatre

Moderator: Carrie Nath

Featuring Guests: Adam Owsinski, Slavic folklore and research philosopher of Melbourne Australia; George Mihai, Romanian Scholar and Dramaturg; Kristin Walstad, Program Director, National Alliance for Mental Illness, Nebraska

Disability has a long and arduous history with depictions of horror on stage, the big screen, and in literature. Cast yourself into the fray as we discuss the stigmatization of disability through the horror genre and the prevalent examples of disability in one of literature's most villainous monsters.

Afterwords: Post-Show Chat with Cast & Creatives

Friday, Oct. 18 | Directly following the show

Location: BLUEBARN Theatre

Moderator: Carrie Nath

90 minutes, 38 pages, 13 creatives and 1 actor. A literal Tour de Force of Terror. How do they do it? Join Aaron Zavitz and the production creatives to unearth the mysteries unfolding onstage. From wild wolf packs to sexy succubus – all the ravenous creatures of the night – we will bury ourselves in this tumultuous foray into the life of a bloodsucking fiend. Garlic, crucifix, and silver bullets optional.

Afterwords: The Sounds of Horror

Friday, Oct. 25 | Directly following the show

Location: BLUEBARN Theatre

Moderator: Jill Anderson

Featuring Guests: Jesse Wohlman, Bill Kirby

Sound is a very important element in theatre. How was it conceptualized and invented for *Dracula: The Journal of Jonathan Harker*? Jill Anderson, Jesse Wohlman, and Bill Kirby will discuss how they have created their vivid soundscape for this production. From recorded music and sound effects, driving live percussion, foley, vocal improvisation, and a dozen different “bells and whistles”, the story is brought to vivid and atmospheric life through sound. Don't miss this fascinating discussion.

IN THE BLUE – *Bloody Good Bindings*

Book selection curated by our partner **The Next Chapter**

Location: BLUEBARN Lobby (Payment through Venmo)



A collection of terrorizing tales and the stories that made them. Feminist witches, surviving the horror of queer conversion camps, Southern Vampire slayers and the only approved sequel to Stoker's *Dracula*. There is plenty to keep you awake at night. Welcome to our literary lair - BWAHAHAHAHAHAHA

ART IN THE BLUE / “*A Light in the Dark*”

Art Exhibit: Curated by Josh Brown and Lallaya Lalley

Location: BLUEBARN Mammel Lobby | During the run of *Dracula*

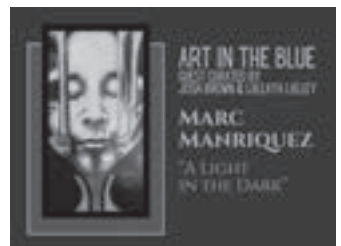
Featuring Artist: Marc Manriquez

Pre-Show Art Chat with Curator, Josh Brown

Friday, Oct. 11 | 6:30 pm, before the 7:30 pm show

Please join us for a pre-show conversation with Josh and dear friends as they share stories in honor of their friend and artist, Marc Manriquez.

The exhibit will be open to the public 45 minutes before each show and during box office hours Monday-Friday 10 am-4 pm in the BLUEBARN Lobby.



BLUEBARN THEATRE

SEASON CONTRIBUTORS

July 1, 2023 – September 15, 2024

INSTITUTIONAL GIVING

\$25,000+

Douglas County
Holland Foundation
The Sherwood Foundation
Shubert Foundation
The Fred and Eve Simon Charitable Foundation

\$10,000-\$24,999

Mammel Foundation
Adah and Leon Millard Foundation
Mutual of Omaha
Nebraska Arts Council (NAC)
Omaha Steaks International
Weitz Family Foundation

\$5,000-\$9,999

Anonymous
First National Bank
Gilbert M. and Martha H. Hitchcock Foundation
Great Plains Theatre Commons

The Webster Family Foundation
Valmont Industries, Inc.
Whitmore Charitable Trust

\$1,000-\$4,999

Baer Foundation
Big Muddy Workshop, Inc.
Burlington Capital Foundation
Dundee Bank
Eleanor
Giger Foundation
Heider Family Foundation
Highline Warren
Social Cinema Foundation

\$10-\$999

CoCreate Change, PLLC
Kiewit Companies Foundation
PayPal Giving Fund
US Bank

INDIVIDUAL GIVING

Visionaries (\$15,000+)

Rob Block and Devin Fox
David and Jane Offutt
Bruce Reneaud and Kerry Dobson

Masterminds (\$10,000-\$14,999)

Sara Foxley
Amy Haddad and Steve Martin
Carter and Vernie Jones
Ray Kawaguchi and Nancy Gilliland

Innovators (\$5,000-\$9,999)

Jannette Davis
Rich and Fran Juro
Emily Kean and Ron Widman
Laura Peet Erkes and Cory Erkes
Annette and Paul Smith

Renegades (\$2,500-\$4,999)

Ethan and Susan Bondelid
Sandi and Bill Bruns
Don and Rita Otis
Jay Worden and Timothy Held

Rebels (\$1,000-\$2,499)

Anonymous
Duane and Clare Baylor
Marilyn Fox
Christine Weeks and Dan Foy
Dan Gallagher and Jeff Grinnell
Elizabeth Hallgren
Ruth Keene
Leslie A. Kuhnel
Lou and Pat Lamberty
Dave Steadman & Sara McClure
Ryan and Rebecca McCreery
James and Kathy McKain
Minier Family Fund
Richard and Mary Parrish
Robert and Barbara Peters
Mel and Ben Teply
Shannon and Mike Walenta

Trailblazers (\$500-\$999)

Clark Christensen
Rosemary Pauley and Tim Daugherty
Mary and Kurt Davey
Betty Foster and Roger Blauwet
Bill Gaus
Deryl F. Hamann
Kim Jubenville
Howard and Gloria Kaslow
George Kleine and Tom Knox
Lynn and Maria Knudtson
David and Vicki Krecek
Sue A. Lawson
Alan Meyer
Robin Behlers and Paul Mileris
James and Bobbie Montequin
Duncan and Rozanne Murphy
Bradley and Lynn Perry
Eileen Sawyers and Jim Grassmeyer
Thomas Stalnaker
Emily Tonniges
Jim and Susan Tracy
George Wimmer and Ann Beckenhauer

Groundbreakers (\$100-\$499)

Bill and Barb Anderson
Dean Arkfeld and Peggy Reinecke
Holly Babitzke
Angela Barry
Michelle Bingham
Doug and Liz Bisson
Cathy Blake
Katie Blesener and John Royster
Amy and Dennis Boesen
Amy Bones
Arlene Burianek
April Butterfield
Daniel and Diana Byrd
Leanne Carlson
John Christensen and Stacie Lamb
Kay and Bernie Clark
Charity Conkle
Tricia Cottrell
Josh Cox and Josh Point
Barbara Dahlhauser
Jeffrey Day
Tony and Claudia Deeb
Jesse and Katie DePriest
Anne Dey
Anonymous
Lori Ecklebe and Tom Shomaker
Steve Ellefson and Chris Rix
Stephen Enke
Alan and Cordie Fisher
Terry and Mollie Foster
Kay Friesen
Mark Manhart and Bonnie Gill
The Grasz Family
Darlene and David Greer
M. Kathlyn Gross
Scott Groth
Aaron Gschwandegger
Cynthia Hadsell
Patrick Haney
Ellen Hargus
Nancy Hemmingsen
Shari Hofschire

Durell Kidd and Ray Hogan
Lori Hokomoto
Gloria Jensen
Mary and Doug Johnson
Johann & Jessica Johnson
Anonymous
Julie Kaminski
Sissy Silber
Jack Becker and Lester Katz
Anonymous
Ray Wood and Mary Keitel
Steve Kenyon and Mary Stolinski
Mary and Tom Kerr
Birgit and Jimmy Khandalavala
Chris and Pam Kilroy
Susan Ann Koenig
Joan and Craig Kramer
Heather Kundert
Laurie Lambert
Dale and Toni Larsen
Guy and Dorothy Lawson
Lyn and Natalie Leach
Richard and Norma LeClerc
Craig Lee
Bill and Nancy Liebermann
Anonymous
Moiria J. Mangiameli
Natalie Manley
Karen and Michael Markey
Wayne and Karen Markus
M E McDaniel
Cathy McManus
Craig Kukuk and A.T. Miller
Steve and Jeanne Miller
Lucia Milone and William Dittrick
Steve Mohr
Bobbie and Bruce Moore
William and Patricia Munro
Lynne Mytty
Karen and Larry Nelsen
David Neumann
Diana Nevins
Robert Ottemann and Kim Kalkowski

Eric Pearson & Lorraine Chang
Dirk and Janice Petersen
Bruce and Deanna Plath
Joshua Point
Jerry and Elizabeth Powell
Francie Prier
Kathleen Rettig
Randle Richardson
Kristen Rinaker
Loui Anne Rinn
Butch and Kathy Roberts
Debra Romberger
Sarah Rowe
Carol and Rick Russell
Dan Schmit
Jeffrey Schweid
Martin and Aveva Shukert
Kendall Ziebarth & Myron Sikora
Todd and Betiana Simon
Jill Slupe
Randy Mousel and Stephen Smith
Mary Eileen Stark
Joni and Jason Street
Mary Stultz
Gregory Swanson
Tony and Christine Swerczek
Jeff and Sherry Taxman
Peg Taylor
Molly Toberer
Katie Twit
Bill Van Deest and Carol Wisner
Cary Ward
Diane Watson
JD Welch
Tracy and John Wells
Don Westling and Jo Bartikoski

Radicals (\$10-\$99)

Janet Acker
Tim and Phyllis Adams
Deb Ady
Ronald Alexander
Susan Baker Conyers
Gary and Eileen Bates

Benjamin Beck
Gregg and Pam Beeman
Karen & Katy Benson
Laila Berre
Karen Bluvas
Paul Boesing
Meghan Boucher
Ann & David Burkholder
Rod Cameron
Jim and Anne Carroll
Anthony and Kim Clark-Kaczmarek
Andrew and Mary Helen Cockle
Susie and Dennis Collins
Kathleen and Greg Combs
Timothy and Rachel Combs
Christopher Cook
Paula Cope
Raydell Cordell
McKenna Cottone
Diane Crouch
Dr. Debra Reilly and Bob Culver
Amy de Meules
Stephen and Suzan DeCamp
Ricardo Delgado
Dan Dixon
Anonymous
Linda Duckworth
Tracy Durbin
Melanie Epps
Myrna Esluer
Teri Fender
Dave Fox
Hal France and Judi Gaiashkibos
Krista Freimuth
Rose Glock
Dwight and Rita Grangenett
DeWayne Greim
William Grennan
Kaye Gurss
Gary and Jane Hagebush
Adrienne Hall
Cathy Hanson
Colleen Heavican Cass

Ida Holliday
Gail Houghton
Deborah Jadhav
Stephanie and Dave Jenkins
Michaela Johnson
Dick and Linda Johnson
Susan Kimball
Bailey Kincaid
Debbie and Steve Krambeck
Coach Kubicek
Dan Miller and Ken Larose
Mary-Lu Larson
Kevin Lawler
John and Renee Lillard
Pat and Bruce Little
Marijo and Fred Malesa
Lara and Craig Marsh
Ryan McCarthy
Camille Metoyer Moten
Maureen Mitchell
Betty Morar
Jason Morong
Sue Moskovits
Howard and Lee Needelman
Donna Neff
Mary Newman
Jimmy Nguyen
Michael and Linda Nichols
Margaret Niebling
Devon Niebling
Amy Niles
Kerri O'Connell
Jeanette Obal
Beth Ostiek Smith
Maya Pacana-Bredenkamp
Linda Patton
Thomas Purcell
Jonathan Purcell
Kathleen Pyper
Erik & Sara Quam
Elizabeth and Robert Recker
Eric Risch
Julie Ryan

Al Salanitro
Jeanne and Pat Salerno
Mark Schulze
Gene and Kathleen Schwarting
Richard Scott
Erika Sieff
Marty Skomal
Sandra Smiley
Olga Smola
Megan Sorensen
Kathleen Stage
Michelle Stark
Cathy Tauke
Gretchen Thomas
Steve Hutchinson and Susan Thomas
Mary Thomsen

Daniel Toberer
Dan and Donna Trombla
Phil Pijanowski and Robert Ulip
Jenny Pullen and Karol Ulmer
Judd and Pat Wagner
Hughston Walkinshaw
Catherine Walling
Nina Washington
Lilly Weak
Mary Wiedman
Gene and Janet Eugene Williams
Dave Wingert
Keith and Lisa Winton
Amy and David Worth
Charlotte Young



The BLUEBARN thrives thanks to the generous financial support of our friends and contributors.

To make a donation, contact Heather Hoyt at 402.345.1576 x 6 or hhoyt@bluebarn.org.

Donate online at bluebarn.org/donate

BLUEBARN THEATRE IN-KIND CONTRIBUTORS

JULY 1, 2023 – SEPTEMBER 15, 2024

Jill Anderson
Boomer Radio
Sandi and Bill Bruns
Leanne Carlson
DJ Sieff Style Entertainment
Ray Kawaguchi and Nancy Gilliland
Amy Lane
Lumen Beer Co
Moirra J. Mangiameli
MAVEN Social
James and Kathy McKain

Metro Community College
metroMAGAZINE
Millard Lumber
Omaha Steaks International
Peegen Reilly
Bruce Reneaud and Kerry Dobson
Saro Cider Omaha
She's Electable
Sips on 10th
The Music House

MEMORIALS & TRIBUTES

IN MEMORY OF

Outdoor Greenspace Lighting Dedicated in Memory of “Skip” Blazek

The Giger Foundation

Megan Terry

Dave and Vicki Krecek

Alice Klein

Amy Boesen

Dutch Haling, a wonderful guy and devoted theater actor extraordinaire

Pat and Judd Wagner

IN HONOR OF

The Marriage of Devin Fox and Rob Block

Holly Babitzke

Gary and Eileen Bates

Jack Becker and Lester Katz

Sue and Mike Borg

April Butterfield

Charity Cockle

Christopher Cook

Josh Cox and Josh Point

Mary and Kurt Davey

Bud Fox and Pat Reddish

Dave and Darlene Greer

Scott Groth

The Grasz Family

Aaron Gschwandegger

Kaye Gurss

Natalie Manley

Amy de Meules

Bruce and Bobbie Moore

Jeanette Obal

Butch and Kathy Roberts

Dan and Jim Schmit

Shelly Stark

Joni and Jason Street

Peg and Barry Taylor

Emily Tonniges

Chris and Pam From Five-Oh Block



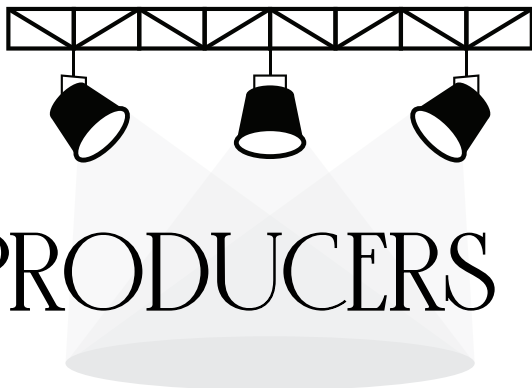
BLUEBARN WISH LIST

- Outdoor Fans
- Sun Shades



Amazon
Wish List at
the QR Code

BLUEBARN THEATRE
SEASON
OF PURPOSE
36



PRODUCERS

BLUEBARN celebrates its Season Producers with PURPOSE, our 36th year of kick-ass theater!

Season Producers are patrons who have made contributions in addition to their TRUBLU memberships. The donations we receive above and beyond our ticket sales and subscriptions are vital to BLUEBARN's artistic success, and to the livelihoods of the artists responsible for that success. Thank you for believing in our work and supporting professional theatre in Omaha.

Anonymous	Ray Hogan and Durrell Kidd	Diana Nevins
Karen and Katy Benson	Deborah Jadhav	Kerri O'Connell
Ann and David Burkholder	Ruth Keene	Linda Patton
Diana Byrd	Ray Wood and Mary Keitel	Thomas Purcell
Leanne Carlson	Mary and Tom Kerr	Elizabeth Recker
Kay and Bernie Clark	Susan Ann Koenig	Kathleen Rettig
Rosemary Pauley and	Joan and Craig Kramer	Eric Risch
Tim Daugherty	Ken Larose	Al Salanitro
Ricardo Delgado	Mary-Lu Larson	Mark Schulze
William Dittrick	Guy Lawson	Sandra Smiley
Dan Dixon	Lyn and Natalie Leach	Randy Mousel and Stephen Smith
Linda Duckworth	Bill and Nancy Liebermann	Kathleen Stage
Alan and Cordie Fisher	Anonymous	Thomas Stalaker
Betty Foster and Roger Blauwet	Marijo and Fred Malesa	Cathy Tauke
Dave Fox	Wayne Markus	Gretchen Thomas
Christine Weeks and Dan Foy	Paul Mileris	Susan Thomas
Rose Glock	Maureen Mitchell	Dan Trombla
DeWayne Greim	James Montequin	Karol Ulmer
Jeff Grinnell and Dan Gallagher	Bobbie and Bruce Moore	Judd Wagner
Cynthia Hadsell	Jason Morong	John Wells
Adrienne Hall	Sue Moskovits	Don Westling and Jo Bartikoski
Ellen Hargus	Lynne Mytty	Dave Wingert
Colleen Heavican Cass	Lee and Howard Needelman	Jay Worden and Tim Held
Nancy Hemmingsen	Karen and Larry Nelsen	Amy and David Worth

Ⓢ BLUEBARN THEATRE

THE ARTISTS' FUND

EST. 2009

At BLUEBARN we believe that artists should be honored for their work not only with applause but with a paycheck. We believe that every theatre artist deserves to be paid fairly for their work, and we are committed to providing payment to every actor or artist working in our theatre. To honor this commitment, BLUEBARN established The Artists' fund in 2009, to support the creative spirits who help continue and propel the life of the BLUEBARN.

We recognize the following donors who have made contributions to The Artists' fund, and we'd like to add your name to this list! If you would like to contribute, please email Heather Hoyt at hhoyt@bluebarn.org, or donate online at www.bluebarn.org.

Janet Acker	Sam Bertino	Maria Caskey
Elias Adams	Doug and Liz Bisson	Pamela Chase
Deb Ady	Big Muddy Workshop, Inc.	Clark Christensen
Ronald Alexander	Katie Blesener and John Royster	John Christensen and Stacie Lamb
Vicki and Steven Allely	Rob Block	Kay and Bernie Clark
Keith Allerton and Becky Noble	Jan Blosser	Anthony and Kim Clark-Kaczmarek
Bill and Barb Anderson	Karen Bluvas	CoCreate Change, PLLC
Cara Anderson	Amy and Dennis Boesen	Babe Cohn
Anonymous	Amy Bones	Susie and Dennis Collins
Judy Archer	Dana and Patricia Bradford	Timothy and Rachel Combs
Dean Arkfeld and Peggy Reinecke	MaryLee Brock	Community Foundation for Western Iowa
Barbara Armstead	Christina Broekemeier	Bruce and Marsha Congdon
John Ashley	Jeanne Brown	David Corbin and Josie Metal-Corbin
Tony and Susan Awender	Stephen and Anne Bruckner	Mindy Cotner
Susan Baker Conyers	Sandi and Bill Bruns	Tricia Cottrell
Barbara Bakhit	Catrice Bryson	Curb Appeal Salon and Spa
Kevin Barratt	William Bucy	Janey Dann
Betty L. Beach	Jean Burggraf	Rosemary Pauley and Tim Daugherty
Benjamin Beck	Arlene Burianek	Mary and Kurt Davey
Carl Beck	Char Bush	David Davidson
Thomas and Lee Belford	Rod Cameron	Susan and David Davies
Gerry Beltz	Larry Carlson	Thatcher Davis
Paul Bennett	Leanne Carlson	Phillip Dawson
Karen & Katy Benson	Debbie Carman	Jeffrey Day
Bob Benzel and Gerry Sullivan	Jim and Anne Carroll	
Laila Berre	Jeff Carstens DDS	

THE ARTISTS' FUND

EST. 1999

Mary Deak
Ricardo Delgado
John and Carol Dennison
Marty and Helen Desilets
Jeff Dickinson
Jaclyn DiGiacomo Oltmans
Alan Dorn
Terry Doughman
Linda Duckworth
Tiffany Dunagan
Maguerite Dunn
Peggy Dunn
Tracy Durbin
Pete Eckerman and Sarah Wengert
Steve Ellefson and Chris Rix
Myrna Esluer
Teri Fender
Ron and Mary Ferdig
Liz Fleissner
Sherry Fletcher
Benjamin Floyd
Jesse and Eileen Fonseca
Betty Foster and Roger Blauwet
James Fowler
Christopher and Lisa Fox
Marilyn Fox
Rob Block and Devin Fox
Sara Foxley
Leslie Frederickson
Nathan Frey
Darrel Frisch
Bill Gaus
Kristine and Jared Gerber
Rodger Gerberding and
Kathy Jurgens
Charlie Gill and Beth Molloy
Mark Manhart and
Bonnie Gill-Manhart
Rose Glock
Susan Goldsmith
Jeff and Danielle Gordman
Dwight and Rita Grangenett
DeWayne Greim
Bobby and Allison Grennan
Margaret Grennan
William Grennan
Dan Gallagher and Jeff Grinnell
M. Kathlyn Gross
Haley Haas
Howard and Carol Hahn
Daniel Hamann
Deryl F. Hamann
Mary Hamilton
Jeni Hamlin
Patrick Haney
Ellen Hargus
Kimberly Harris
Michael and Leslie Harsh
John Hartigan
Constance Heiden
Heider Family Foundation
Nancy Hemmingsen
Team Hesse
Mark Hewett
Denise Hill
Kari Hilliard
Shari Hofschire
Bob Hoppe
Andrea Howard
Jacqueline Hoyt
Julie Huff
Debra & Richard Humble
Richard A. Hunt
John and Nancy Hurley
John and Laura Iloff
Catherine Ingalls
Joanie Jacobson
Stephanie Jacobson
Lynette Anthony and Donna James
Chris Janicek
Grace Janiszewski
Gloria Jensen
Ann Johnson
Kay Johnson
Mary and Doug Johnson
Michaela Johnson
Nakia Johnson
Todd Johnson
Carter and Vernie Jones
Cheri Jones
Coulter Jones
(In honor of Vernie and Carter Jones)
Kim Jubenville
Rich and Fran Juro
Anonymous
Sissy Silber
Nate Kaufman
Ray Kawaguchi and Nancy Gilliland
Steve Kenyon and Mary Stolinski
Mary and Tom Kerr
William and Maureen Kessler
Birgit and Jimmy Khandalavala
Bailey Kincaid
Bill Kirby
George Kleine and Tom Knox
Mogens Knudsen
Merlyn Knudson and James Davis
Ashley Kobza
Susan Ann Koenig
Karen Krall-Murphy
Debbie and Steve Krambeck
Joan and Craig Kramer
Bluestem Prairie Foundation
David and Vicki Krecek
Michael Kreikemeier
Gordon Krentz
Shane Krzycki

THE ARTISTS' FUND

EST. 1999

Marie and Jack Kubat
Leslie A. Kuhnel
Barbara and Marshall Kushner
Lou and Pat Lamberty
Andrea Lang
Kathy Larimer
Dale and Toni Larsen
Kevin Lawler
Sue A. Lawson
Patricia Leaman
Connie Lee
Craig Lee
Gina Leonardo
Karen Levin
Alice Lindsay
Pat and Bruce Little
Anonymous
Marc Lowe
William and Constance Lowndes
Marya Lucca-Thyberg
Mammel Foundation
Don and Maureen Mangan
Moiria J. Mangiameli
Ross and Jill Manhart
Karen and Michael Markey
Doug and Laura Marr
Dennis Martin
Mele Mason
Gerald McAndrew
Gerry and Christy McAndrew
Corey McCallan
Teri McCarthy
Deb and John McCollister
Ryan and Rebecca McCreery
M E McDaniel
George and Carolyn McDonald
Dede McFayden-Donahue
Amy McGaha
James and Kathy McKain
Lauren Medici
R & D Nicklin Memorial Charity
Fund Drive
Alan Meyer
Steve and Jeanne Miller
Lucia Milone and William Dittrick
Minier Family Fund
Steve Mohr
James and Bobbie Montequin
Sue Moskovits
Barbara Motes
Ruth Muchemore
Joshua Mullady
William and Patricia Munro
Marie Murphy
Lynne Mytty
Carrie Nath
Karen and Larry Nelsen
David Neumann
Megan Neville
Diana Nevins
Mary Newman
Devon Niebling
Margaret Niebling
Gail and Nancy Nielsen
Roxanne R. Nielsen
Amy Niles
Helen Nosov
Kerri O'Connell
Thomas O'Brien
David and Jane Offutt
James Ogden
Carolyn Owen Anderson
Richard and Mary Parrish
Brigid Payton
Eric Pearson & Lorraine Chang
Pauline Pechnik
Gail and Mervin Peck
Grant Pedersen
Laura Peet Erkes and Cory Erkes
Bob Perrin
Bradley and Lynn Perry
Peter Kiewit Foundation
Dirk and Janice Petersen
Deb Peterson
Michael Pflueger
M. Michele Phillips
Amber Phillipsen
Westley Pierce
Jim and Kathleen Piper
Bradley and Sara Point
Cecilia Poon
Jerry and Elizabeth Powell
Francie Prier
Caitlin Purcell
Thomas Purcell
Kathleen Pyper
Erik & Sara Quam
Kori Radloff
Ruth Rath
Elizabeth and Robert Recker
Leslie Regan
Pegeen Reilly
M Jean Reiner
Bruce Reneaud and Kerry Dobson
Doug Rennels
Therese Rennels
Barbara Rennert
Anonymous
Robin Richards
The Fred and Eve Simon
Charitable Foundation
Kristen Rinaker
Loui Anne Rinn
Anne and David Rismiller
Christina and Carl Rohling
Marti Rosen-Atherton
John Rosman and Rod Carlson

THE ARTISTS' FUND

EST. 1997

Sky Rotert
Susan Rothholz
Dundee Bank
Sara Rueschhoff
Donald Ruleaux
Carol and Rick Russell
Julie Ryan
Jeanne and Pat Salerno
Eric Sauvage
Deborah Savadge
Eileen Sawyers and
Jim Grassmeyer
Tony Schik
Jo Ann Schmidman
Gene and Kathleen Schwarting
Jeffrey Schweid
Judy Schweikart
Richard Scott
Greg Searson
Betty Segell
Margaret Semin
Theodore Sewell
Shelly Shannon
Robert Sharp
Jeanne Shelton
Chris Sheridan
Chris Shonka
Martin and Aveva Shukert
Mark Siano
Kendall Ziebarth & Myron Sikora
Michele and Peter Silberstein
Ronda Simpson
Marty Skomal
Sandra Smiley
Annette and Paul Smith
Laurie Smith Camp
Susie and Stuart Smoler
Megan Sorensen
Brent Spencer and Jonis Agee
John and Sandy Spessard
Joan Squires
Thomas Stalnaker
Mary Eileen Stark
Meghann Stewart
Jean Stillmock
Kristine Stirn
Erin Strasil Larson
Sara Strattan
Mary Stultz
Erica Sweany
Bronson Sweet
Analisa Swerczek
Tony and Christine Swerczek
Jeff and Sherry Taxman
Mel and Ben Tepy
Steve Hutchinson and
Susan Thomas
Matthew Thompson
Suzanne Titus
Molly Toberer
Judy Torrens
Jim and Susan Tracy
Dorothy and Dean Tuma
Kent and Linda Tyler
Phil Pijanowski and Robert Ulip
Jenny Pullen and Karol Ulmer
Robert Urbinati
Quincy Valencia
The Vallier Family
Bill Van Deest and Carol Wisner
Scott Van Den Top
Ann M. Van Hoff
Gail and Irv Veitzer
Thomas and Jennifer Vinton
Christopher Violet
Judd and Pat Wagner
Madeline Wahl
Kathleen Walenta
Shannon and Mike Walenta
Diane and Julie Walker
Hughston Walkinshaw
Paula Wallace
Diane Watson
Tom and Sue Weidner
Kate and Roger Weitz
Weitz Family Foundation
Janet West
Don Westling and Jo Bartikoski
Mary Wiedman
Gene and Janet Eugene Williams
Nancy Williams
Stephen Williams
Tammy and John Williams
George Wimmer and
Ann Beckenhauer
Dave Wingert
Keith and Lisa Winton
Jackee Wise
Diane Withem
Karen Wittler
Casey Wood
Jay Worden and Timothy Held
Scott Working
Aaron Wrigley
Deborah Wyatt
Patrick Wyman
Robert Yazowski
Charlotte Young
Damian Zuerlein
Amy and Tim Zweiback

WHAT TO EXPECT

CONTENT BELOW MAY CONTAIN SHOW SPOILERS

ARRIVAL

Welcome to The BLUEBARN Theater. When you arrive, you will enter the lobby. Pre-show music at medium levels and medium lighting set the atmosphere. The box office is directly to your left. You do not need physical tickets. You will need to check in at the box office.

You may request a sensory kit and/or audio enhancement devices at the box office.

Bathrooms are in the hallway to your right from the box office window.

The theater will open one half-hour before the show. The lobby can get lively before the theater opens. If you need a less lively space, the hallway nearest the box office features dimmer lighting and lower sound levels.

You will enter the theater from a medium-lit hallway across the lobby from the box office. The theater is proscenium style. There are 96 seats. You may sit anywhere that's not taped off for our season members.

If you need a break during the show, a live feed of the show will be projected on a screen located above the box office.

EXPERIENTIAL CONTENT ADVISORY

BLUEBARN has made every effort to make each performance experience as friendly as possible. Below, we've included information that may be helpful based on your interests.

Sound for this production includes live music as well as recorded sound effects. Music and scary sounds including howling and shrieking, will be played in the house (where audience is located) and onstage, at times creating a rumbling, vibratory effect. In addition, loud crashes of thunder and brash, loud clashing of symbols. Bright lighting and flashes of lightening as well as complete blackouts and the utilization of fog and haze occur throughout the show.

The production includes depictions of horror, abduction, isolation, institutionalization, sexual references, descriptions of violent acts, illness, madness, and death. This play uses fake blood and weaponry.

If you should need to leave at any time, please do so using the door at the top of the stairs or, if needed, the exit closest to you in the house. A live feed of the show will be cast on a screen located above the box office.

DONATE TODAY!

Please consider supporting the BLUEBARN with a donation. Your gift will help professional theatre thrive in Omaha and support the heart of our mission: **to provoke thought, emotion, action, and change.**

WAYS TO GIVE

- Look for our **Giving DipJar** in the Lobby and Dip to Donate! Simply dip your credit card for a fun and fast way to give.



- Give Online: bluebarn.org/donate
- Call Us Directly: 402.345.1576 x6
- Drop Your Gift in the Mail:
1106 S 10th St Omaha, NE 68108



1989



2025



NEW YORK BORN - OMAHA RAISED

SILENT NIGHT OF THE LAMBS

BY RYAN LANDRY

ART BY KRISTIN PLUHACEK

**NOVEMBER 29 -
DECEMBER 22, 2024**

A twisted comedic take on two classic but vastly different tales. Silent Night of the Lambs mixes one part Oscar-winning thriller (The Silence of the Lambs) with one part beloved holiday TV special (Rudolph the Red Nosed Reindeer) to serve up an unforgettably twisted recipe for mayhem and mistletoe.

Will those damn lambs ever stop laughing?!

TICKETS ON SALE NOVEMBER 5th

Sponsored by:



- Rich & Fran Juro - Ben & Mel Teply -



dundee bank

MEMBER FDIC



PICTURE YOUR AD

HERE

OPPORTUNITIES STARTING
AT \$175.

Email Heather at
hhoyt@bluebarn.org

McMillan's Antiques

5002 Leavenworth St.
Omaha, NE 68106

402.556.2522

OMAHA'S NEWEST EVENT RENTAL SPACE!

SARO EVENT LOUNGE

- ✓ A LOUNGE SETTING WITH RELAXED VIBES
- ✓ PERFECT FOR YOUR NEXT PARTY, DINNER, PHOTO SHOOT, & MORE
- ✓ JUST TWO DOORS UP FROM BLUEBARN

LEARN MORE





TICKETS
START AT

\$40



Oct. 4 – Nov. 3, 2024

By **TONY KUSHNER** | Directed by **ALLISON PRICE**



OMAHA
COMMUNITY
PLAYHOUSE

OmahaPlayhouse.com | (402) 553-0800 | 6915 Cass St.

National Theatre Live

FILM  STREAMS™
RUTH SOKOLOF THEATER

*Enjoy the best of British
theatre on the silver screen!
Tickets start at \$10.*



Dear England 2024

► Jul 13 & 17, 2024

Dir. Rupert Goold

Starring Joseph Fiennes



Fleabag 2019

► Sep 14 & 18, 2024

Dir. Vicky Jones

Starring Phoebe Waller-Bridge



Frankenstein 2011

► Oct 26 & 30, 2024

Dir. Danny Boyle

Starring Benedict Cumberbatch
& Jonny Lee Miller



Hamlet 2015

► Dec 7 & 11, 2024

Dir. Lyndsey Turner

Starring Benedict Cumberbatch



Vanya 2024

► Feb 8 & 12, 2025

Dir. Sam Yates

Starring Andrew Scott

TICKETS NOW ON SALE AT

FILMSTREAMS.ORG

AMERICAN
MIDWEST **Ballet**



momentum

OUR **BOLD** MENU OF **BRILLIANT** DANCE

OCTOBER 18-20 • HOFF CENTER • AMBALLET.ORG



REALTOR + ANTIQUE
CONNOISSEUR/PURVEYOR



LORI HUBBELL 402.218.7748
REALTOR

4949
Underwood Ave
Omaha, NE

**Better
Homes**
and Company
REAL ESTATE

THE
GOOD LIFE
GROUP

BUY. SELL. INVEST



4002 Hamilton St
Omaha, NE 68131
402-558-9551

North of Cuming St at
40th & Hamilton Streets

info@hargissstrings.com



— GHOST — BROTHERS of Darkland County

Book by Stephen KING
Music & Lyrics: John MELLENCAMP



OCTOBER 17 - 27, 2024

www.bensontheatre.org



MIDLANDS **business journal**

Subscribe to the MBJ

mbj.com/subscribe



**Local Business & Community News
We got you covered.**

**Midlands Business Journal
\$7/month**

A full year of MBJ delivered either digitally, in print or both (52 issues)

**Insider news for the Omaha metro area including the counties of:
Douglas, Sarpy, Pottawattamie & Lancaster via mbj.com**

Unlimited access on any device

Bonus publications including:

Corporate Giving Guide & Event Book, 101 Things to LOVE about the Omaha metro, metroMAGAZINE, 40 Under 40, Book of Lists plus more!

Discounted tickets to MBJ & metroMAGAZINE signature events and more!

94.5FM 97.3FM 104.1FM 106.7FM 97.7HD3 1490AM

BOOMER! *radio*

**DAVE
WINGERT**

**CHUCK
YATES**

**JACK
SWANDA**

**NEIL
NELKIN**



**MUSIC THAT MAKES
YOU FEEL GOOD**

**LIVE &
LOCAL**



Encore at



Cross the Street &
Enjoy a Bottle of
Wine or Champagne

25% off with Playbill!